

GENERAL NOTES:

FLORIDA BUILDING CODE 2020 (7th ed) HVHZ

LARGE MISSILE IMPACT RATED

- 1- CODE: THIS PRODUCT HAS BEEN TESTED AND DESIGNED IN ACCORDANCE WITH THE CURRENT EDITION OF THE FLORIDA BUILDING INCLUDING THE HIGH VELOCITY HURRICANE ZONE (HVHZ).
- 2- DEFINITION: THIS PRODUCT IS AN ALUMINUM SLIDING GLASS DOOR DESIGNED, CONSTRUCTED AND TESTED PROVIDING PROTECTION FROM HURRICANE FORCE WINDS AND WIND BORNE DEBRIS (LARGE MISSILE) WITHIN THE ALLOWABLE DESIGNED PRESSURES AND LIMITATIONS STATED IN THIS APPROVAL. INSTALLATION OF HURRICANE PROTECTION DEVICES IS NOT REQUIRED.
- 3- POSTING: PRODUCT SHALL BE LABELED AS PER CURRENT FLORIDA BUILDING CODE CHAPTER 17.

"JUPITER GLASS SPECIALTIES, INC DBA  
SOUTHEASTERN DOOR COMPANY - JUPITER - FLORIDA  
SERIES ATLAS HP SLIDING GLASS DOOR  
LARGE MISSILE IMPACT RATED  
MIAMI-DADE PRODUCT CONTROL APPROVED

- 4- LOADS: DESIGNED LOAD CALCULATED BASED ON THE ASCE 7-10 AND PROVIDED BY A PROFESSIONAL ARCHITECT OR ENGINEER FOR EACH SPECIFIC PROJECT. THE CALCULATED DESIGNED PRESSURE MUST NOT EXCEED THE ALLOWABLE PRESSURES HERE IN SPECIFIED. THE DESIGN PRESSURES, AS DETERMINED FROM ASCE 7-16, ARE PERMITTED TO BE MULTIPLE BY 0.6
- 5- MATERIAL: ALL ALUMINUM PARTS TO BE 6063-T6 ALLOY OR AS NOTED AND GLAZING TO BE LAMINATED IMPACT GLASS AS SPECIFIED ON THIS APPROVAL.
- 6- FASTENERS: ASSEMBLY SCREWS AND ANCHORS SHALL BE AS SPECIFIED IN THE CURRENT SET OF DRAWINGS. INSTALLATION AND LOADS AS PER THIS APPROVAL. ANCHOR SPACING AND LOADS MUST NOT EXCEED THE MAXIMUM LIMITS SPECIFIED BY THIS APPROVAL.
- 7- USE: IT SHALL BE THE RESPONSIBILITY OF THE CONTRACTOR, ARCHITECT OR ENGINEER OF RECORD TO VERIFY THE FOLLOWING:
- 7.1- THE STABILITY OF THE STRUCTURE WHERE THE PRODUCT IS TO BE ATTACHED INSURING PROPER ANCHORAGE.
- 7.2- THE SITE SPECIFIC PROJECT CRITERIA, SUCH AS BUT NOT LIMITED TO, LOCAL CODE REQUIREMENTS, DESIGNED PRESSURES ETC.
- 7.3- THAT THIS APPROVAL IS ADEQUATE TO THE SPECIFIC PROJECT.
- 8- DISSIMILAR MATERIALS: WHERE ALUMINUM IS IN CONTACT OR FASTENED TO DISSIMILAR MATERIALS, INCLUDING BUT NOT LIMITED TO STEEL, INSTALLATION SHALL MEET THE REQUIREMENTS OF THE CURRENT FBC.

DOOR UNIT SELECTION PROCEDURE AND INSTRUCTIONS TO USE THIS DRAWING TO VERIFY DOOR ADEQUACY PRESSURE

STEP 1 - SHEET 1 GENERAL NOTE 4: DETERMINE PROJECT DESIGNED PRESSURE (DP) AS INDICATED.

STEP 2 - SHEET 1: COMPARE (DP) WITH PRODUCT DESIGN RATING, FUNCTION OF DOOR SIZES FW x FH AND POSITIVE PRESSURE OF THRESHOLD RISER

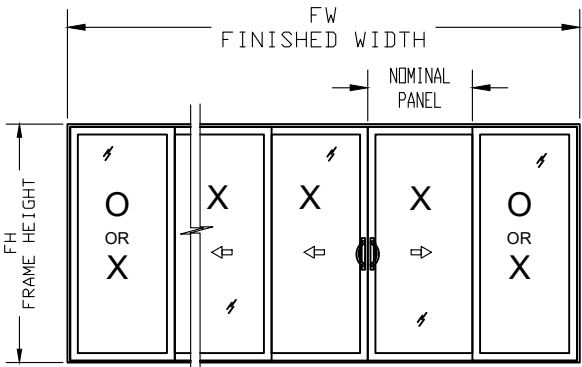
STEP 3 - SHEET 5, 6 & 7: SELECT FRAME ANCHORING IN ACCORDANCE WITH 2, 3, 4 OR 5 TRACK SELECTION.

STEP 4 - THE PRODUCT DESIGNED RATING MUST BE EQUAL OR GREATER THAN THE CALCULATED PROJECT WIND PRESSURE (PD)

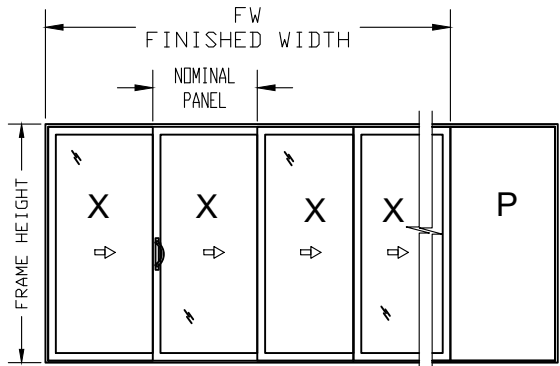
TABLE OF CONTENTS:

SHEET	DESCRIPTION
1	GENERAL NOTES, PRODUCT DESIGN RATING AND QUALIFICATIONS
2	DOOR SAMPLE ELEVATIONS WITH FIXED AND OPERABLE PANELS AND POCKET CONFIGURATION
3	TYPICAL ELEVATION WITH CROSS SECTIONS LOCATOR
4	DOOR SECTIONS DETAILS
5	JAMB FRAMING ANCHORAGE DETAILS
6	HEADER FRAMING ANCHORAGE DETAILS
7	SILL FRAMING ANCHORAGE DETAILS
8	FRAMING DIE COMPONENTS
9	PANEL DIE COMPONENTS, GLAZING CONFIGURATIONS
10	PANEL HARDWARE
11	LIST OF COMPONENTS

PRODUCT DESIGN RATING AND QUALIFICATIONS



NOMINAL PANEL = FW / # OF PANELS



NOMINAL PANEL = FW / # OF PANELS  
NOTE: POCKET IS NOT TO BE INCLUDED IN THE FW

DESIGN PRESSURE RATING	IMPACT RATING	PANEL SIZES	MAX. FW X FH
+65 PSF -75 PSF	LARGE MISSILE IMPACT	52" X 101 1/4" NOMINAL MODULE	312" X 102 1/2"
±50 PSF	LARGE MISSILE IMPACT	48" X 118.75" NOMINAL MODULE	288" X 120"

POSITIVE (EXTERIOR) DP SELECTION

THRESHOLD RISER TYPE	MAXIMUM PRESSURES (PSF)	
	CASE 1	CASE 2
3-1/4"	+65	+65
2"	+65	+50
13/16"	+65	--

- NOTES:
- 1- CASE 1: MAXIMUM POSITIVE PRESSURES FOR 3-1/4", 2" OR 13/16" THRESHOLD WITH OVERHANG AS PER ILLUSTRATION "Z".
- 2- CASE 2: MAXIMUM POSITIVE PRESSURES FOR 3-1/4" AND 2" THRESHOLD RISER W/OUT THE OVERHANG.
- 3- THE POSITIVE PRESSURE SHALL BE THE LESSER VALUE FROM THE ABOVE TABLE

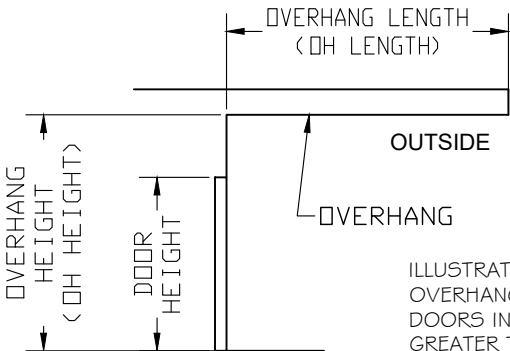


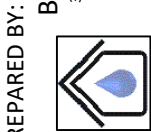
ILLUSTRATION "Z"  
OVERHANG IN COMPLIANCE WITH THE FBC REQUIREMENTS. DOORS INSTALLED WHERE THE OVERHANG (OH) RATIO IS GREATER TO OR MORE THAN 1 NEED NOT TO BE TESTED FOR WATER INFILTRATION. THE OH RATIO SHALL BE CALCULATED BY THE FOLLOWING EQUATION  
OH RATIO = OH LENGTH / OH HEIGHT >= 1.0



SOUTHEASTERN DOOR COMPANY

1505 COMMERCE LANE  
JUPITER, FL 33458  
PH: (561) 746-5493

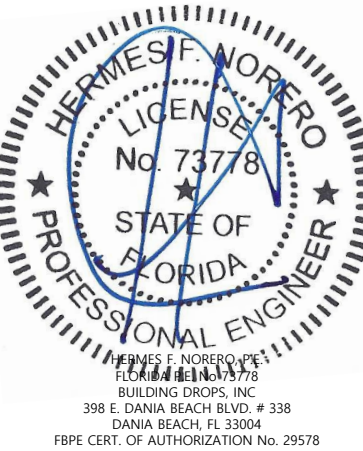
TITLE:  
SERIES "ATLAS HP"  
(LARGE MISSILE IMPACT)  
GENERAL NOTES, PRODUCT DESIGN  
RATING AND QUALIFICATIONS



PREPARED BY:  
BUILDING DROPS, INC.  
398 E. DANIA BEACH BLVD., STE. 338  
DANIA BEACH, FL 33004  
PH: (954) 399-8478  
FAX: (954) 744-4738  
WEB: www.buildingdrops.com

REMARKS	BY	DATE
CODE CHANGE 2020	YC	12/20

THE INSTALLATION DETAILS DESCRIBED HERE IN ARE GENERIC AND MAY NOT REFLECT ACTUAL CONDITIONS FOR A SPECIFIC SITE. IF SITE CONDITIONS CAUSE INSTALLATION TO DEVIATE FROM THE REQUIREMENTS DETAILED HEREIN, A LICENSED ENGINEER OR ARCHITECT SHALL PREPARE SITE SPECIFIC DOCUMENTS FOR USE WITH THIS DOCUMENT.



FL #:

FL16271

DATE: 08.02.18

DWG. BY: HR  
CHK. BY: HFN

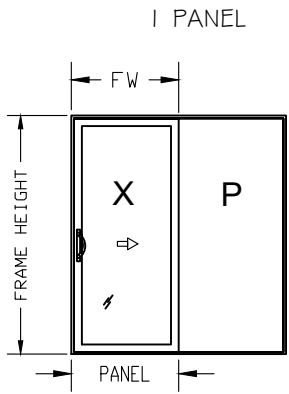
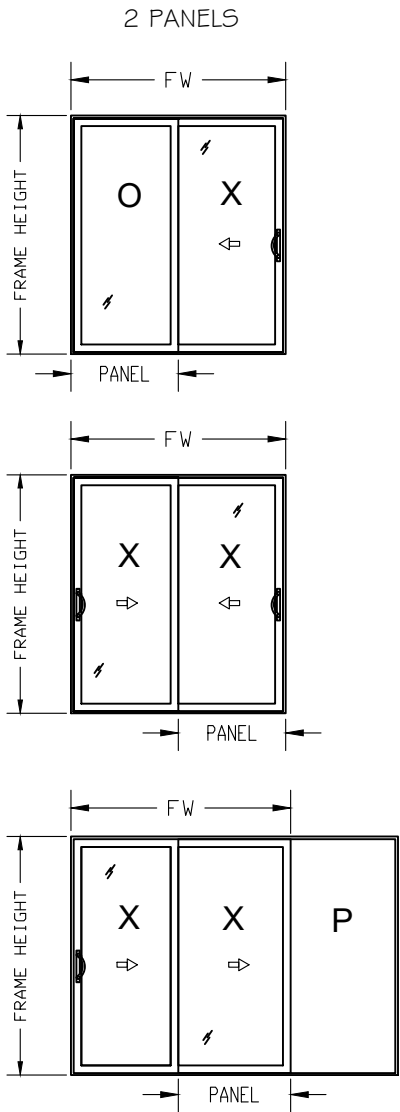
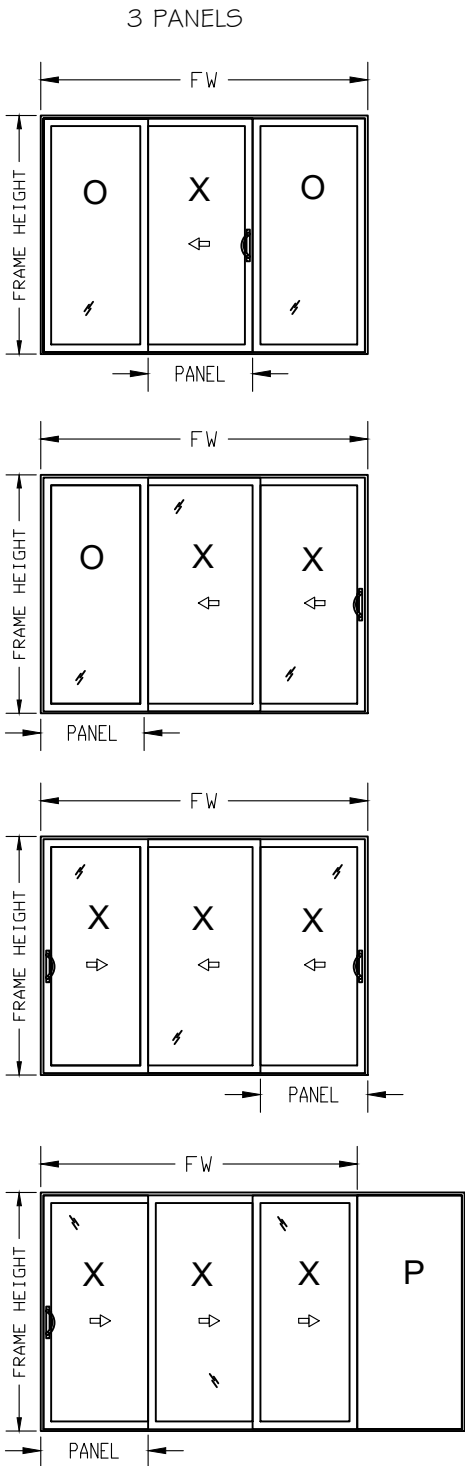
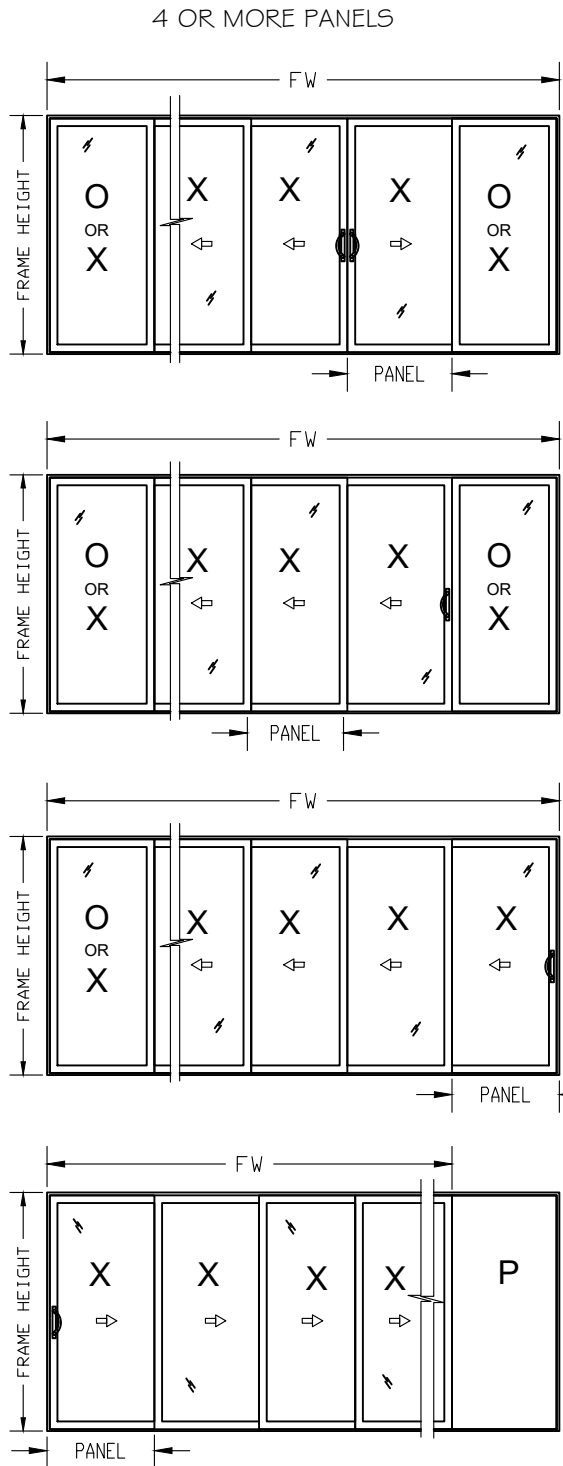
SCALE: NTS

DWG. #: SDC003

SHEET:

1

DOORS SAMPLE ELEVATIONS WITH OPERABLE AND FIXED PANELS AND POCKET CONFIGURATIONS



P- POCKET  
X- OPERABLE PANEL  
O- FIXED PANEL

DOOR CAN BE CONFIGURED WITH AS MANY PANELS AS THE TWO, THREE, FOUR OR FIVE TRACK SYSTEM CAN FIT, LIMITED TO THE MAXIMUM TESTED FRAME WIDTH.

MAXIMUM DLO= 46 5/8" X 94 1/16" FOR 52" X 102 1/2" NOMINAL PANELS  
MAXIMUM DLO= 42 5/8" X 111 9/16" FOR 48" X 120" NOMINAL PANELS



SOUTHEASTERN DOOR COMPANY

1505 COMMERCE LANE  
JUPITER, FL 33458  
PH: (561) 746-5493

TITLE: **SERIES "ATLAS HP"**  
**(LARGE MISSILE IMPACT)**  
DOOR SAMPLE ELEVATIONS WITH  
FIXED AND OPERABLE PANELS AND  
POCKET CONFIGURATION

PREPARED BY: **BUILDING DROPS, INC.**  
398 E. DANIA BEACH BLVD., STE. 338  
DANIA BEACH, FL 33004  
PH: (954) 399-8478  
FAX: (954) 744-4738  
WEB: www.buildingdrops.com

REMARKS	BY	DATE
CODE CHANGE 2020	YC	12/20

THE INSTALLATION DETAILS DESCRIBED HERE IN ARE GENERIC AND MAY NOT REFLECT ACTUAL CONDITIONS FOR A SPECIFIC SITE. IF SITE CONDITIONS CAUSE INSTALLATION TO DEVIATE FROM THE REQUIREMENTS DETAILED HEREIN, A LICENSED ENGINEER OR ARCHITECT SHALL PREPARE SITE SPECIFIC DOCUMENTS FOR USE WITH THIS DOCUMENT.

HERMES F. NORERO  
LICENSED PROFESSIONAL ENGINEER  
No. 73778  
STATE OF FLORIDA  
FLORIDA ENGINEERING BOARD  
HERMES F. NORERO, P.E.  
FLORIDA LICENSE NO. 73778  
BUILDING DROPS, INC.  
398 E. DANIA BEACH BLVD. # 338  
DANIA BEACH, FL 33004  
FBPE CERT. OF AUTHORIZATION No. 29578

FL #: **FL16271**

DATE: **08.02.18**

DWG. BY: **HR**      CHK. BY: **HFN**

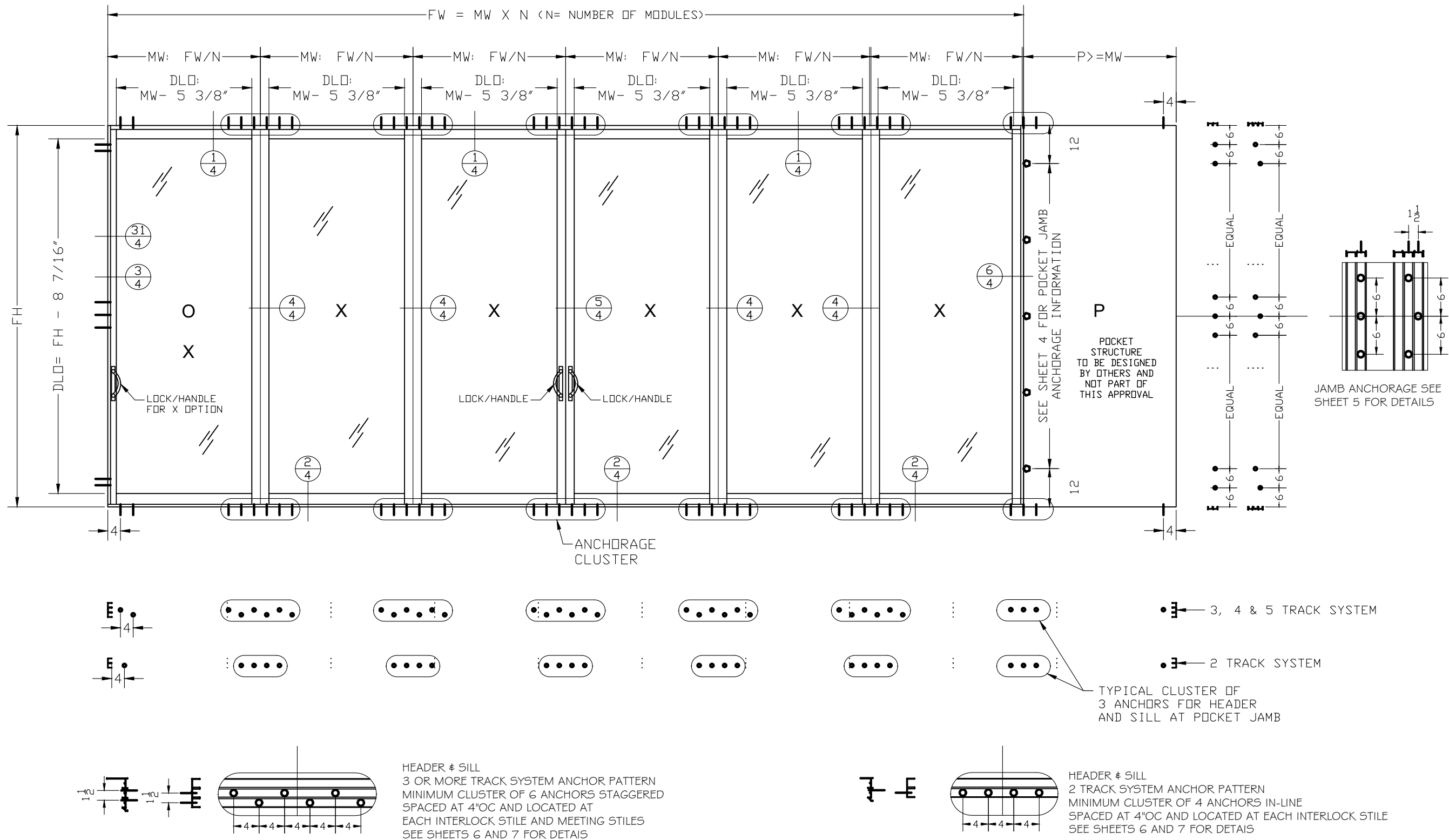
SCALE: **NTS**

DWG. #: **SDC003**

SHEET: **2**

OF 11

TYPICAL ELEVATION AND CROSS SECTION LOCATOR



SOUTHEASTERN DOOR COMPANY

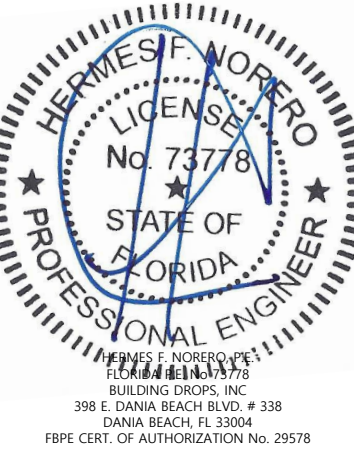
1505 COMMERCE LANE  
JUPITER, FL 33458  
PH: (561) 746-5493

TITLE:  
SERIES "ATLAS HP"  
(LARGE MISSILE IMPACT)  
TYPICAL ELEVATION WITH  
CROSS SECTIONS LOCATOR

PREPARED BY:  
BUILDING DROPS, INC.  
398 E. DANIA BEACH BLVD., STE. 338  
DANIA BEACH, FL 33004  
PH: (954) 399-8478  
FAX: (954) 744-4738  
WEB: www.buildingdrops.com

REMARKS	BY	DATE
CODE CHANGE 2020	YC	12/20

THE INSTALLATION DETAILS DESCRIBED HEREIN ARE GENERIC AND MAY NOT REFLECT ACTUAL CONDITIONS FOR A SPECIFIC SITE. IF SITE CONDITIONS CAUSE INSTALLATION TO DEVIATE FROM THE REQUIREMENTS DETAILED HEREIN, A LICENSED ENGINEER OR ARCHITECT SHALL PREPARE SITE SPECIFIC DOCUMENTS FOR USE WITH THIS DOCUMENT.



FL #:	FL16271
DATE:	08.02.18
DWG. BY:	HR
CHK. BY:	HFN
SCALE:	NTS
DWG. #:	SDC003
SHEET:	3



s:\projects\southeastern door company\cc-20-0506 - fbc submittal 2020 (version 7) code change for southeastern door company\dwgs\ssdc003.dwg  
12/7/2020 11:28 AM



**SOUTHEASTERN DOOR COMPANY**

1505 COMMERCE LANE  
JUPITER, FL 33458  
PH: (561) 746-5493

TITLE:  
**SERIES "ATLAS HP"  
(LARGE MISSILE IMPACT)**

DOOR SECTION  
DETAILS

PREPARED BY:  
**BUILDING DROPS, INC.**  
398 E. DANIA BEACH BLVD., STE. 338  
DANIA BEACH, FL 33004  
PH: (954) 399-8478  
FAX: (954) 744-4738  
WEB: www.buildingdrops.com



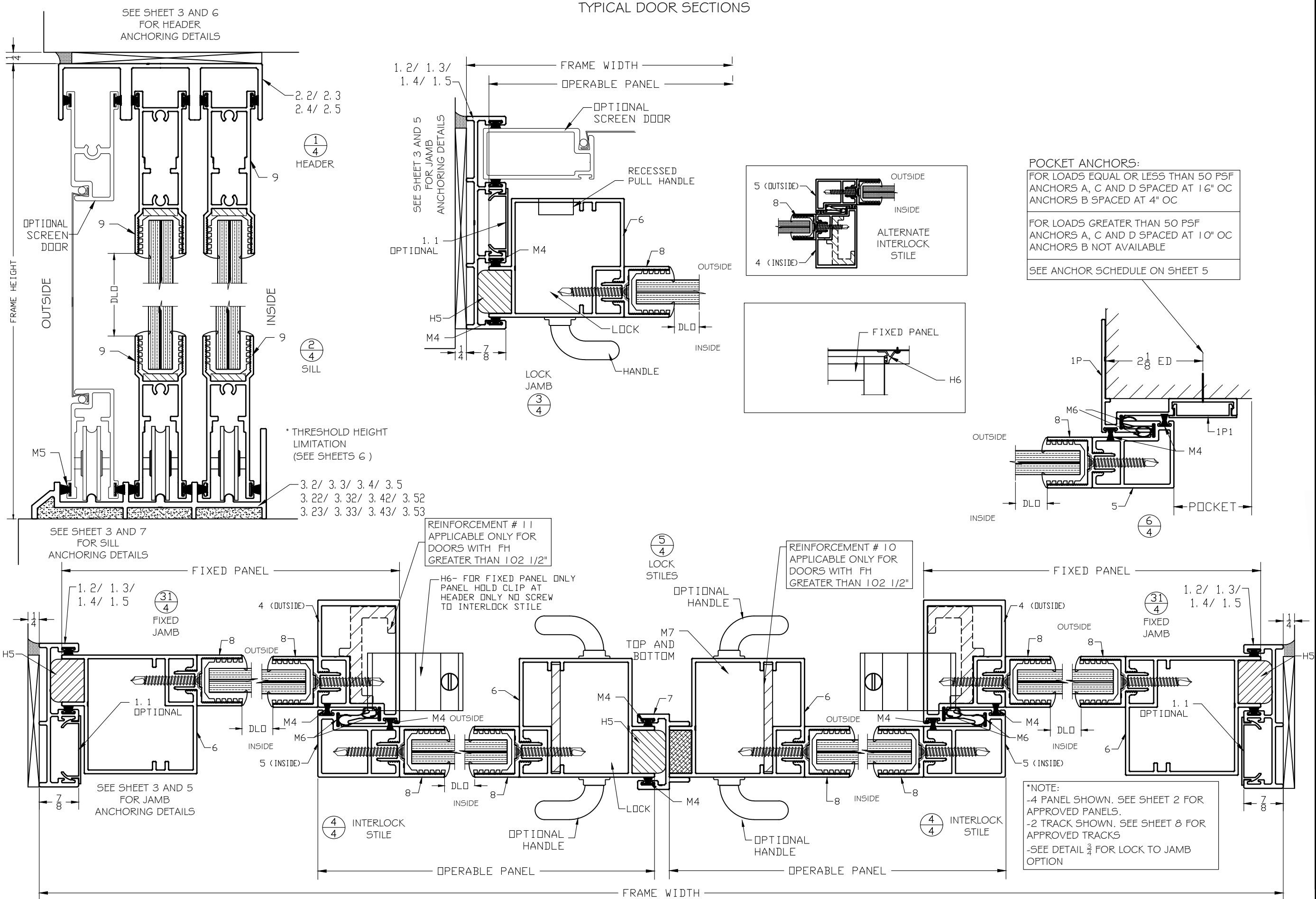
REMARKS	BY	DATE
CODE CHANGE 2020	YC	12/20

THE INSTALLATION DETAILS DESCRIBED HEREIN ARE GENERIC AND MAY NOT REFLECT ACTUAL CONDITIONS FOR A SPECIFIC SITE. IF SITE CONDITIONS CAUSE INSTALLATION TO DEVIATE FROM THE REQUIREMENTS DETAILED HEREIN, A LICENSED ENGINEER OR ARCHITECT SHALL PREPARE SITE SPECIFIC DOCUMENTS FOR USE WITH THIS DOCUMENT.

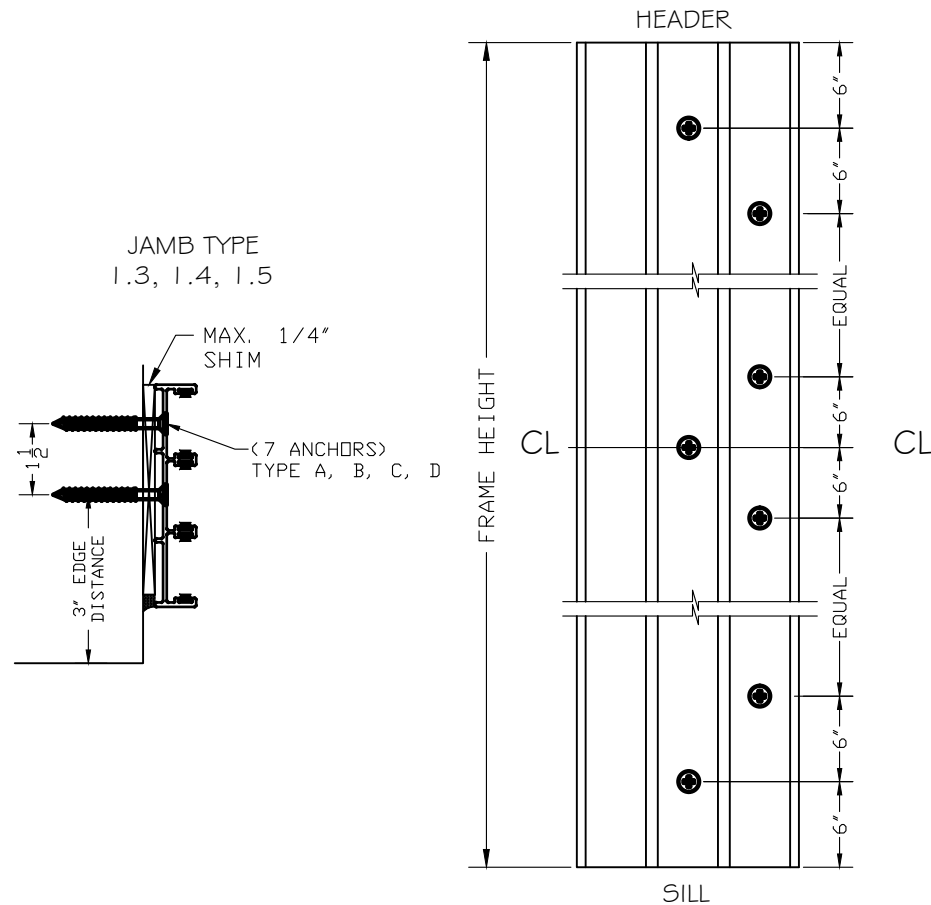


FL #:	<b>FL16271</b>
DATE:	<b>08.02.18</b>
DWG. BY:	<b>HR</b>
CHK. BY:	<b>HFN</b>
SCALE:	<b>NTS</b>
DWG. #:	<b>SDC003</b>
SHEET:	<b>4</b>

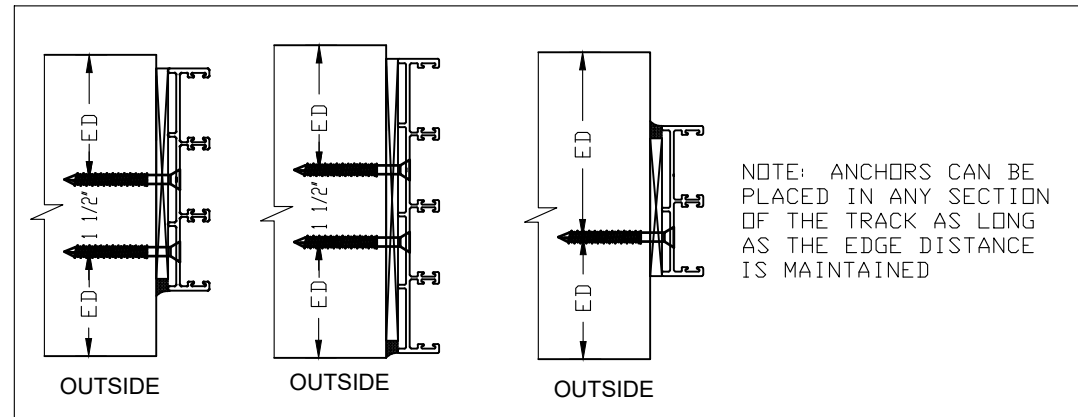
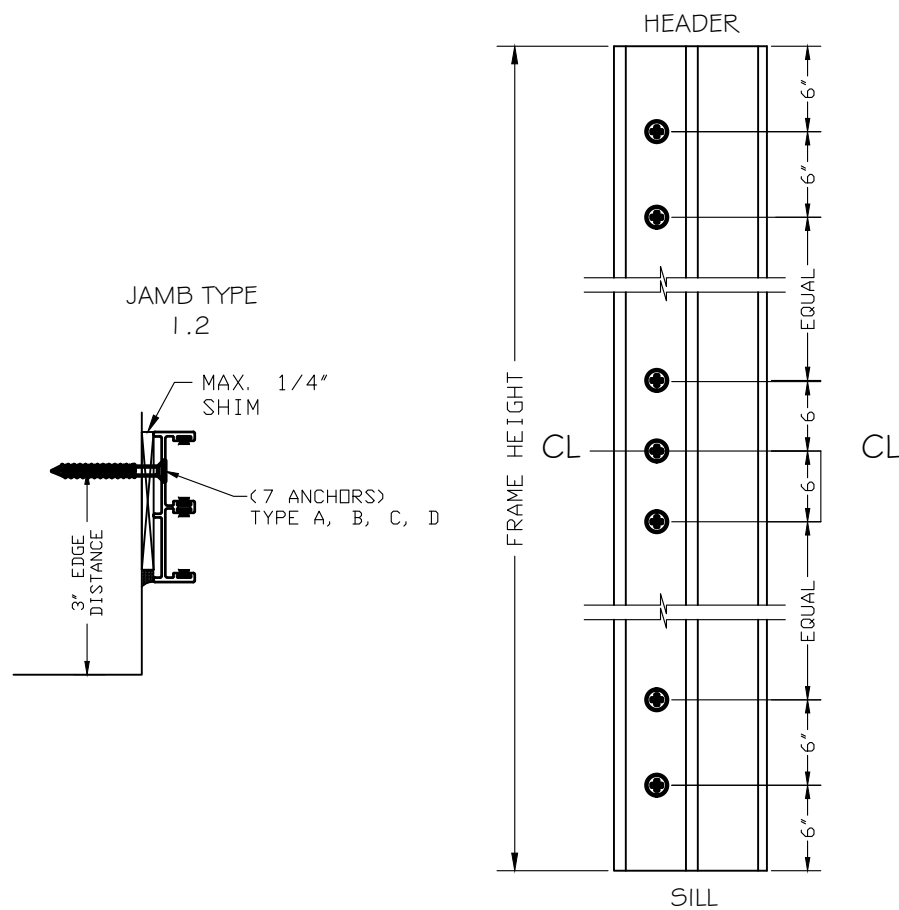
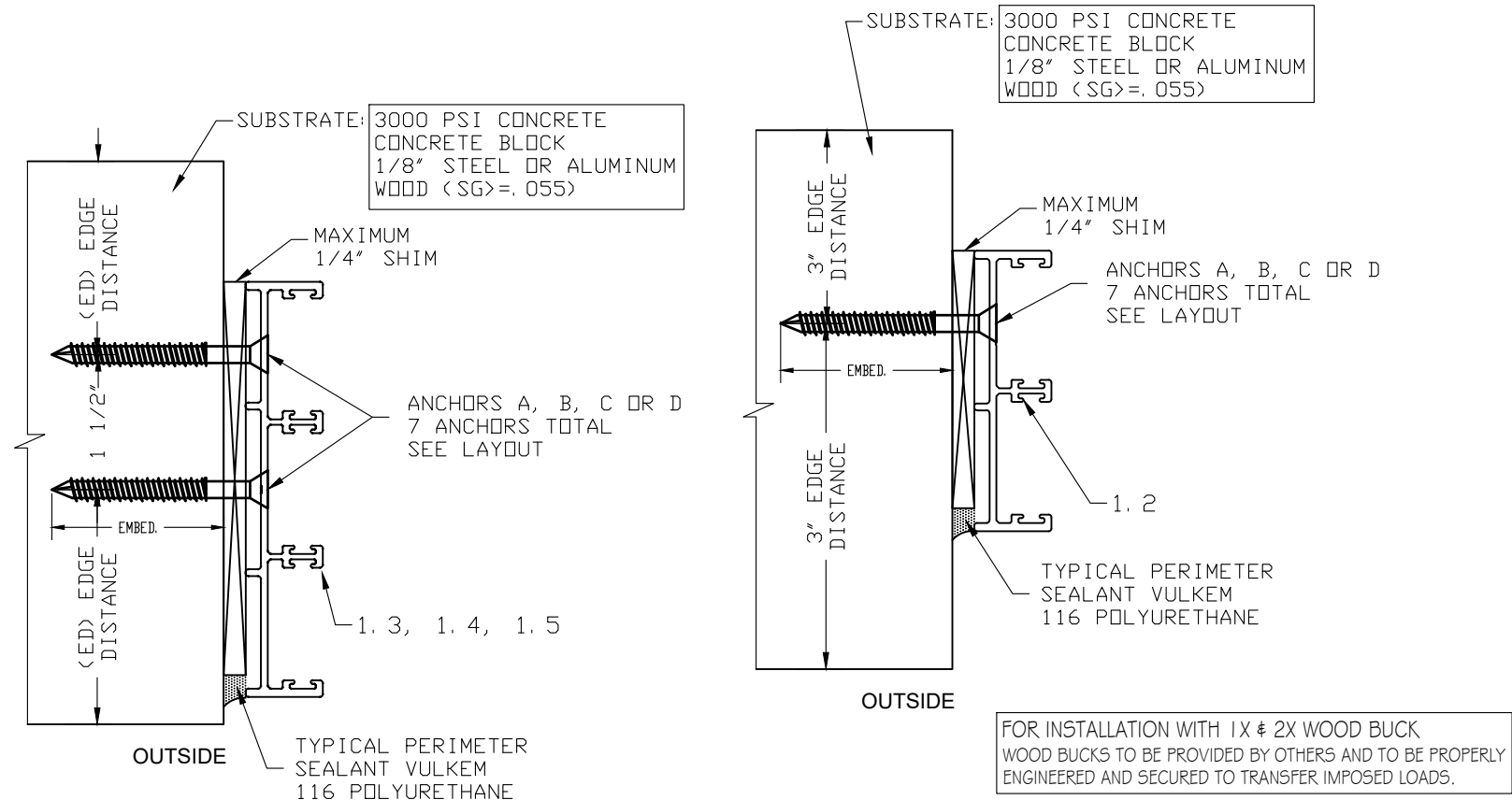
**TYPICAL DOOR SECTIONS**



s:\projects\southeastern door company\cc-20-0506 - fbc submittal 2020 (version 7) code change for southeastern door company\dwgs\ssdc03.dwg  
12/7/2020 11:28 AM



## JAMB FRAMING ANCHORAGE DETAILS



### ANCHOR SCHEDULE

TYPE	DESCRIPTION	EMBEDMENT	SUBSTRATE	EDGE DISTANCE
A	1/4" TAPCON BY ITW	1 3/4" MIN.	3000 psi CONCRETE	3"
B	1/4" TAPCON BY ITW	1 1/4" MIN.	MASONRY BLOCK	3"
C	1/4" TAPCON BY ITW	1 1/2" MIN.	PT WOOD (SG=.55)	3/4"
D	1/4-14 GR 5 SMS	MIN. 3 THREADS	METAL STRUCTURES	3/4"

### NOTES:

- 1- MINIMUM EMBEDMENT ARE BEYOND WALL DRESSING.
- 2- METAL STRUCTURES ARE TO BE ASTM A36 STEEL OR 6063-T6 ALUMINUM
- 3- ANCHOR TYPE D MUST HAVE A MINIMUM 3 THREADS EMBEDMENT PASS SUBSTRATE
- 4- CONCRETE MASONRY UNITS SHALL CONFORM TO ASTM C-90 WITH MINIMUM 2000 PSI
- 5- ANCHORS A, B AND C: YIELD STRENGTH  $F_y = 100$  KSI, ULTIMATE STRENGTH  $F_u = 125$  KSI
- 6- ANCHORS D: YIELD STRENGTH  $F_y = 92$  KSI, ULTIMATE STRENGTH  $F_u = 120$  KSI

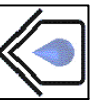


## SOUTHEASTERN DOOR COMPANY

1505 COMMERCE LANE  
JUPITER, FL 33458  
PH: (561) 746-5493

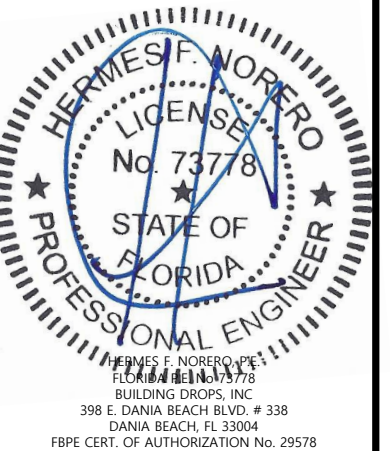
TITLE:  
SERIES "ATLAS HP"  
(LARGE MISSILE IMPACT)  
JAMB FRAMING ANCHOR  
DETAILS

PREPARED BY:  
BUILDING DROPS, INC.  
398 E. DANIA BEACH BLVD., STE. 338  
DANIA BEACH, FL 33004  
PH: (954) 399-8478  
FAX: (954) 744-4738  
WEB: www.buildingdrops.com



REMARKS	BY	DATE
CODE CHANGE 2020	YC	12/20

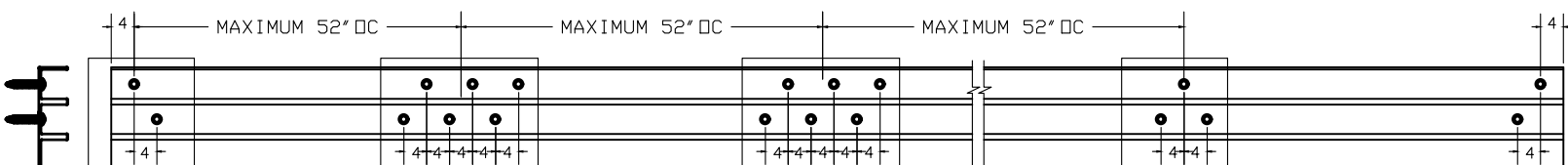
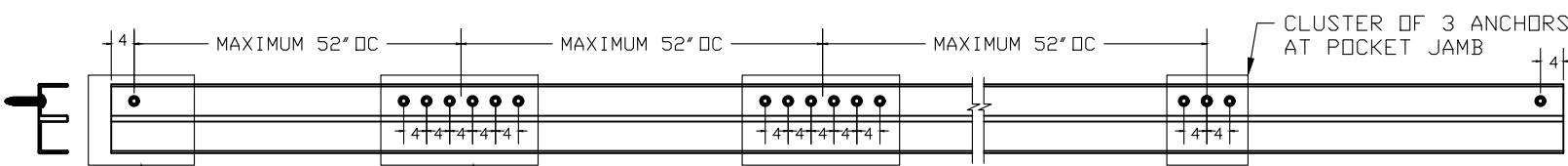
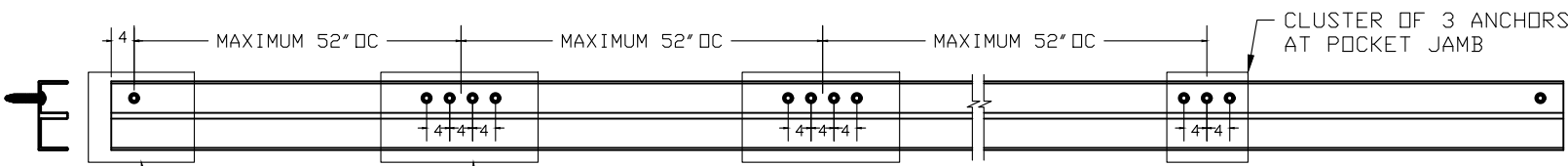
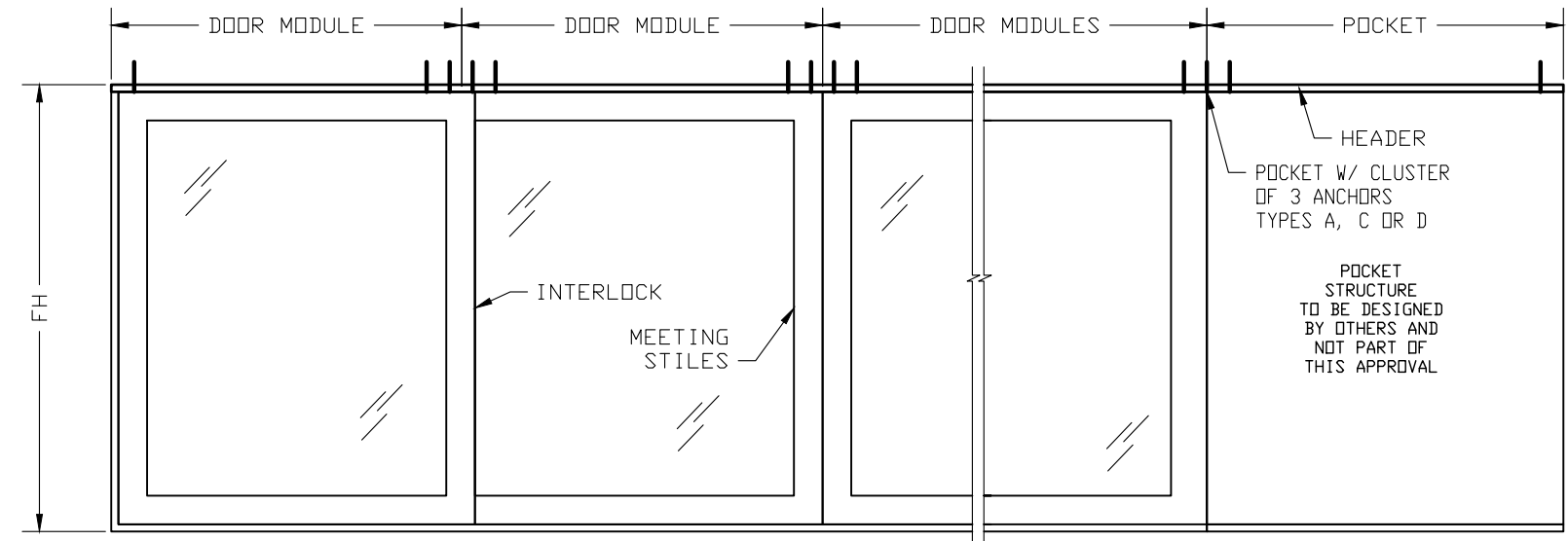
THE INSTALLATION DETAILS DESCRIBED HERE IN ARE GENERIC AND MAY NOT REFLECT ACTUAL CONDITIONS FOR A SPECIFIC SITE. IF SITE CONDITIONS CAUSE INSTALLATION TO DEVIATE FROM THE REQUIREMENTS DETAILED HEREIN, A LICENSED ENGINEER OR ARCHITECT SHALL PREPARE SITE SPECIFIC DOCUMENTS FOR USE WITH THIS DOCUMENT.



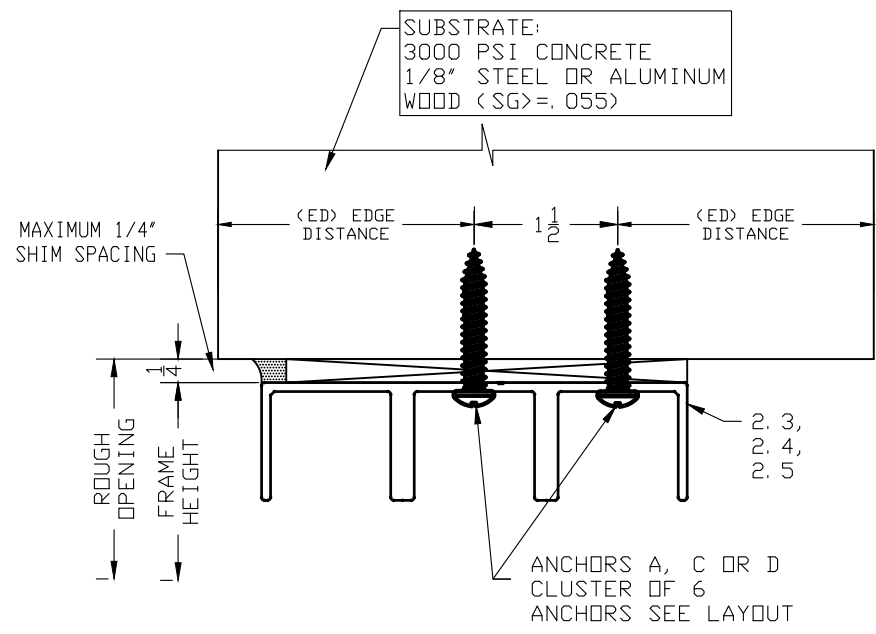
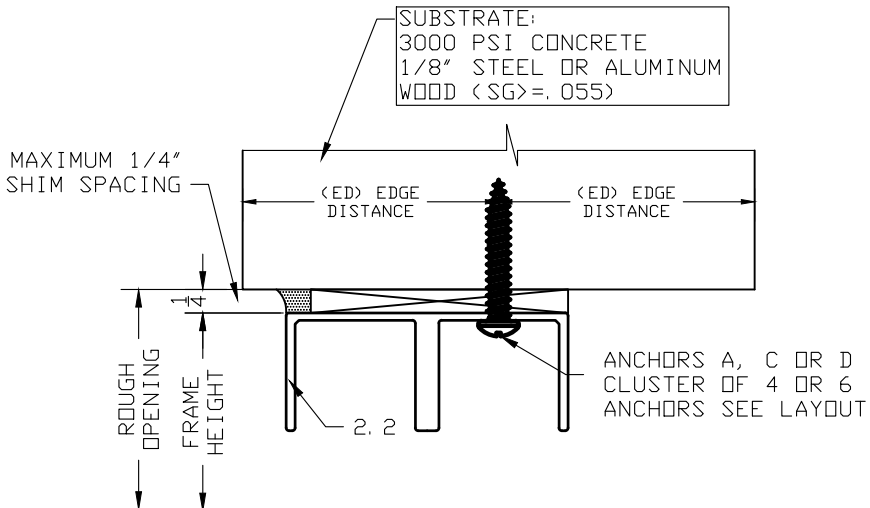
FL #:	FL16271
DATE:	08.02.18
DWG. BY:	HR
CHK. BY:	HFN
SCALE:	NTS
DWG. #:	SDC003
SHEET:	5

s:\projects\southeastern door company\cc-20-0506 - fbc submittal 2020 (version 7) code change for southeastern door company\dwgs\ssdc03.dwg  
12/7/2020 11:28 AM

HEADER FRAMING ANCHORAGE DETAILS



NOTE: ANCHORS CAN BE PLACED IN ANY SECTION OF THE TRACK AS LONG AS THE EDGE DISTANCE IS MAINTAINED



FOR INSTALLATION WITH 1X & 2X WOOD BUCK  
WOOD BUCKS TO BE PROVIDED BY OTHERS AND TO BE PROPERLY  
ENGINEERED AND SECURED TO TRANSFER IMPOSED LOADS.

3, 4 AND 5  
TRACK SYSTEMS  
ANCHORS TYPE  
A, C OR D

ANCHOR SCHEDULE

TYPE	DESCRIPTION	EMBEDMENT	SUBSTRATE	ED
A	1/4" TAPCON BY ITW	1 3/4" MIN.	3000 psi CONCRETE	3"
C	1/4" TAPCON BY ITW	1 1/2" MIN.	PT WOOD (SG=.55)	3/4"
D	1/4-14 GR 5 SMS	MIN. 3 THREADS	METAL STRUCTURES	3/4"

- NOTES:  
1- MINIMUM EMBEDMENT ARE BEYOND WALL DRESSING.  
2- METAL STRUCTURES ARE TO BE ASTM A36 STEEL OR 6063-T6 ALUMINUM  
3- ANCHOR TYPE D MUST HAVE A MINIMUM 3 THREADS EMBEDMENT PASS SUBSTRATE  
4- ANCHORS A AND C: YIELD STRENGTH Fy= 100 KSI, ULTIMATE STRENGTH Fu= 125 KSI  
5- ANCHORS D: YIELD STRENGTH Fy=92 KSI, ULTIMATE STRENGTH Fu= 120 KSI



SOUTHEASTERN DOOR COMPANY

1505 COMMERCE LANE  
JUPITER, FL 33458  
PH: (561) 746-5493

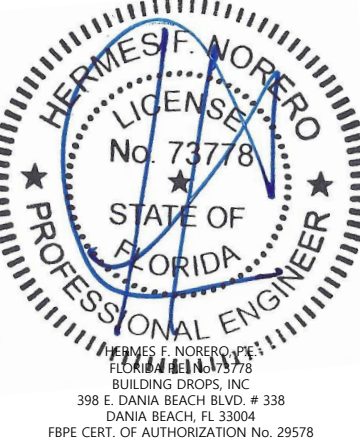
TITLE:  
SERIES "ATLAS HP"  
(LARGE MISSILE IMPACT)  
HEADER FRAMING ANCHOR  
DETAILS

PREPARED BY:  
BUILDING DROPS, INC.  
398 E. DANIA BEACH BLVD., STE. 338  
DANIA BEACH, FL 33004  
PH: (954) 399-8478  
FAX: (954) 744-4738  
WEB: www.buildingdrops.com



REMARKS	BY	DATE
CODE CHANGE 2020	YC	12/20

THE INSTALLATION DETAILS DESCRIBED HERE IN ARE GENERIC  
AND MAY NOT REFLECT ACTUAL CONDITIONS FOR A SPECIFIC  
SITE. IF SITE CONDITIONS CAUSE INSTALLATION TO DEVIATE  
FROM THE REQUIREMENTS DETAILED HEREIN, A LICENSED  
ENGINEER OR ARCHITECT SHALL PREPARE SITE SPECIFIC  
DOCUMENTS FOR USE WITH THIS DOCUMENT.



FL #: **FL16271**

DATE: **08.02.18**

DWG. BY: **HR** CHK. BY: **HFN**

SCALE: **NTS**

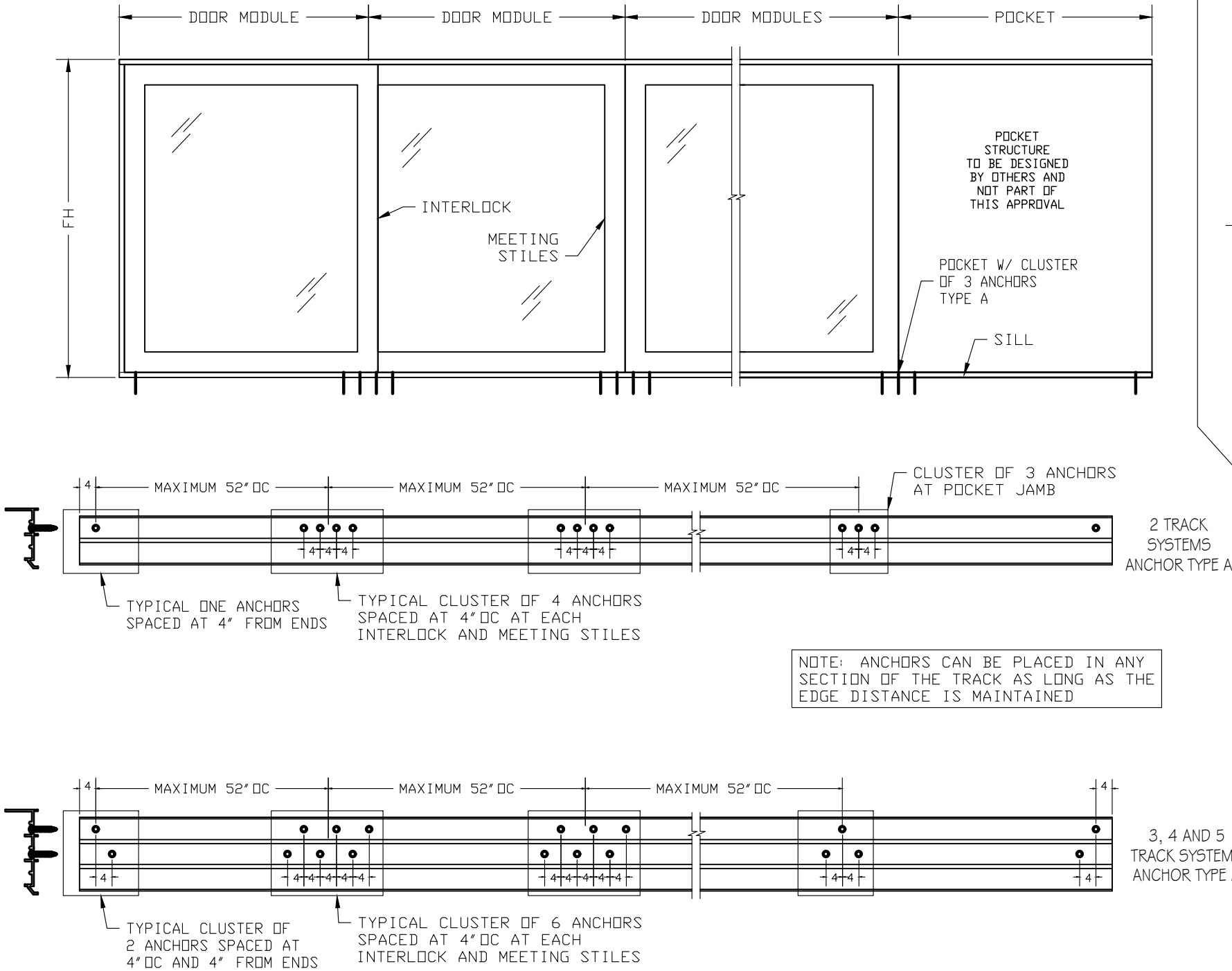
DWG. #: **SDC003**

SHEET: **6**



s:\projects\southeastern door company\cc-20-0506 - fbc submittal 2020 (version 7) code change for southeastern door company\dwgs\ssdc003.dwg  
12/7/2020 11:28 AM

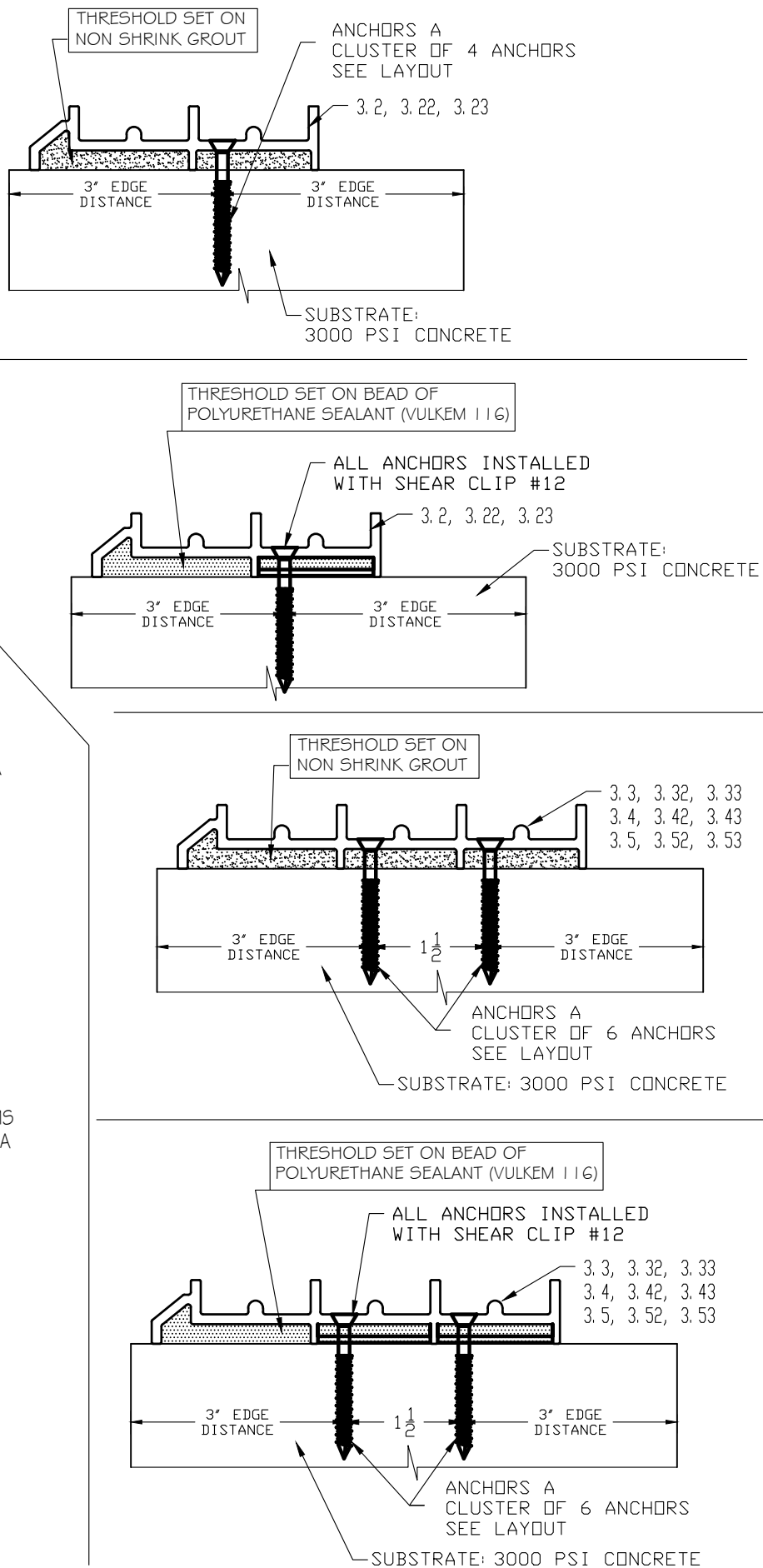
SILL FRAMING ANCHORAGE DETAILS



ANCHOR SCHEDULE

TYPE	DESCRIPTION	EMBEDMENT	SUBSTRATE	ED
A	1/4" TAPCON BY ITW	1 3/4" MIN.	3000 psi CONCRETE	3"

- NOTES:
- 1- MINIMUM EMBEDMENT ARE BEYOND WALL DRESSING.
  - 2- ANCHORS A: YIELD STRENGTH  $F_y = 100$  KSI, ULTIMATE STRENGTH  $F_u = 125$  KSI



SOUTHEASTERN DOOR COMPANY

1505 COMMERCE LANE  
JUPITER, FL 33458  
PH: (561) 746-5493

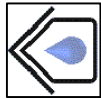
TITLE:  
SERIES "ATLAS HP"  
(LARGE MISSILE IMPACT)

SILL FRAMING ANCHOR  
DETAILS

PREPARED BY:

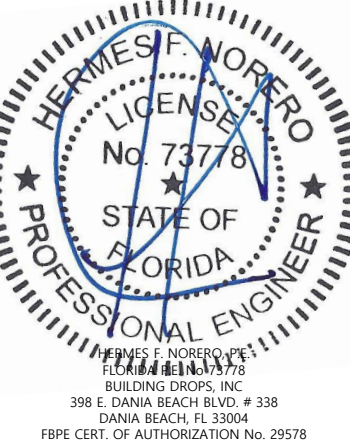
BUILDING DROPS, INC.

398 E. DANIA BEACH BLVD., STE. 338  
DANIA BEACH, FL 33004  
PH: (954) 399-8478  
FAX: (954) 744-4738  
WEB: www.buildingdrops.com



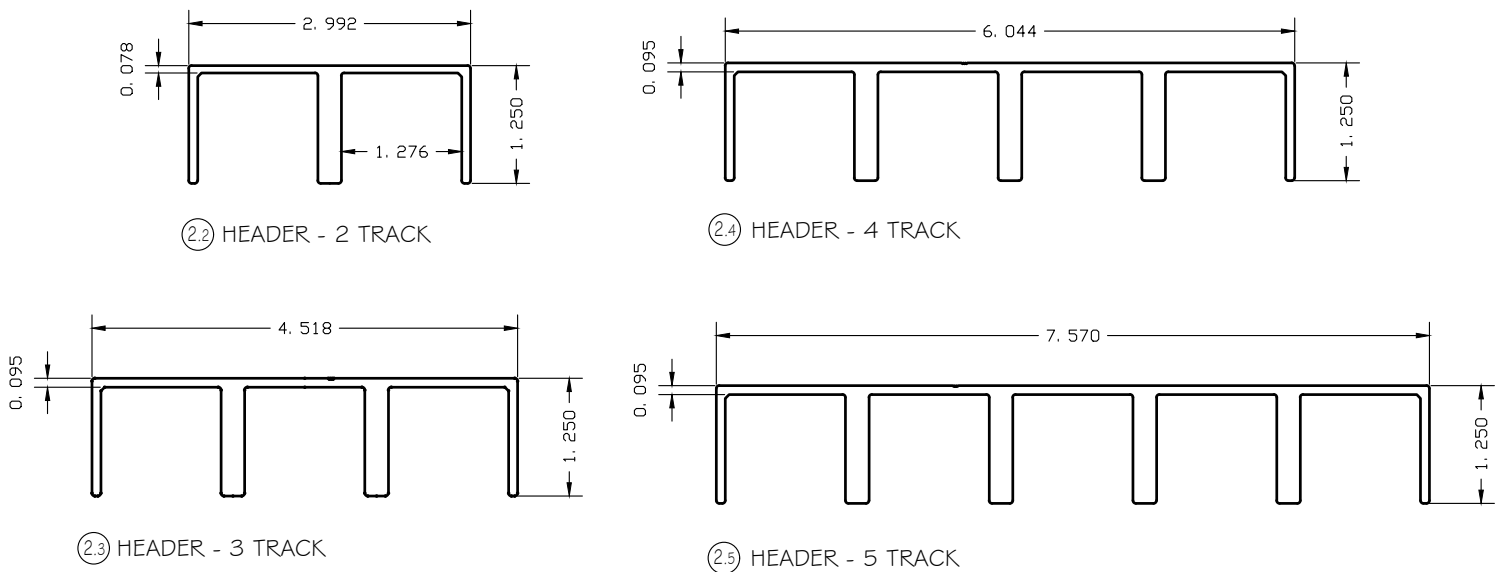
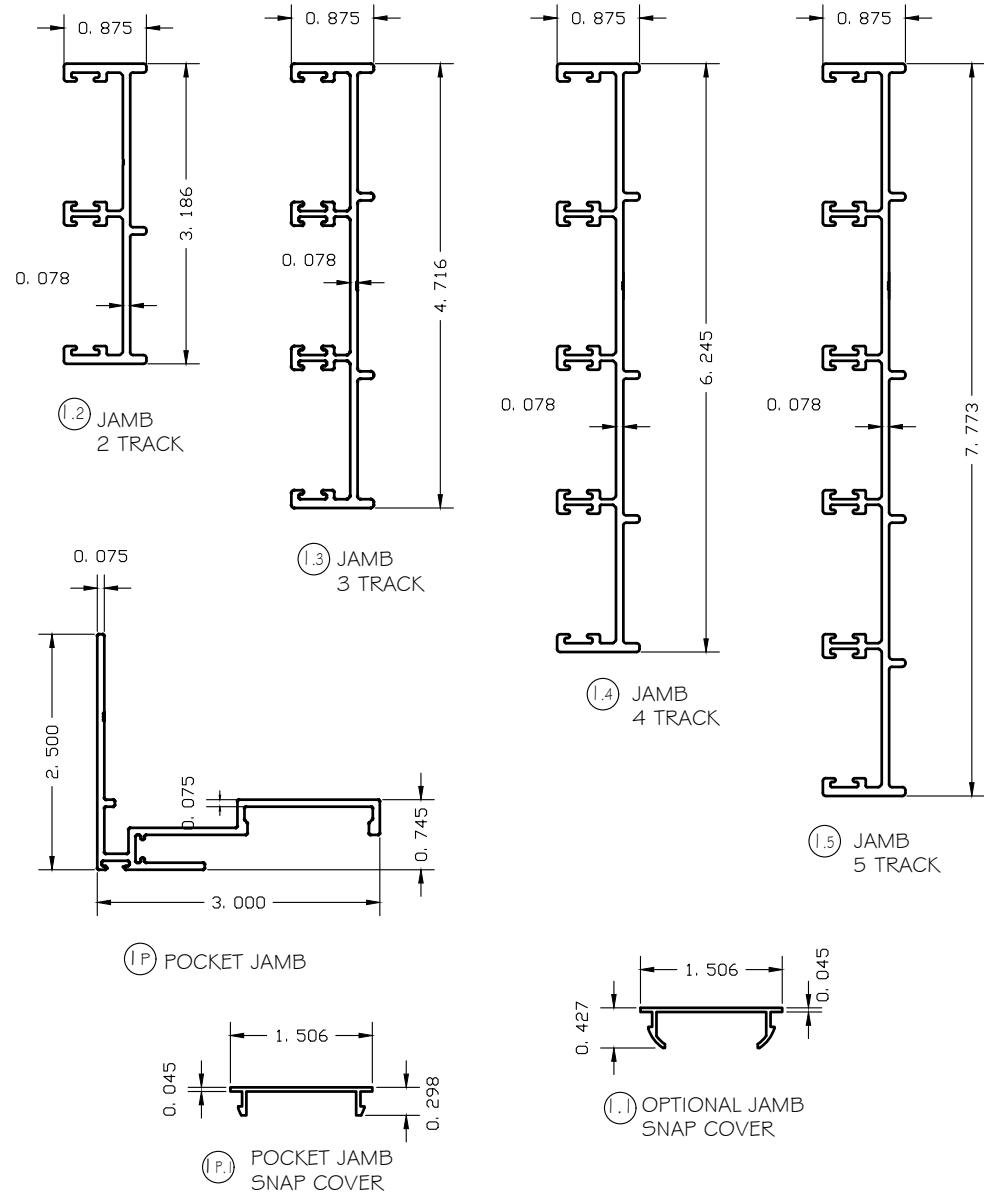
REMARKS	BY	DATE
CODE CHANGE 2020	YC	12/20

THE INSTALLATION DETAILS DESCRIBED HERE IN ARE GENERIC AND MAY NOT REFLECT ACTUAL CONDITIONS FOR A SPECIFIC SITE. IF SITE CONDITIONS CAUSE INSTALLATION TO DEVIATE FROM THE REQUIREMENTS DETAILED HEREIN, A LICENSED ENGINEER OR ARCHITECT SHALL PREPARE SITE SPECIFIC DOCUMENTS FOR USE WITH THIS DOCUMENT.

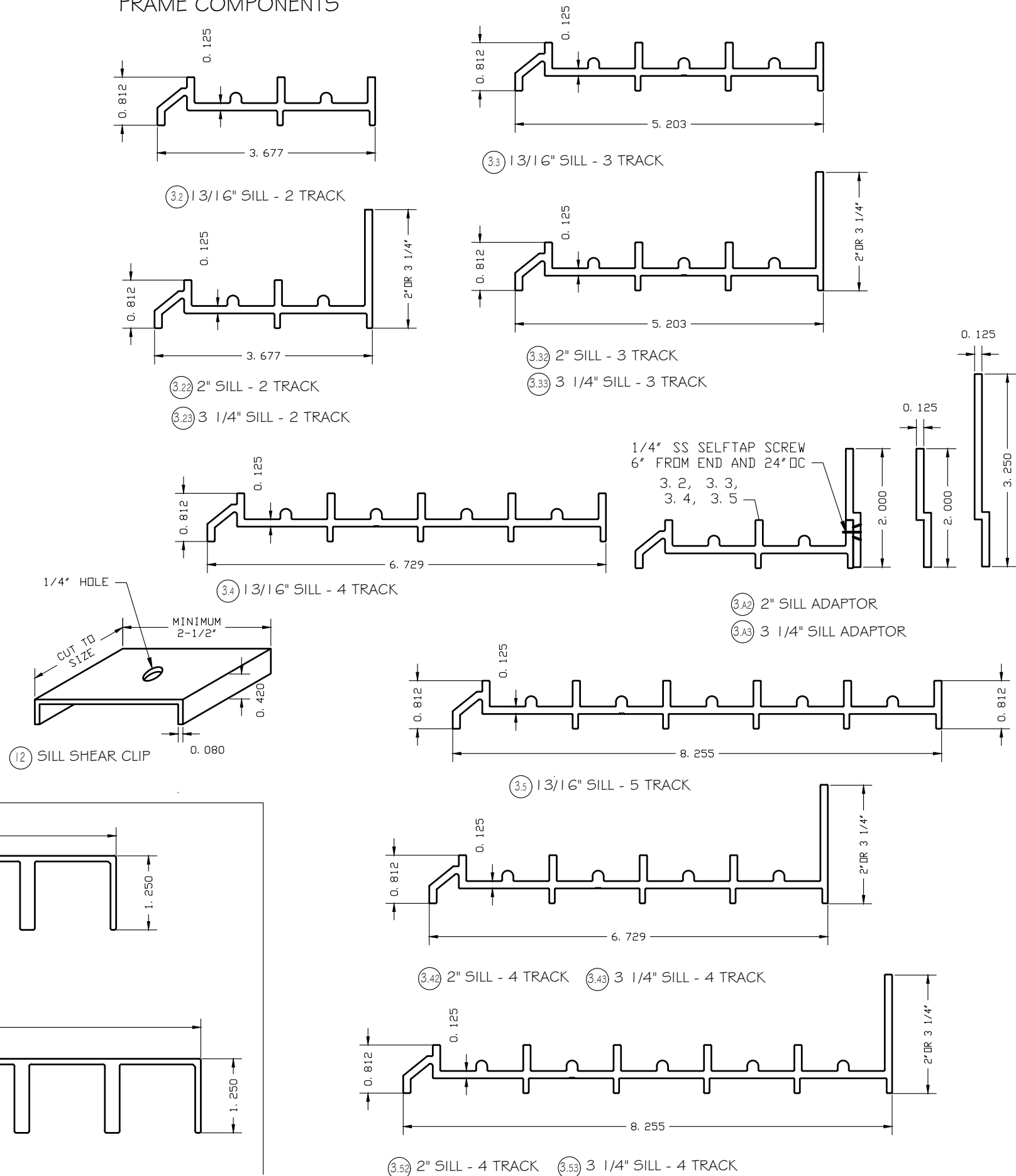


FL #:	FL16271
DATE:	08.02.18
DWG. BY:	HR
CHK. BY:	HFN
SCALE:	NTS
DWG. #:	SDC003
SHEET:	7

s:\projects\southeastern door company\cc-20-0506 - fbc submittal 2020 (version 7) code change for southeastern door company\dwgs\ssdc03.dwg  
12/7/2020 11:28 AM



## FRAME COMPONENTS

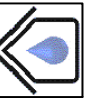


## SOUTHEASTERN DOOR COMPANY

1505 COMMERCE LANE  
JUPITER, FL 33458  
PH: (561) 746-5493

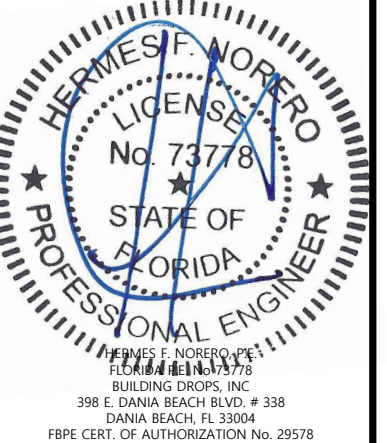
TITLE:  
SERIES "ATLAS HP"  
(LARGE MISSILE IMPACT)  
FRAMING DIE  
COMPONENTS

PREPARED BY:  
BUILDING DROPS, INC.  
398 E. DANIA BEACH BLVD., STE. 338  
DANIA BEACH, FL 33004  
PH: (954) 399-8478  
FAX: (954) 744-4738  
WEB: www.buildingdrops.com



REMARKS	BY	DATE
CODE CHANGE 2020	YC	12/20

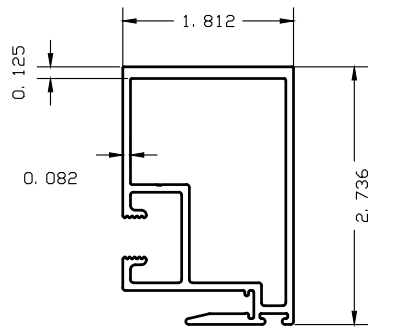
THE INSTALLATION DETAILS DESCRIBED HERE IN ARE GENERIC AND MAY NOT REFLECT ACTUAL CONDITIONS FOR A SPECIFIC SITE. IF SITE CONDITIONS CAUSE INSTALLATION TO DEVIATE FROM THE REQUIREMENTS DETAILED HEREIN, A LICENSED ENGINEER OR ARCHITECT SHALL PREPARE SITE SPECIFIC DOCUMENTS FOR USE WITH THIS DOCUMENT.



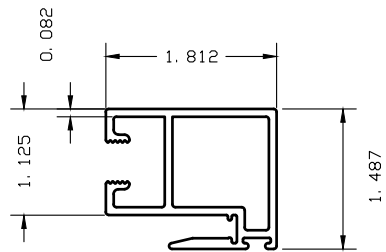
FL #:	FL16271
DATE:	08.02.18
DWG. BY:	HR
CHK. BY:	HFN
SCALE:	NTS
DWG. #:	SDC003
SHEET:	8



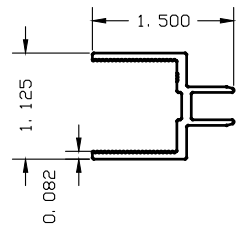
s:\projects\southeastern door company\c20-0506 - fbc submittal 2020 (version 7) code change for southeastern door company\dwgs\ssdc03.dwg  
12/7/2020 11:28 AM



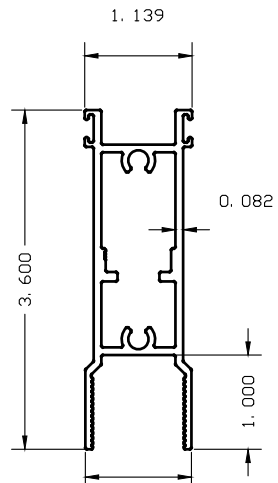
④ ATLAS INTERLOCK



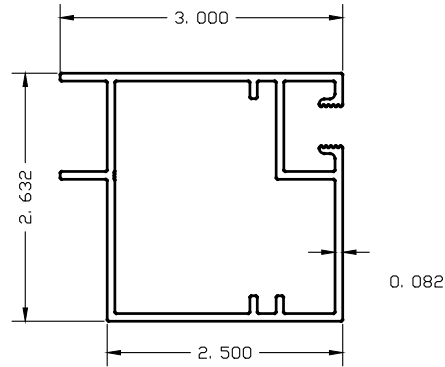
⑤ ATLAS NARROW INTERLOCK STILE



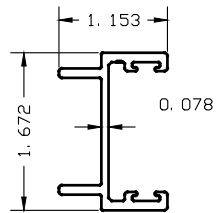
⑧ GLAZING ADAPTER



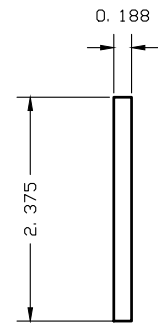
⑨ ATLAS DOOR TOP / BOTTOM RAIL



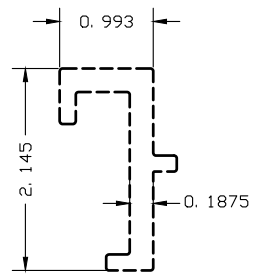
⑥ ATLAS DOOR END RAIL



⑦ ATLAS DOOR ASTRAGAL

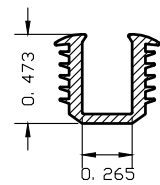


⑩ DOOR END RAIL REINFORCEMENT  
LENGT=FB-2 1/16

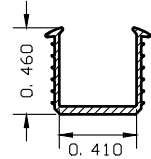


⑪ INTERLOCK REINFORCEMENT  
LENGT=FB-2 1/16

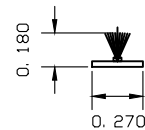
## PANEL COMPONENTS



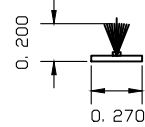
① 1/2" GLAZING CHANNEL



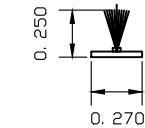
② 13/16" GLAZING CHANNEL



③ W11175 WEATHER STRIPPING



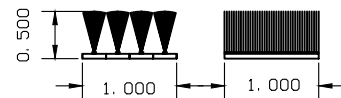
④ W11205 WEATHER STRIPPING



⑤ W11255 WEATHER STRIPPING

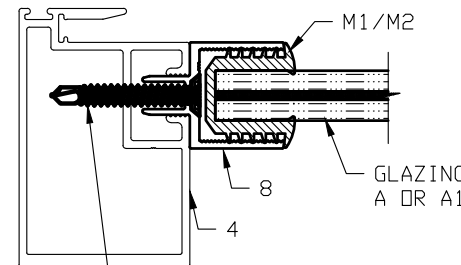
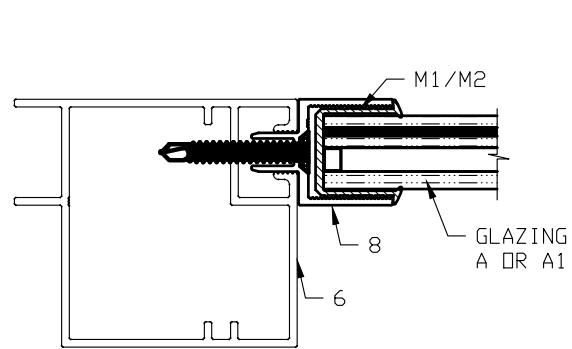


⑥ BULB VINYL

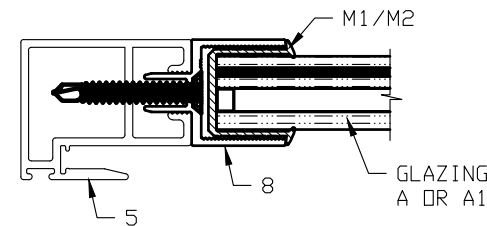
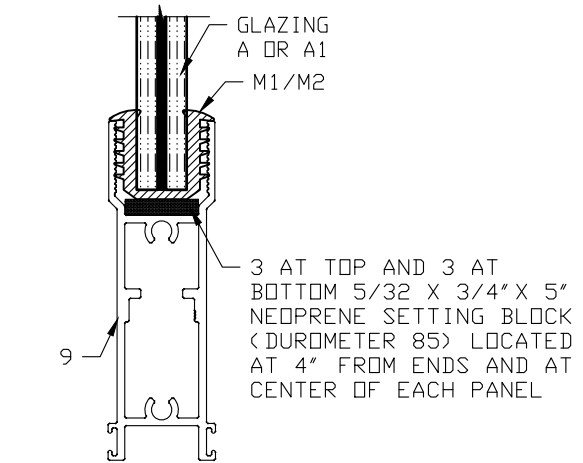


⑦ 1"X1" DUST PLUG

## GLAZING CONFIGURATIONS



TYPICAL GLAZING ADAPTOR (#8)  
ATTACHMENT TO VERTICAL RAILS WITH  
#10 X 1 1/2" SS STFH SCREWS  
LOCATED 1" FROM THE ENDS AND 24" OC

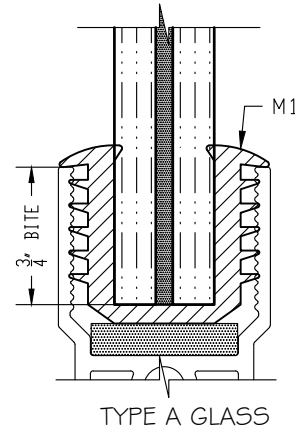


### TYPE A GLASS: LARGE MISSILE IMPACT

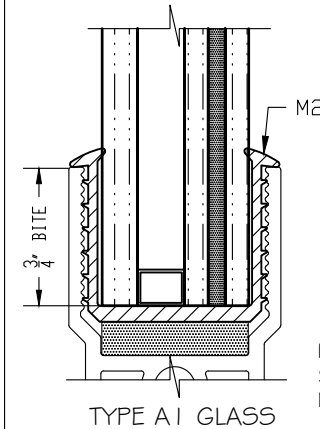
9/16" LAMINATED HS CONFIGURED:  
EXTERIOR LITE: 1/4" HS  
INTERLAYER: 0.090" SGP INTERLAYER BY KURARAY  
INTERIOR LITE: 1/4" HS

### TYPE A1 GLASS: LARGE MISSILE IMPACT

3/4" INSULATED GLASS CONFIGURED:  
EXTERIOR LITE: 3/16" FT  
AIR SPACE: 1/4"  
2ND LITE: 1/8" HS  
INTERLAYER: 0.090" SGP INTERLAYER BY KURARAY  
INTERIOR LITE: 1/8" HS



TYPE A GLASS

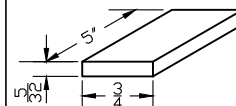


TYPE A1 GLASS

"A & A1" GLAZING  
PRESSURE: +65 PSF, -75 PSF  
MAXIMUM DLO: 46 5/8" X 94 1/16"  
AREA: 30.5 SQF

"A" GLAZING  
PRESSURE: +50 PSF, -50 PSF  
MAXIMUM DLO: 42 5/8" X 111 9/16"  
AREA: 36.1 SQF

INSULATED GLAZING PANELS WITH ANODIZED ALUMINUM  
SPACER WITH DESICCANT LOOSE FILL SETTING ON AND  
LINED WITH BUTYL RUBBER SEALANT



SETTING BLOCK: 3 PER PANEL  
NEOPRENE, DUROMETER 85 AT 4" FROM ENDS AND AT CENTER OF EACH PANEL

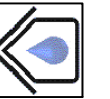


## SOUTHEASTERN DOOR COMPANY

1505 COMMERCE LANE  
JUPITER, FL 33458  
PH: (561) 746-5493

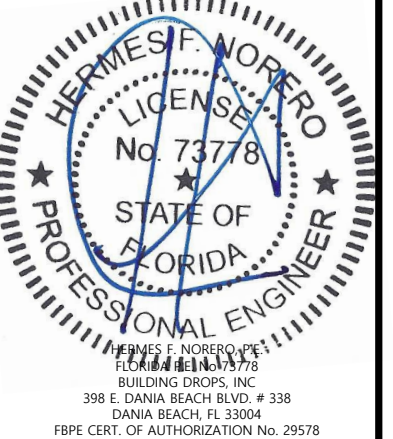
TITLE:  
SERIES "ATLAS HP"  
(LARGE MISSILE IMPACT)  
PANEL DIE COMPONENTS,  
GLAZING CONFIGURATIONS

PREPARED BY:  
BUILDING DROPS, INC.  
398 E. DANIA BEACH BLVD., STE. 338  
DANIA BEACH, FL 33004  
PH: (954) 399-8478  
FAX: (954) 744-4738  
WEB: www.buildingdrops.com



REMARKS	BY	DATE
CODE CHANGE 2020	YC	12/20

THE INSTALLATION DETAILS DESCRIBED HERE IN ARE GENERIC  
AND MAY NOT REFLECT ACTUAL CONDITIONS FOR A SPECIFIC  
SITE. IF SITE CONDITIONS CAUSE INSTALLATION TO DEVIATE  
FROM THE REQUIREMENTS DETAILED HEREIN, A LICENSED  
ENGINEER OR ARCHITECT SHALL PREPARE SITE SPECIFIC  
DOCUMENTS FOR USE WITH THIS DOCUMENT.



FL #:  
**FL16271**

DATE: **08.02.18**

DWG. BY: **HR** CHK. BY: **HFN**

SCALE: **NTS**

DWG. #: **SDC003**

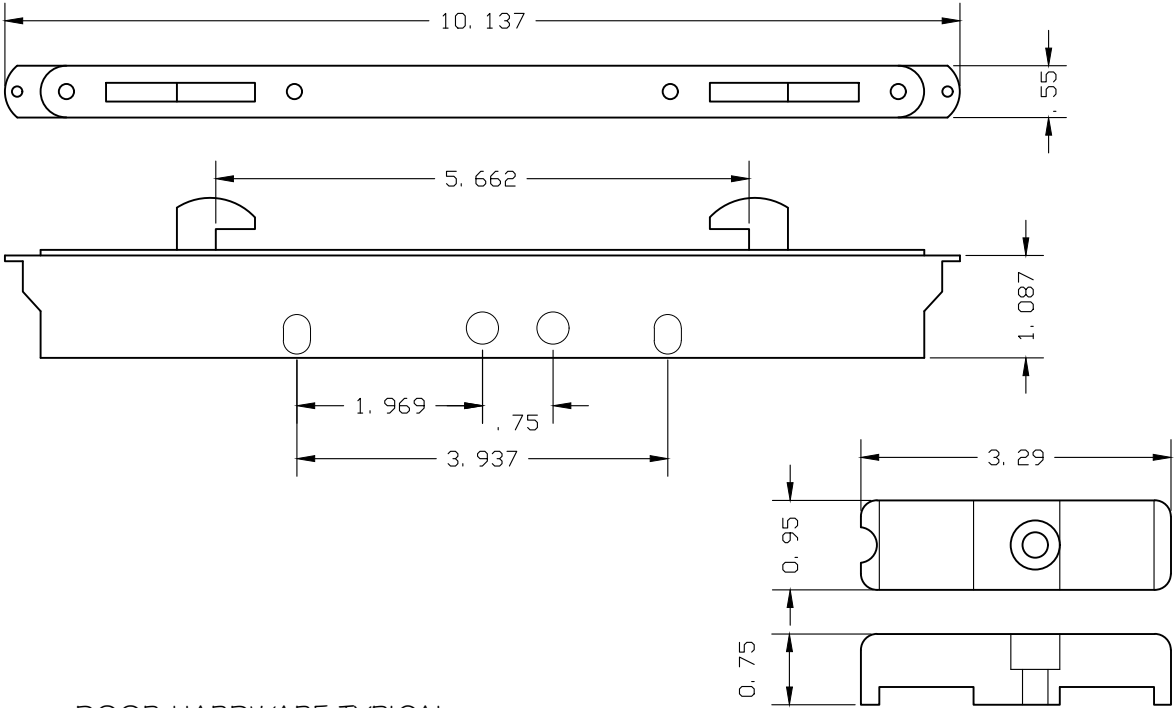
SHEET:

9

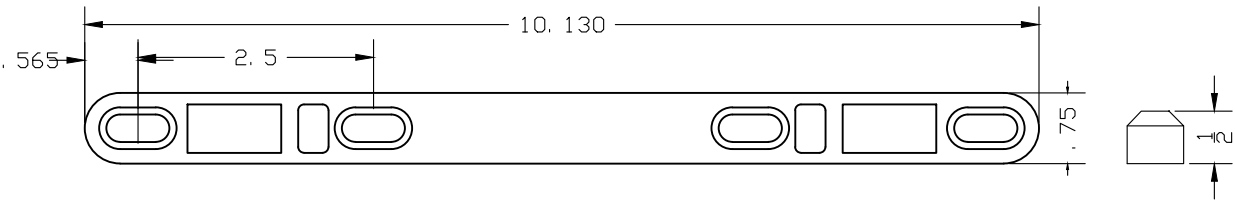
s:\projects\southeastern door company\c20-0506 - fbc submittal 2020 (version 7) code change for southeastern door company\dwgs\ssdc03.dwg  
12/7/2020 11:28 AM

PANEL HARDWARE

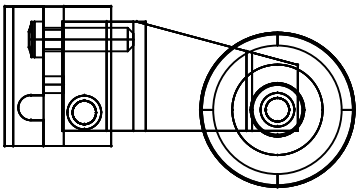
(H1) 2 POINT DEAD LOCK  
1 MULTIPoint MORTISE LOCK PER LOCK MEETING STILE  
HARDWARE SUPPLIER: AMESBURY  
PART #2815-84  
ATTACHED TO THE DOOR WITH (2) #6X 1/4" SS FLAT HEAD SCREWS.



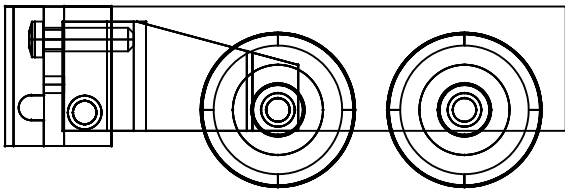
(H2) 2 POINT DEAD LOCK STRIKE PLATE  
1 KEEPER PER MEETING STILE OR JAMB  
HARDWARE SUPPLIER: AMESBURY  
PART #2470-84  
ATTACHED AT JAMB OR ASTRAGAL RAIL  
USING FOUR W/ #10-16X 1-1/2" PHSMS.



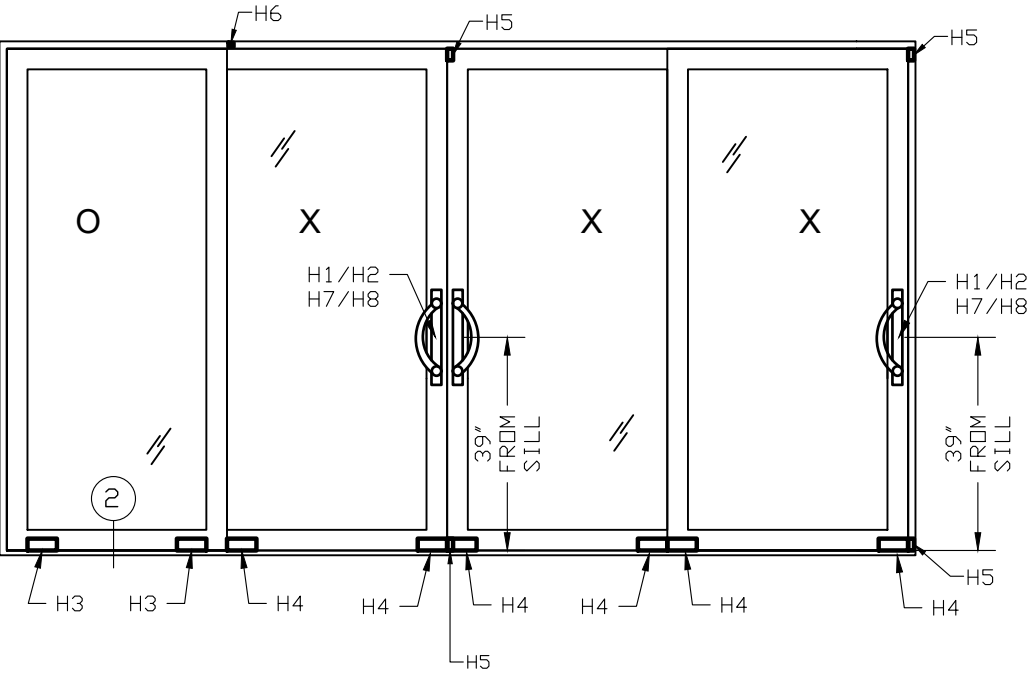
(H3) SINGLE WHEEL ASSEMBLY  
2 PER FIXED DOOR PANEL  
HARDWARE SUPPLIER: AMESBURY  
PART #1966-7000-12  
ADJUSTABLE 1 11/16" DIAMETER NYLON ROLLER  
ASSEMBLY WITH ALUMINUM HOUSING ATTACHED TO  
THE BOTTOM RAIL USING ONE 1/4"X1 SS ROD.



(H4) TANDEM WHEEL ASSEMBLY  
2 PER OPERABLE DOOR PANEL  
HARDWARE SUPPLIER: AMESBURY  
PART #1966-7501-14  
ADJUSTABLE 1 11/16" DIAMETER NYLON ROLLER  
ASSEMBLY WITH ALUMINUM HOUSING ATTACHED TO  
THE BOTTOM RAIL USING ONE 1/4"X1 SS ROD.

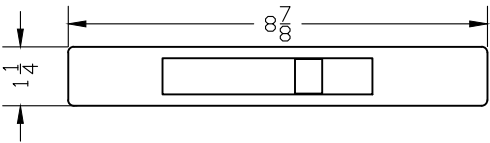


DOOR HARDWARE TYPICAL

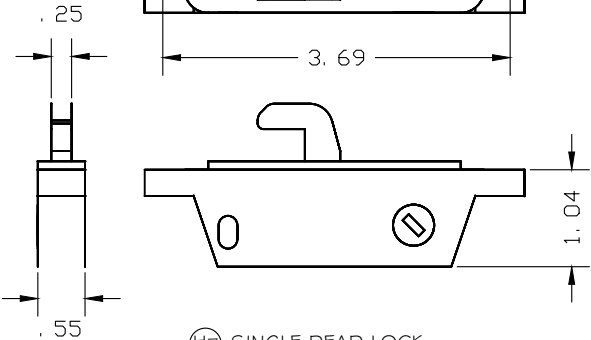
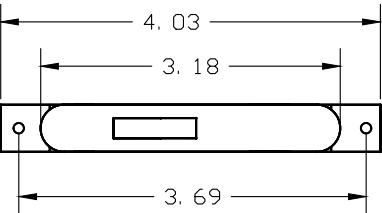


H5- ACTIVE DOOR STILE BUMPER  
2 PER EACH LOCKING STILE SECURED TO THE TOP AND BOTTOM OF THE VERTICAL  
LOCKING STILE WITH (1) 1/4" SMS  
H6- 1/8-1X1 FIXED PANEL HOLD CLIP  
1 PER EACH FIXED PANEL SECURED ONLY TO THE TOP HEADER WITH (1) #8 SMS.

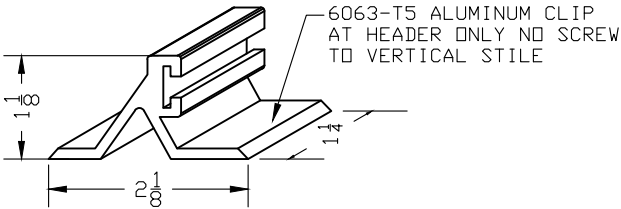
(H5) BUMPER



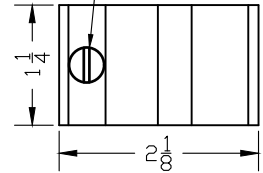
(H9) RECESSED PULL HANDLE  
ADAMS RITE 4431



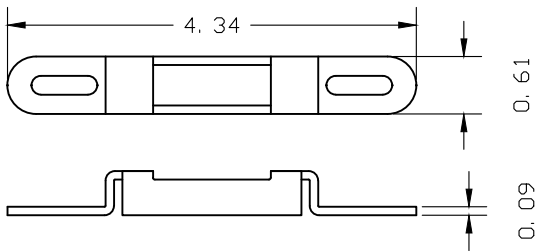
(H7) SINGLE DEAD LOCK  
1 LOCK PER LOCK MEETING STILE  
HARDWARE SUPPLIER: AMESBURY  
PART #537-84  
ATTACHED TO THE DOOR WITH  
(2) #6X 1/4" SS FLAT HEAD SCREWS.



(1) #8X1/2 SMS SECURING  
CLIP TO HEADER



(H6) FIXED PANEL HOLD CLIP



(H8) SINGLE DEAD LOCK STRIKE PLATE  
1 PLATE PER LOCK  
HARDWARE SUPPLIER: AMESBURY  
PART #537-84  
ATTACHED TO THE DOOR WITH (2) #10-16" SS FH SMS



SOUTHEASTERN DOOR COMPANY

1505 COMMERCE LANE  
JUPITER, FL 33458  
PH: (561) 746-5493

TITLE:  
SERIES "ATLAS HP"  
(LARGE MISSILE IMPACT)

PANEL HARDWARE

PREPARED BY:

BUILDING DROPS, INC.

398 E. DANIA BEACH BLVD., STE. 338  
DANIA BEACH, FL 33004

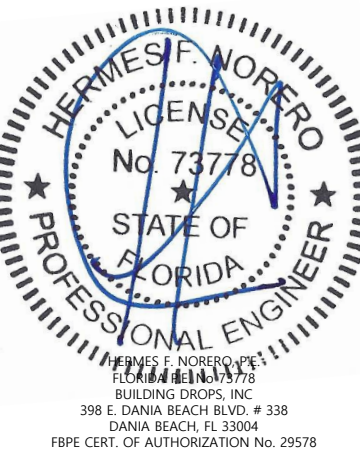
PH: (954) 399-8478  
FAX: (954) 744-4738

WEB: www.buildingdrops.com



REMARKS	BY	DATE
CODE CHANGE 2020	YC	12/20

THE INSTALLATION DETAILS DESCRIBED HEREIN ARE GENERIC  
AND MAY NOT REFLECT ACTUAL CONDITIONS FOR A SPECIFIC  
SITE. IF SITE CONDITIONS CAUSE INSTALLATION TO DEVIATE  
FROM THE REQUIREMENTS DETAILED HEREIN, A LICENSED  
ENGINEER OR ARCHITECT SHALL PREPARE SITE SPECIFIC  
DOCUMENTS FOR USE WITH THIS DOCUMENT.



FL #:	FL16271
DATE:	08.02.18
DWG. BY:	HR
CHK. BY:	HFN
SCALE:	NTS
DWG. #:	SDC003
SHEET:	10

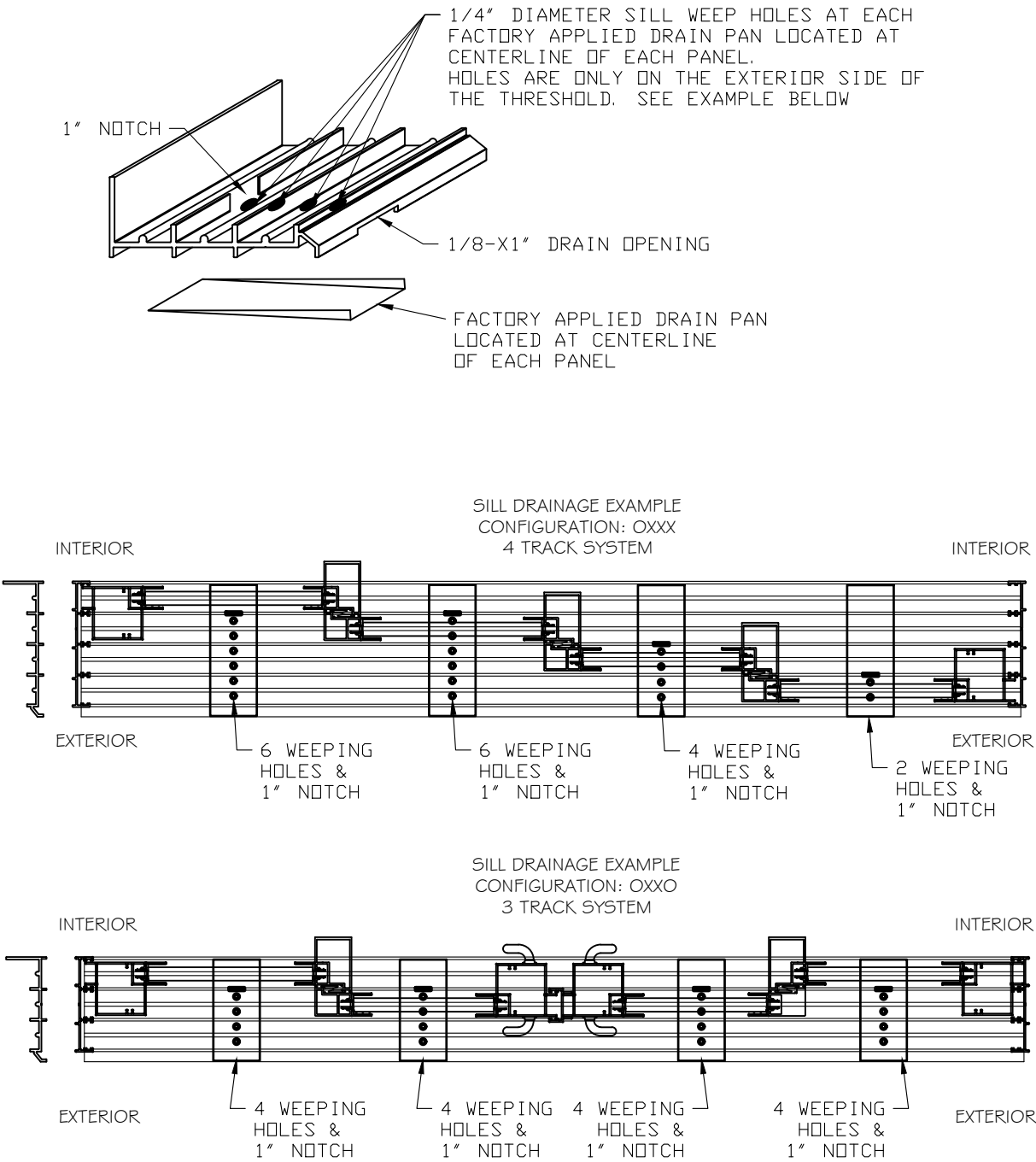
LIST OF COMPONENTS

ITEM	DESCRIPTION	MATERIAL	SUPPLIER
1	JAMB FRAMING & ACCESSORIES		
1.1	OPTIONAL JAMB SNAP COVER	6063-T5 ALUMINUM	SOUTHEASTERN DOOR COMPANY
1.2	2 TRACK - JAMB FRAME	6063-T6 ALUMINUM	SOUTHEASTERN DOOR COMPANY
1.3	3 TRACK - JAMB FRAME	6063-T6 ALUMINUM	SOUTHEASTERN DOOR COMPANY
1.4	4 TRACK - JAMB FRAME	6063-T6 ALUMINUM	SOUTHEASTERN DOOR COMPANY
1.5	5 TRACK - JAMB FRAME	6063-T6 ALUMINUM	SOUTHEASTERN DOOR COMPANY
1P	POCKET JAMB	6063-T6 ALUMINUM	SOUTHEASTERN DOOR COMPANY
1P.1	POCKET JAMB SNAP COVER	6063-T5 ALUMINUM	SOUTHEASTERN DOOR COMPANY
2	HEADER FRAMING		
2.2	2 TRACK - HEADER FRAME	6063-T6 ALUMINUM	SOUTHEASTERN DOOR COMPANY
2.3	3 TRACK - HEADER FRAME	6063-T6 ALUMINUM	SOUTHEASTERN DOOR COMPANY
2.4	4 TRACK - HEADER FRAME	6063-T6 ALUMINUM	SOUTHEASTERN DOOR COMPANY
2.5	5 TRACK - HEADER FRAME	6063-T6 ALUMINUM	SOUTHEASTERN DOOR COMPANY
3	SILL FRAMING		
3.2	2 TRACK - 13/16" SILL FRAME	6063-T6 ALUMINUM	SOUTHEASTERN DOOR COMPANY
3.22	2 TRACK - 2" SILL FRAME	6063-T6 ALUMINUM	SOUTHEASTERN DOOR COMPANY
3.23	2 TRACK - 3 1/4" SILL FRAME	6063-T6 ALUMINUM	SOUTHEASTERN DOOR COMPANY
3.3	3 TRACK - 13/16" SILL FRAME	6063-T6 ALUMINUM	SOUTHEASTERN DOOR COMPANY
3.32	3 TRACK - 2" SILL FRAME	6063-T6 ALUMINUM	SOUTHEASTERN DOOR COMPANY
3.33	3 TRACK - 3 1/4" SILL FRAME	6063-T6 ALUMINUM	SOUTHEASTERN DOOR COMPANY
3.4	4 TRACK - 13/16" SILL FRAME	6063-T6 ALUMINUM	SOUTHEASTERN DOOR COMPANY
3.42	4 TRACK - 2" SILL FRAME	6063-T6 ALUMINUM	SOUTHEASTERN DOOR COMPANY
3.43	4 TRACK - 3 1/4" SILL FRAME	6063-T6 ALUMINUM	SOUTHEASTERN DOOR COMPANY
3.5	5 TRACK - 13/16" SILL FRAME	6063-T6 ALUMINUM	SOUTHEASTERN DOOR COMPANY
3.52	5 TRACK - 2" SILL FRAME	6063-T6 ALUMINUM	SOUTHEASTERN DOOR COMPANY
3.53	5 TRACK - 3 1/4" SILL FRAME	6063-T6 ALUMINUM	SOUTHEASTERN DOOR COMPANY
3.A2	2" SILL ADAPTOR	6063-T6 ALUMINUM	SOUTHEASTERN DOOR COMPANY
3.A3	3 1/4" SILL ADAPTOR	6063-T6 ALUMINUM	SOUTHEASTERN DOOR COMPANY
4	ATLAS INTERLOCK STILE	6063-T6 ALUMINUM	SOUTHEASTERN DOOR COMPANY
5	ATLAS NARROW INTERLOCK STILE	6063-T6 ALUMINUM	SOUTHEASTERN DOOR COMPANY
6	ATLAS DOOR END RAIL	6063-T6 ALUMINUM	SOUTHEASTERN DOOR COMPANY
7	ATLAS DOOR ASTRAGAL	6063-T6 ALUMINUM	SOUTHEASTERN DOOR COMPANY
8	GLAZING ADAPTOR	6063-T6 ALUMINUM	SOUTHEASTERN DOOR COMPANY
9	ATLAS DOOR TOP / BOTTOM RAIL	6063-T6 ALUMINUM	SOUTHEASTERN DOOR COMPANY
10	END RAIL REINFORCEMENT	6063-T6 ALUMINUM	SOUTHEASTERN DOOR COMPANY
11	INTERLOCK REINFORCEMENT	6063-T6 ALUMINUM	SOUTHEASTERN DOOR COMPANY
12	SILL SHEAR CLIP	6063-T6 ALUMINUM	SOUTHEASTERN DOOR COMPANY

ITEM	DESCRIPTION	MATERIAL	SUPPLIER
M1	1/2" GLAZING GASKET	PVC	TEAM PLASTICS INC
M2	13/16" GLAZING GASKET	PVC	TEAM PLASTICS INC
M3	W11175 PILE WEATHER STRIPPING		ULTRAFAB
M4	W11205 PILE WEATHER STRIPPING		ULTRAFAB
M5	W11255 PILE WEATHER STRIPPING		ULTRAFAB
M6	BULB VINYL	NEOPRENE	ULTRAFAB
M7	DUST PLUG		ULTRAFAB

ITEM	DESCRIPTION	MATERIAL	SUPPLIER
H1	2 POINT DEAD LOCK	STAINLESS STEEL	AMESBURY
H2	2 POINT LOCK STRIKE PLATE	STAINLESS STEEL	AMESBURY
H3	SINGLE WHEEL ASSEMBLY	ALUM. / NYLON	AMESBURY
H4	TANDEM WHEEL ASSEMBLY	ALUM. / NYLON	AMESBURY
H5	DOOR BUMPER	80 SHORE A NBR.	FRANK LOWE RUBBER & GASKER CO.
H6	FIXED PANEL HOLD CLIP W/ #8 SCREW	6063-T5 ALUMINUM	SOUTHEASTERN DOOR COMPANY
H7	SINGLE DEAD LOCK	STAINLESS STEEL	AMESBURY
H8	SINGLE STRIKE PLATE	STAINLESS STEEL	AMESBURY
H9	RECESSED PULL HANDLE	CAST ALUMINUM	ADAMS RITE

SILL DRAINAGE



SOUTHEASTERN DOOR COMPANY

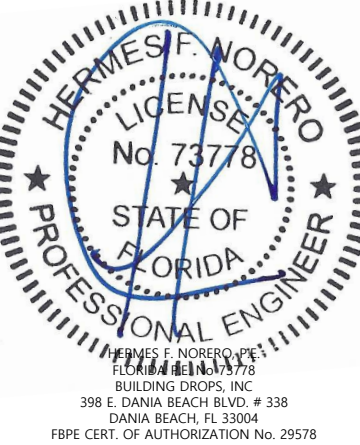
1505 COMMERCE LANE  
JUPITER, FL 33458  
PH: (561) 746-5493

TITLE:  
SERIES "ATLAS HP"  
(LARGE MISSILE IMPACT)  
LIST OF COMPONENTS

PREPARED BY:  
BUILDING DROPS, INC.  
398 E. DANIA BEACH BLVD., STE. 338  
DANIA BEACH, FL 33004  
PH: (954) 399-8478  
FAX: (954) 744-4738  
WEB: www.buildingdrops.com

REMARKS	BY	DATE
CODE CHANGE 2020	YC	12/20

THE INSTALLATION DETAILS DESCRIBED HERE IN ARE GENERIC AND MAY NOT REFLECT ACTUAL CONDITIONS FOR A SPECIFIC SITE. IF SITE CONDITIONS CAUSE INSTALLATION TO DEVIATE FROM THE REQUIREMENTS DETAILED HEREIN, A LICENSED ENGINEER OR ARCHITECT SHALL PREPARE SITE SPECIFIC DOCUMENTS FOR USE WITH THIS DOCUMENT.



FL #:

FL16271

DATE: 08.02.18

DWG. BY: HR  
CHK. BY: HFN

SCALE: NTS

DWG. #: SDC003

SHEET:

11