



DEPARTMENT OF REGULATORY AND ECONOMIC RESOURCES (RER)
BOARD AND CODE ADMINISTRATION DIVISION

NOTICE OF ACCEPTANCE (NOA)

MIAMI-DADE COUNTY
PRODUCT CONTROL SECTION
11805 SW 26 Street, Room 208
Miami, Florida 33175-2474
T (786) 315-2590 F (786) 315-2599
www.miamidade.gov/economy

Jupiter Glass specialties Inc., dba
South Eastern Door Company
1505 Commerce Lane P.O. Box 794
Jupiter, FL 33458

SCOPE:

This NOA is being issued under the applicable rules and regulations governing the use of construction materials. The documentation submitted has been reviewed and accepted by Miami-Dade County RER -Product Control Section to be used in Miami Dade County and other areas where allowed by the Authority Having Jurisdiction (AHJ).

This NOA shall not be valid after the expiration date stated below. The Miami-Dade County Product Control Section (In Miami Dade County) and/or the AHJ (in areas other than Miami Dade County) reserve the right to have this product or material tested for quality assurance purposes. If this product or material fails to perform in the accepted manner, the manufacturer will incur the expense of such testing and the AHJ may immediately revoke, modify, or suspend the use of such product or material within their jurisdiction. RER reserves the right to revoke this acceptance, if it is determined by Miami-Dade County Product Control Section that this product or material fails to meet the requirements of the applicable building code.

This product is approved as described herein, and has been designed to comply with the Florida Building Code, including the High Velocity Hurricane Zone.

DESCRIPTION: Series Atlas HP Aluminum Sliding Glass Door w/wo reinforcements -SMI

APPROVAL DOCUMENT: Drawing No. **18-052SM** (former **16-093 SM**), titled "Sliding Glass Door", sheets 1 through 11 of 11, prepared by PPMF Inc., dated JAN 29, 2018, signed and sealed by Pedro De Figueiredo, P.E., bearing the Miami-Dade County Product Control Revision stamp with the Notice of Acceptance number and expiration date by the Miami-Dade County Product Control Section.

MISSILE IMPACT RATING: Small Missile Impact Resistant

Limitations:

1. See Design Pressure (DP) Rating, +ve DP and max frame size limitation in sheet 1 and in note 2 in sheet 2. See glass capacity DP and DLO limitation in sheet 9. Lower design pressure shall control.
2. See reinforcement requirements in sheet 4.
3. Pocket structure, under separate approval to be reviewed by Building officials.

LABELING: Each unit shall bear a permanent label with the manufacturer's name or logo, city, state and series and following statement: "Miami-Dade County Product Control Approved", noted herein.

RENEWAL of this NOA shall be considered after a renewal application has been filed and there has been no change in the applicable building code negatively affecting the performance of this product.

TERMINATION of this NOA will occur after the expiration date or if there has been a revision or change in the materials, use, and/or manufacture of the product or process. Misuse of this NOA as an endorsement of any product, for sales, advertising or any other purposes shall automatically terminate this NOA. Failure to comply with any section of this NOA shall be cause for termination and removal of NOA.

ADVERTISEMENT: The NOA number preceded by the words Miami-Dade County, Florida, and followed by the expiration date may be displayed in advertising literature. If any portion of the NOA is displayed, then it shall be done in its entirety.

INSPECTION: A copy of this entire NOA shall be provided to the user by the manufacturer or its distributors and shall be available for inspection at the job site at the request of the Building Official.

This NOA **revises** # **17-0410.02** consists of this page 1 and evidence pages E-1 & E-2, as well as approval document mentioned above.

The submitted documentation was reviewed by **Ishaq I. Chanda, P.E.**



NOA No. 18-0201.13
Expiration Date: August 17, 2022
Approval Date: March 22, 2018
Page 1

3/13/18

NOTICE OF ACCEPTANCE: EVIDENCE SUBMITTED

1. Evidence submitted under previous approvals

A. DRAWINGS

1. Manufacturer's die drawings and sections.
2. Drawing No. **16-093 SM**, titled "Sliding Glass Door", sheets 1 through 11 of 11, prepared by EngCo. Inc., dated 01/23/17 and last revised on AUG 02, 2017, signed and sealed by Pedro De Figueiredo, P.E.

B. TESTS

1. Test reports on: 1) Air Infiltration Test, per FBC, TAS 202-94
2) Uniform Static Air Pressure Test, Loading per FBC, TAS 202-94
3) Water Resistance Test, per FBC, TAS 202-94
4) Small Missile Impact Test per FBC, TAS 201-94
5) Large Missile Impact Test per FBC, TAS 201-94
6) Cyclic Wind Pressure Loading per FBC, TAS 203-94
7) Forced Entry Test, per FBC 2411 3.2.1 and TAS 202-94

along with marked-up drawings and installation diagram of Aluminum Sliding Glass Doors, prepared by Black Water Testing, Inc., Test Report No. **BT-SED-16-001**, dated DEC 23, 2016, signed & sealed by Constantin Bortes, P. E.

Note: This test report is revised by addendum letter, issued by Black Water Testing Inc., dated 03/27/17, signed & sealed by Constantin Bortes, P. E.

C. CALCULATIONS

1. Anchor verification calculation, complying w/ FBC 2014, prepared by EngCo. Inc., dated FEB 02, 2017, signed and sealed by Pedro De Figueiredo, P.E.
2. Glazing complies with ASTM E-1300-02, -04 & -09.

D. QUALITY ASSURANCE

1. Miami Dade Department of Regulatory and Economic Resources (RER).

E. MATERIAL CERTIFICATIONS

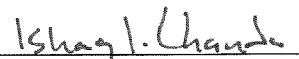
1. Notice of Acceptance No. **14-0916.11** issued to **Kuraray America, Inc.** (Former E.I. DuPont DeNemours & Co., Inc. for the "**Sentry Glass ® (Clear and White) Glass Interlayers**", expiring on 07/04/18.

F. STATEMENTS

1. Statement letter of compliance w/ FBC-2014 and "No financial interest" dated 02/02/17, prepared by EngCo, Inc., signed and sealed by Pedro De Figueiredo, P.E.
2. Active status listing of incorporation with Florida Department of State of Jupiter Glass Specialties, Inc., since 03/17/1980.
3. Active status listing of fictitious name with Florida Department of State of the Southeastern door Company, since 01/01/1991.

G. OTHER

1. Test proposal **#16-072**, dated June 22, 2016 approved by RER.
2. Reference LMI NOA # 17-0214.03.



Ishaq I. Chanda, P.E.
Product Control Examiner
NOA No. 18-0201.13

Expiration Date: August 17, 2022
Approval Date: March 18, 2018

Jupiter Glass specialties Inc., dba
South Eastern Door Company

NOTICE OF ACCEPTANCE: EVIDENCE SUBMITTED

2. New Evidence submitted.

A. DRAWINGS

1. Drawing No. **18-052SM** (former **16-093 SM**), titled "Sliding Glass Door", sheets 1 through 11 of 11, prepared by PPMF Inc., dated JAN 29, 2018, signed and sealed by Pedro De Figueiredo, P.E.

B. TESTS

1. None.

C. CALCULATIONS

1. None.

D. QUALITY ASSURANCE

1. Miami Dade Department of Regulatory and Economic Resources (RER).

E. MATERIAL CERTIFICATIONS

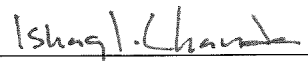
1. Notice of Acceptance No. **17-0808.02** issued to Kuraray America, Inc. (former E.I. DuPont DeNemours & Co., Inc.) for the "Kuarary **Sentry Glass ® Interlayer**", expiring on 07/4/23.

F. STATEMENTS

1. Statement letter of conformance to FBC 2017(6th edition), prepared by PPMF Inc., dated JAN 29, 2018, signed and sealed by Pedro De Figueiredo, P.E.

G. OTHER

1. This NOA revises NOA # **17-0410.02**, expiring 08/17/2022.



Ishaq I. Chanda, P.E.
Product Control Examiner
NOA No. 18-0201.13

Expiration Date: August 17, 2022
Approval Date: March 18, 2018

GENERAL NOTES:

FLORIDA BUILDING CODE 2017 (6th ed) HVHZ
SMALL MISSILE IMPACT RATED

- 1- CODE: THIS PRODUCT HAS BEEN TESTED AND DESIGNED IN ACCORDANCE WITH THE FBC 2017 6TH EDITION INCLUDING THE HIGH VELOCITY HURRICANE ZONE (HVHZ).
- 2- DEFINITION: THIS PRODUCT IS AN ALUMINUM SLIDING GLASS DOOR DESIGNED, CONSTRUCTED AND TESTED PROVIDING PROTECTION FROM HURRICANE FORCE WINDS AND WIND BORNE DEBRIS (LARGE AND SMALL MISSILE) WITHIN THE ALLOWABLE DESIGNED PRESSURES AND LIMITATIONS STATED IN THIS APPROVAL. INSTALLATION OF HURRICANE PROTECTION DEVICES IS REQUIRED FOR INSTALLATIONS BELOW 30' ELEVATION.
- 3- POSTING: PRODUCT SHALL BE LABELED AS FOLLOW:

"JUPITER GLASS SPECIALTIES, INC DBA
SOUTHEASTERN DOOR COMPANY - JUPITER - FLORIDA
SERIES ATLAS HP SLIDING GLASS DOOR
SMALL MISSILE IMPACT RATED
MIAMI-DADE PRODUCT CONTROL APPROVED

- 4- LOADS: DESIGNED LOAD CALCULATED BASED ON THE ASCE 7-10 AND PROVIDED BY A PROFESSIONAL ARCHITECT OR ENGINEER FOR EACH SPECIFIC PROJECT. THE CALCULATED DESIGNED PRESSURE MUST NOT EXCEED THE ALLOWABLE PRESSURES HERE IN SPECIFIED. THE DESIGN PRESSURES, AS DETERMINED FROM ASCE 7-10, ARE PERMITTED TO BE MULTIPLE BY 0.6
- 5- MATERIAL: ALL ALUMINUM PARTS TO BE 6063-T6 ALLOY OR AS NOTED AND GLAZING TO BE LAMINATED IMPACT GLASS AS SPECIFIED ON THIS APPROVAL.
- 6- FASTENERS: ASSEMBLY SCREWS AND ANCHORS SHALL BE AS SPECIFIED IN THE CURRENT SET OF DRAWINGS. INSTALLATION AND LOADS AS PER THIS APPROVAL. ANCHOR SPACING AND LOADS MUST NOT EXCEED THE MAXIMUM LIMITS SPECIFIED BY THIS APPROVAL.
- 7- USE: IT SHALL BE THE RESPONSIBILITY OF THE CONTRACTOR, ARCHITECT OR ENGINEER OF RECORD TO VERIFY THE FOLLOWING:
- 7.1- THE STABILITY OF THE STRUCTURE WHERE THE PRODUCT IS TO BE ATTACHED INSURING PROPER ANCHORAGE.
- 7.2- THE SITE SPECIFIC PROJECT CRITERIA, SUCH AS BUT NOT LIMITED TO, LOCAL CODE REQUIREMENTS, DESIGNED PRESSURES ETC.
- 7.3- THAT THIS APPROVAL IS ADEQUATE TO THE SPECIFIC PROJECT.
- 8- DISSIMILAR MATERIALS: WHERE ALUMINUM IS IN CONTACT OR FASTENED TO DISSIMILAR MATERIALS, INCLUDING BUT NOT LIMITED TO STEEL, INSTALLATION SHALL MEET THE REQUIREMENTS OF CHAPTER M.7 OF THE ALUMINUM DESIGN MANUAL 2015.

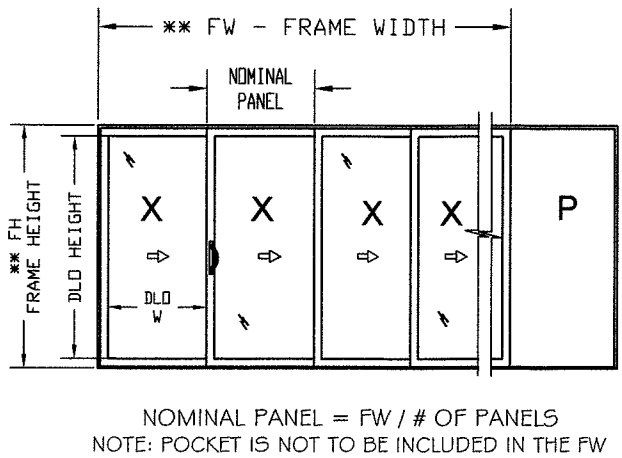
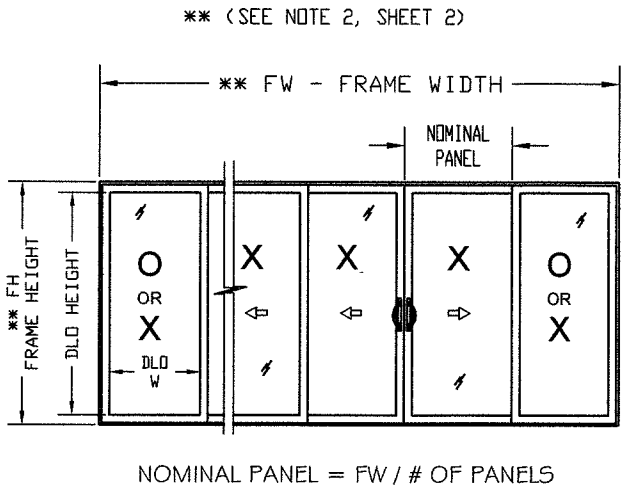
DOOR UNIT SELECTION PROCEDURE AND INSTRUCTIONS TO USE
THIS DRAWING TO VERIFY DOOR ADEQUACY PRESSURE

- STEP 1 - SHEET 1 GENERAL NOTE 4: DETERMINE PROJECT DESIGNED PRESSURE (DP) AS INDICATED.
- STEP 2 - SHEET 1: COMPARE (DP) WITH PRODUCT DESIGN RATING, FUNCTION OF DOOR SIZES FW x FH AND POSITIVE PRESSURE OF THRESHOLD RISER
- STEP 3 - SHEET 5, 6 & 7: SELECT FRAME ANCHORING IN ACCORDANCE WITH 2, 3, 4 OR 5 TRACK SELECTION.
- STEP 4 - THE PRODUCT DESIGNED RATING MUST BE EQUAL OR GREATER THAN THE CALCULATED PROJECT WIND PRESSURE (PD)

TABLE OF CONTENTS:

SHEET	DESCRIPTION
1	GENERAL NOTES, PRODUCT DESIGN RATING AND QUALIFICATIONS
2	DOOR SAMPLE ELEVATIONS WITH FIXED AND OPERABLE PANELS AND POCKET CONFIGURATION
3	TYPICAL ELEVATION WITH CROSS SECTIONS LOCATOR
4	DOOR SECTIONS DETAILS
5	JAMB FRAMING ANCHORAGE DETAILS
6	HEADER FRAMING ANCHORAGE DETAILS
7	SILL FRAMING ANCHORAGE DETAILS
8	FRAMING DIE COMPONENTS
9	PANEL DIE COMPONENTS, GLAZING CONFIGURATIONS
10	PANEL HARDWARE
11	LIST OF COMPONENTS

PRODUCT DESIGN RATING AND QUALIFICATIONS



DESIGN PRESSURE RATING	IMPACT RATING	PANEL SIZES	MAX. FW X FH
+65 PSF * -75 PSF	LARGE & SMALL MISSILE IMPACT	52" X 100 1/2" NOMINAL MODULE	468" X 102 1/2"
±50 PSF *	LARGE & SMALL MISSILE IMPACT	48" X 117" NOMINAL MODULE	432" X 120"

* POSITIVE (EXTERIOR) DP SELECTION

THRESHOLD RISER TYPE	MAXIMUM PRESSURES (PSF)	
	CASE 1	CASE 2
3-1/4"	+65	+65
2"	+65	+50
13/16"	+65	--

NOTES:

- 1- CASE 1: MAXIMUM POSITIVE PRESSURES FOR 3-1/4", 2" OR 13/16" THRESHOLD WITH OVERHANG AS PER ILLUSTRATION "Z".
- 2- CASE 2: MAXIMUM POSITIVE PRESSURES FOR 3-1/4" AND 2" THRESHOLD RISER W/OUT THE OVERHANG.
- 3- THE POSITIVE PRESSURE SHALL BE THE LESSER VALUE FROM THE ABOVE TABLE

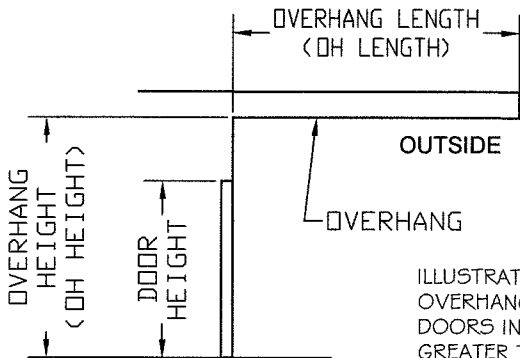
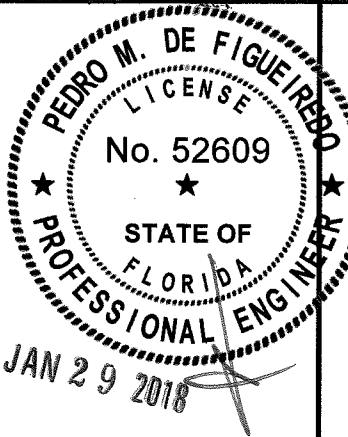


ILLUSTRATION "Z"
OVERHANG IN COMPLIANCE WITH THE FBC REQUIREMENTS. DOORS INSTALLED WHERE THE OVERHANG (OH) RATIO IS GREATER TO OR MORE THAN 1 NEED NOT TO BE TESTED FOR WATER INFILTRATION. THE OH RATIO SHALL BE CALCULATED BY THE FOLLOWING EQUATION
OH RATIO = OH LENGTH / OH HEIGHT >= 1.0

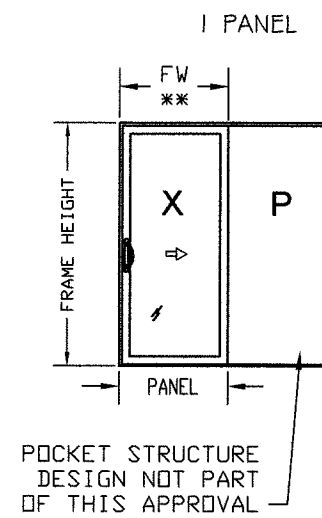
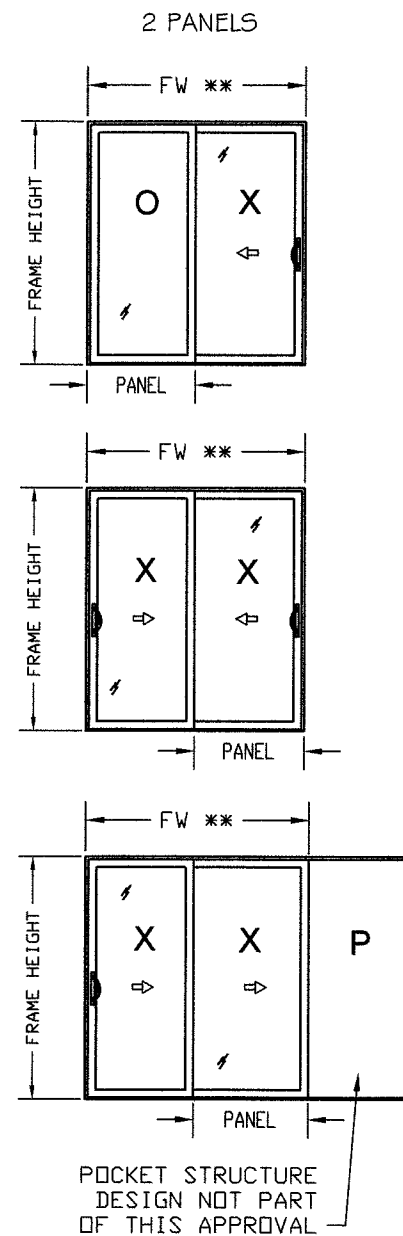
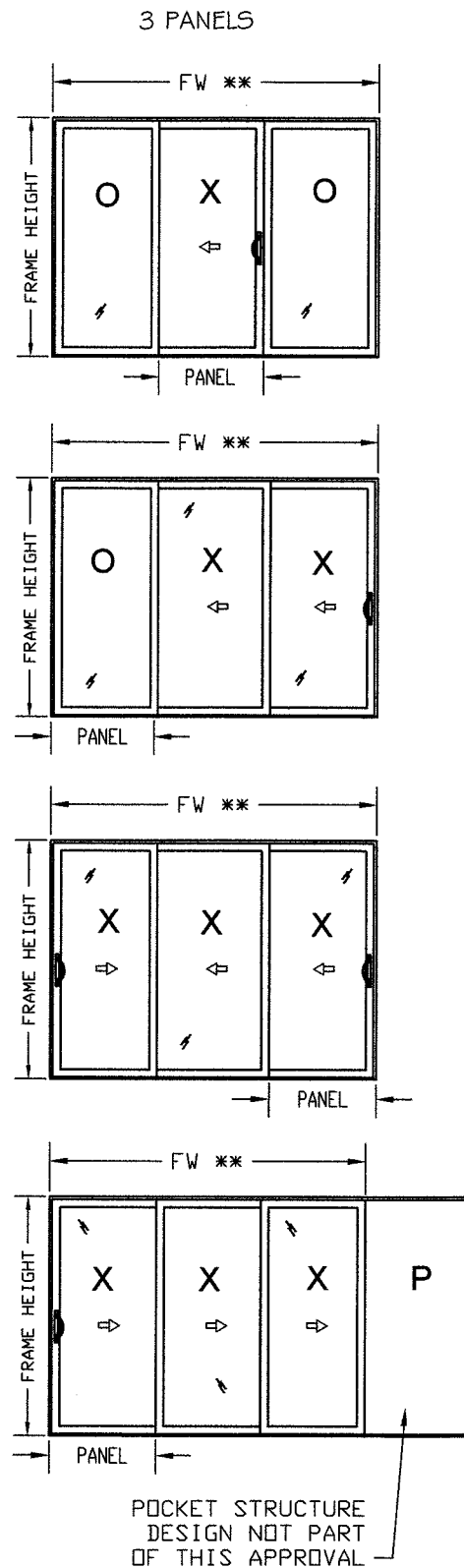
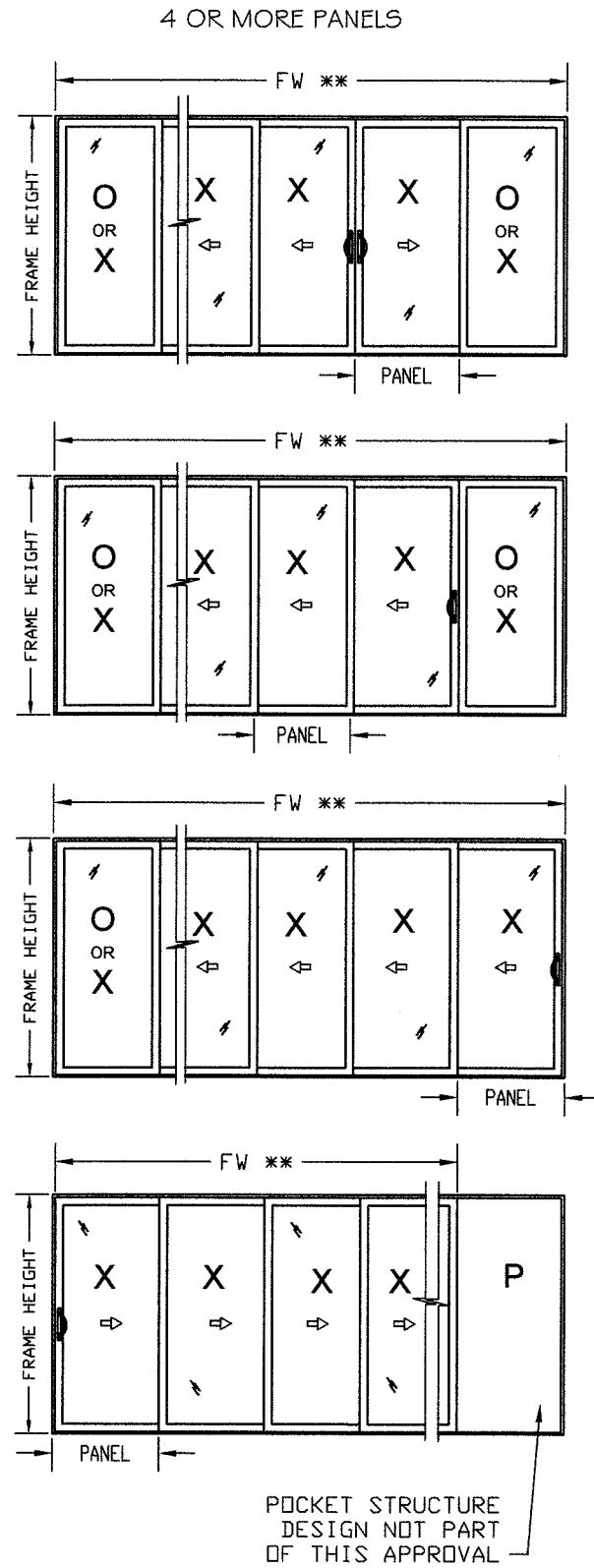


PRODUCT: SLIDING GLASS DOOR
SMALL MISSILE IMPACT RATED

MANUFACTURER: SOUTHEASTERN
Manufacturers of Impact Resistant Sliding Glass Doors
1505 COMMERCE LANE, JUPITER, FL. 33458
PHONE: (561) 746-5493 - FAX: (561) 575-1826

SCALE: NA
DATE: 01/28/18
DRAWING #: 18-052 SM
SHEET 1 OF 11

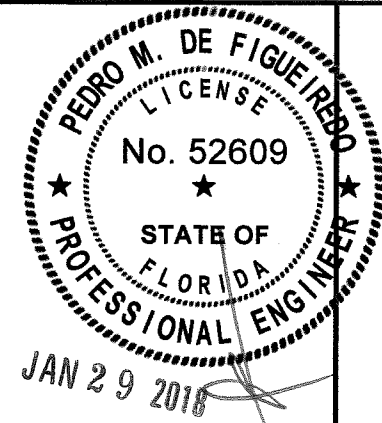
DOORS SAMPLE ELEVATIONS WITH OPERABLE AND FIXED PANELS AND POCKET CONFIGURATIONS



P- POCKET
X- OPERABLE PANEL
O- FIXED PANEL
FW- FRAME WIDTH
DLO- DAYLIGHT OPENING PANEL
****** (SEE NOTE 2)

NOTES:

- 1- DOOR CAN BE CONFIGURED WITH AS MANY PANELS AS THE TWO, THREE, FOUR OR FIVE TRACK SYSTEM CAN FIT, LIMITED TO THE MAXIMUM TESTED FRAME WIDTH X 1.5 WITH LIMITATIONS AS BELOW:
- 2- MAXIMUM FW= $312 \times 1.5 = 468"$ FOR FH $\leq 102 \frac{1}{2}"$
MAXIMUM FW= $288 \times 1.5 = 432"$ FOR $102 \frac{1}{2}" \leq \text{FH} \leq 120"$
- 3- MAXIMUM DLO= $46 \frac{5}{8}" \times 94 \frac{1}{16}"$ FOR $52" \times 100 \frac{1}{2}"$ NOMINAL PANELS
MAXIMUM DLO= $42 \frac{5}{8}" \times 111 \frac{9}{16}"$ FOR $48" \times 117"$ NOMINAL PANELS



ENGINEERING SERVICES - CA 32459
9715 W. BROWARD BLVD.
PLANTATION, FL 33324
PPMF@AOL.COM

ENGINEER SEAL
PEDRO DE FIGUEIREDO
PE 52609



PRODUCT:
SLIDING GLASS DOOR
SMALL MISSILE IMPACT RATED

MANUFACTURER:

SE SOUTHEASTERN
Manufacturers of Impact Resistant Sliding Glass Doors

1505 COMMERCE LANE, JUPITER, FL. 33458
PHONE: (561) 746-5493 - FAX: (561) 575-1826

PRODUCT REVISED
as complying with the Florida
funding Code
Acceptance No 18-0201-13
Expiration Date 8/17/22
A. L. Chang
Miami Trade Product Control

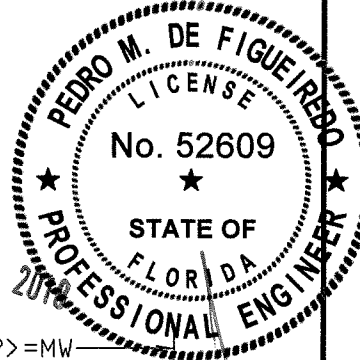
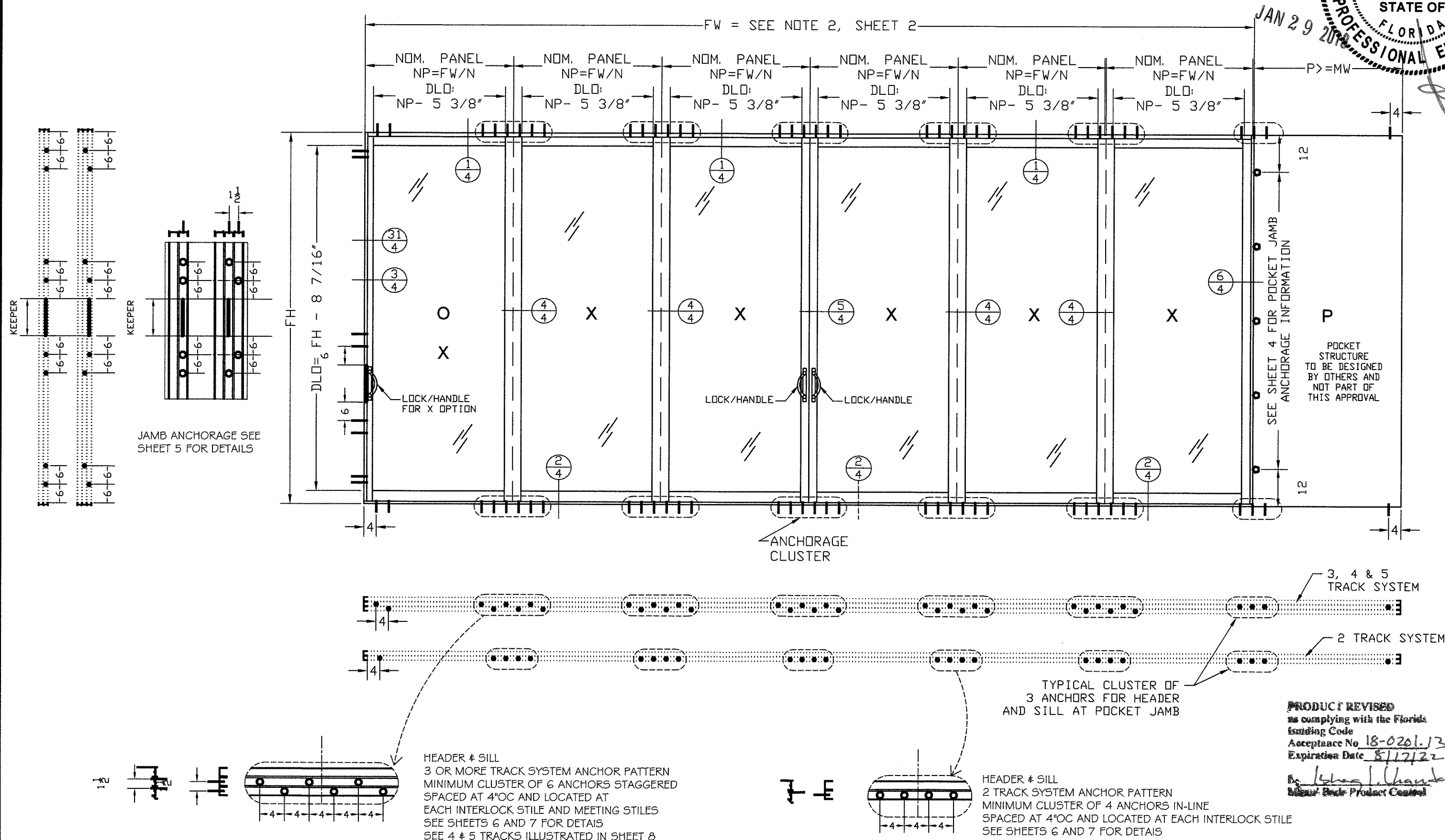
SCALE:
NA

DATE:
01/28/18

DRAWING #
18-052 SM

SHEET
2 OF 11

TYPICAL ELEVATION AND CROSS SECTION LOCATOR

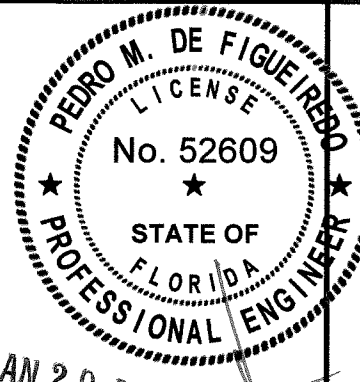
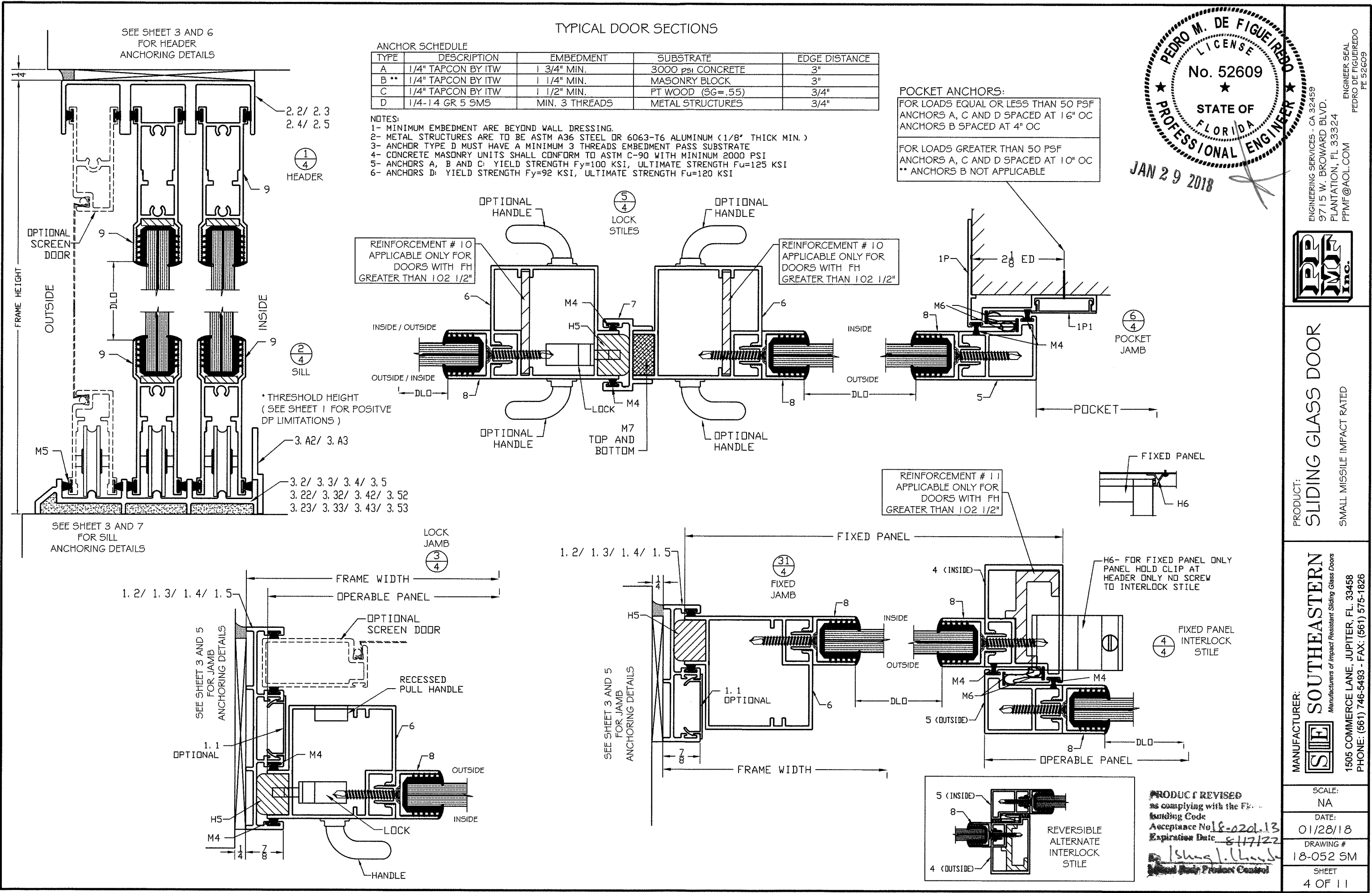


PRODUCT: SLIDING GLASS DOOR
SMALL MISSILE IMPACT RATED

MANUFACTURER: SOUTHEASTERN
Manufacturers of Impact Resistant Sliding Glass Doors
1505 COMMERCE LANE, JUPITER, FL. 33458
PHONE: (561) 746-5493 - FAX: (561) 575-1826

SCALE:	NA
DATE:	01/28/18
DRAWING #	18-052 SM
SHEET	3 OF 11

PRODUCT REVISED
to comply with the Florida
Building Code
Acceptance No. 18-0201.13
Expiration Date 8/17/22
By: [Signature]
Senior Design Product Control



PRODUCT: SLIDING GLASS DOOR

SMALL MISSILE IMPACT RATED

MANUFACTURER: SOUTHEASTERN

Manufacturers of Impact Resistant Sliding Glass Doors

1505 COMMERCE LANE, JUPITER, FL. 33458

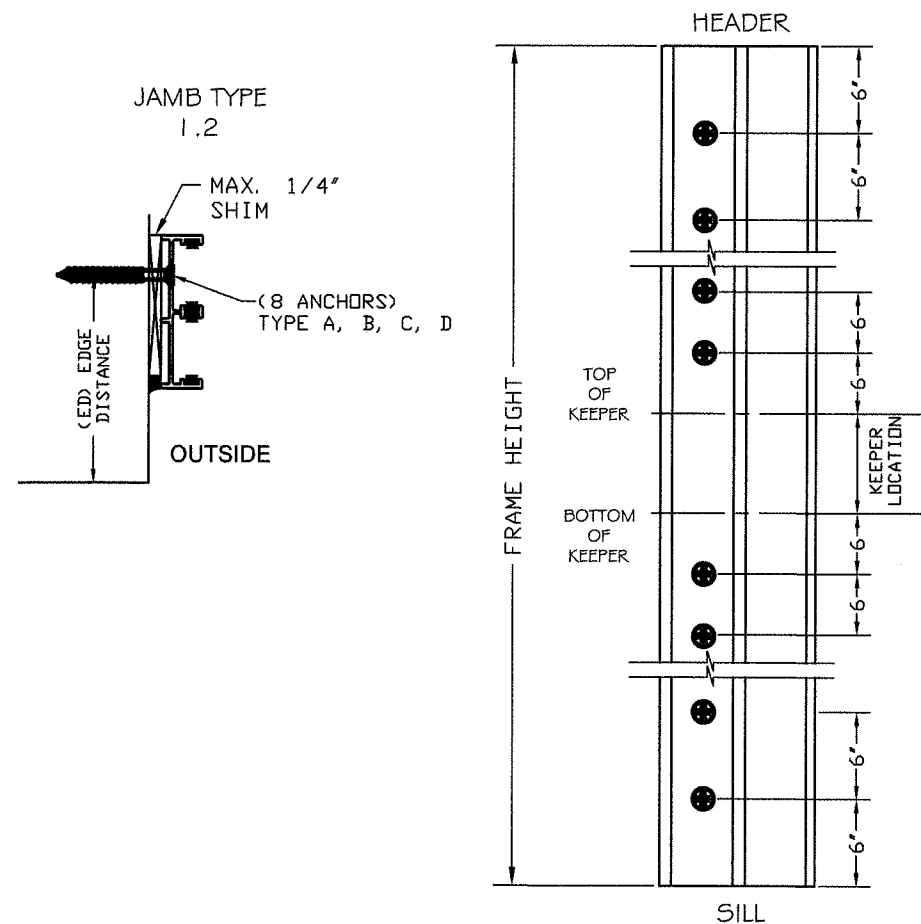
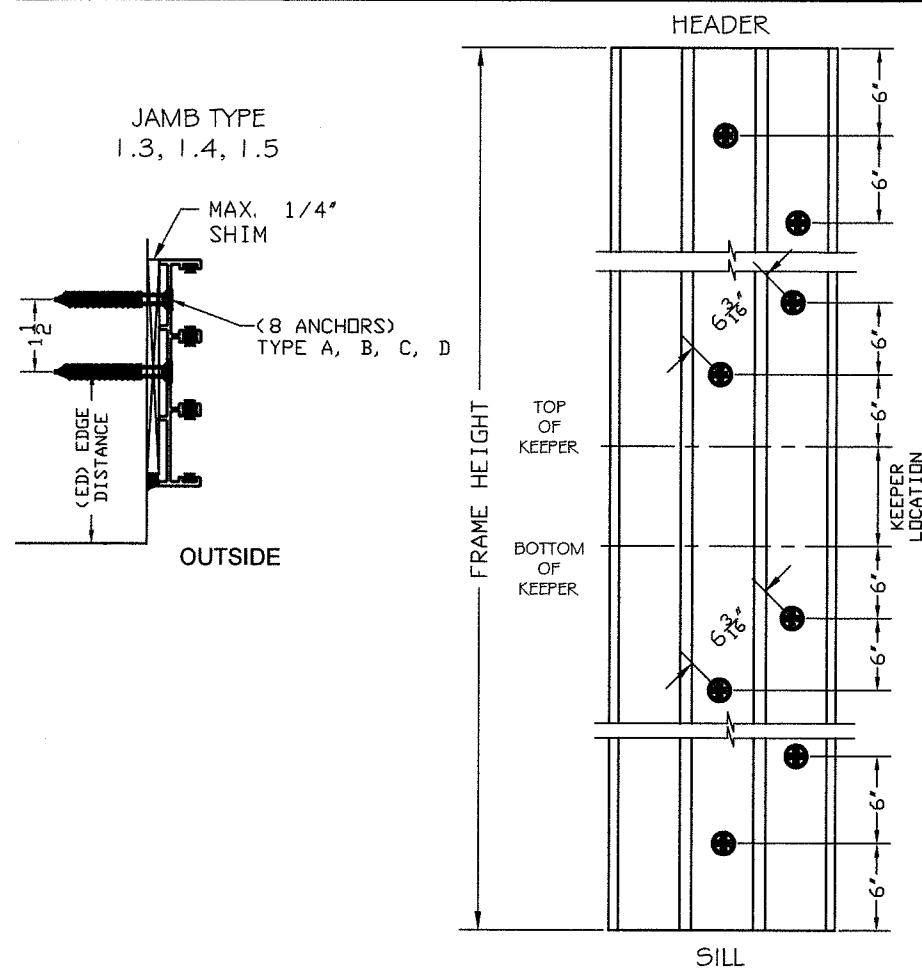
PHONE: (561) 746-5493 - FAX: (561) 575-1826

SCALE: NA

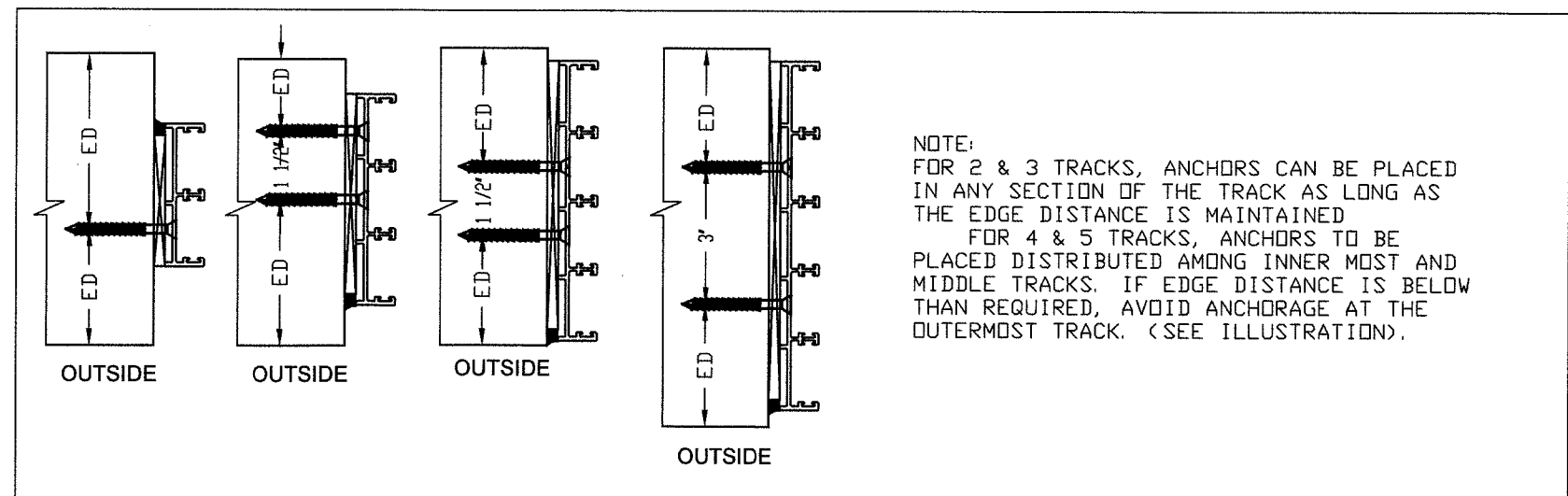
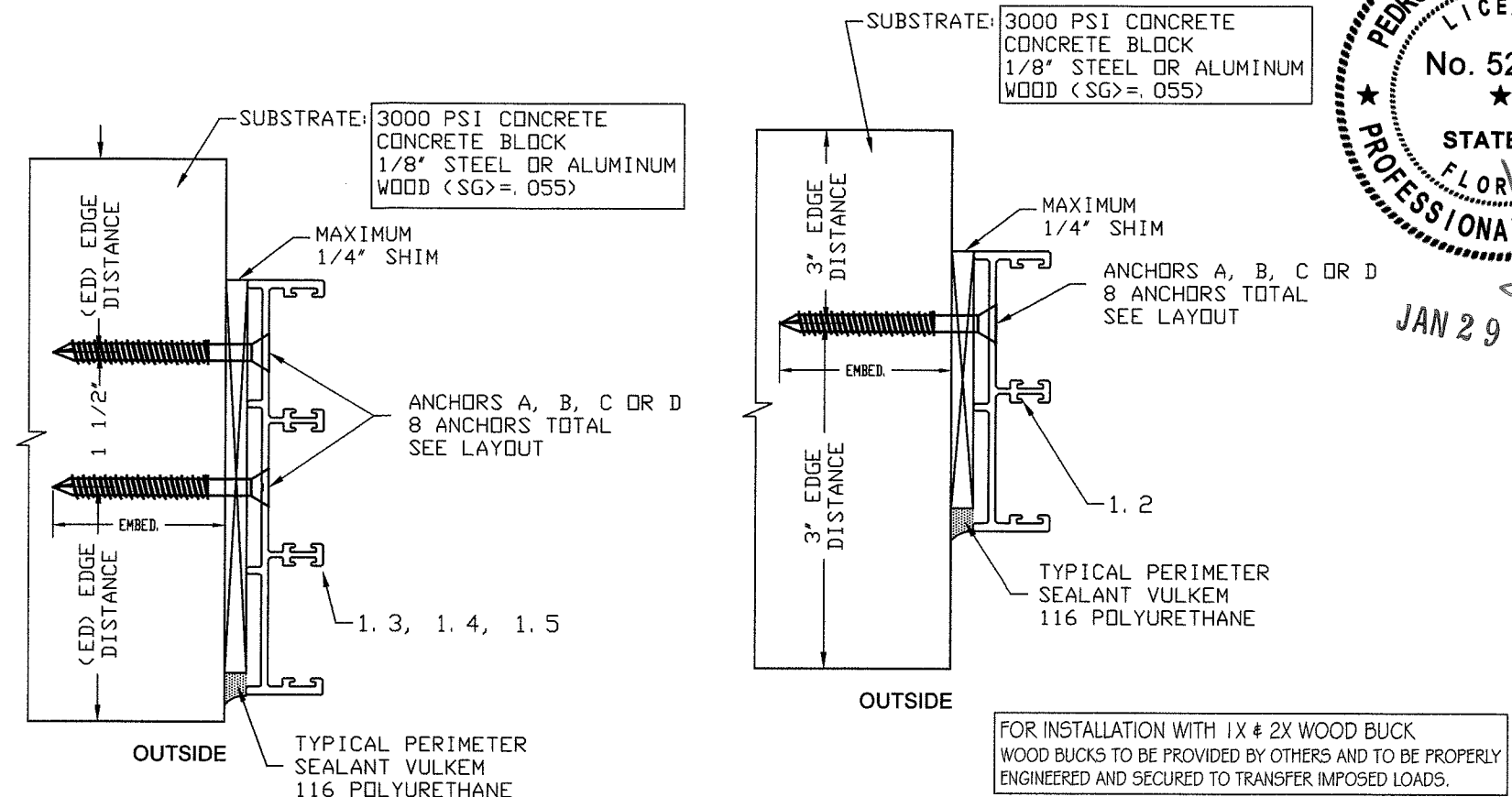
DATE: 01/28/18

DRAWING #: 18-052 SM

SHEET 4 OF 11



JAMB FRAMING ANCHORAGE DETAILS

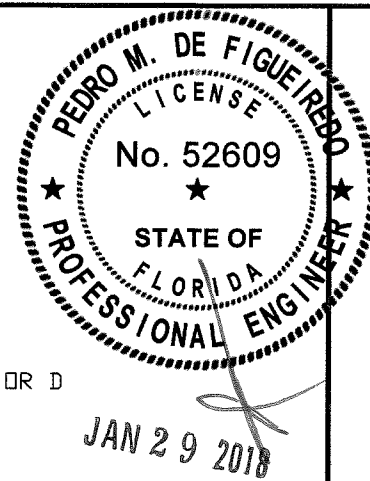


ANCHOR SCHEDULE

TYPE	DESCRIPTION	EMBEDMENT	SUBSTRATE	EDGE DISTANCE
A	1/4" TAPCON BY ITW	1 3/4" MIN.	3000 PSI CONCRETE	3"
B	1/4" TAPCON BY ITW	1 1/4" MIN.	MASONRY BLOCK	3"
C	1/4" TAPCON BY ITW	1 1/2" MIN.	PT WOOD (SG=.55)	3/4"
D	1/4-14 GR 5 SMS	MIN. 3 THREADS	METAL STRUCTURES	3/4"

NOTES:

- 1- MINIMUM EMBEDMENT ARE BEYOND WALL DRESSING.
- 2- METAL STRUCTURES ARE TO BE ASTM A36 STEEL OR 6063-T6 ALUMINUM (MIN. 1/8" THICK)
- 3- ANCHOR TYPE D MUST HAVE A MINIMUM 3 THREADS EMBEDMENT PASS SUBSTRATE
- 4- CONCRETE MASONRY UNITS SHALL CONFORM TO ASTM C-90 WITH MINIMUM 2000 PSI
- 5- ANCHORS A, B AND C: YIELD STRENGTH $F_y = 100$ KSI, ULTIMATE STRENGTH $F_u = 125$ KSI
- 6- ANCHORS D: YIELD STRENGTH $F_y = 92$ KSI, ULTIMATE STRENGTH $F_u = 120$ KSI



PRODUCT: SLIDING GLASS DOOR

SMALL MISSILE IMPACT RATED

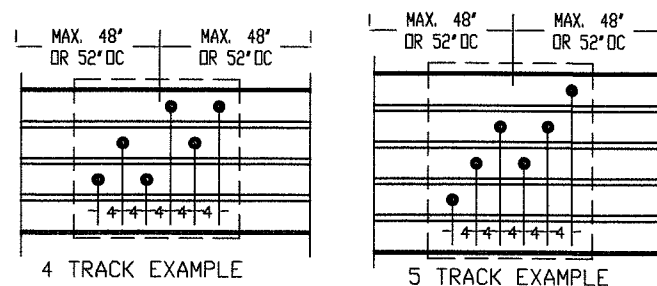
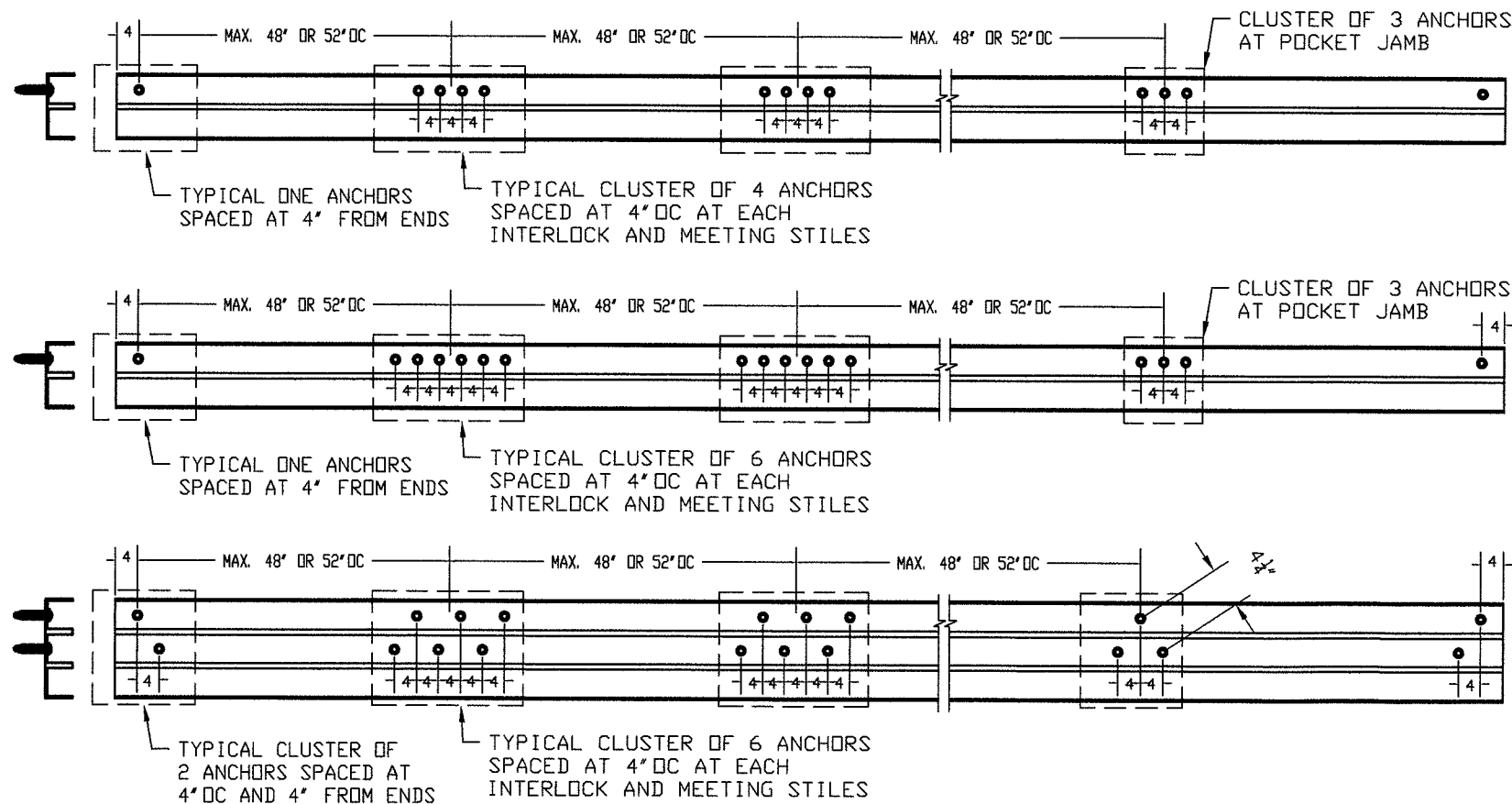
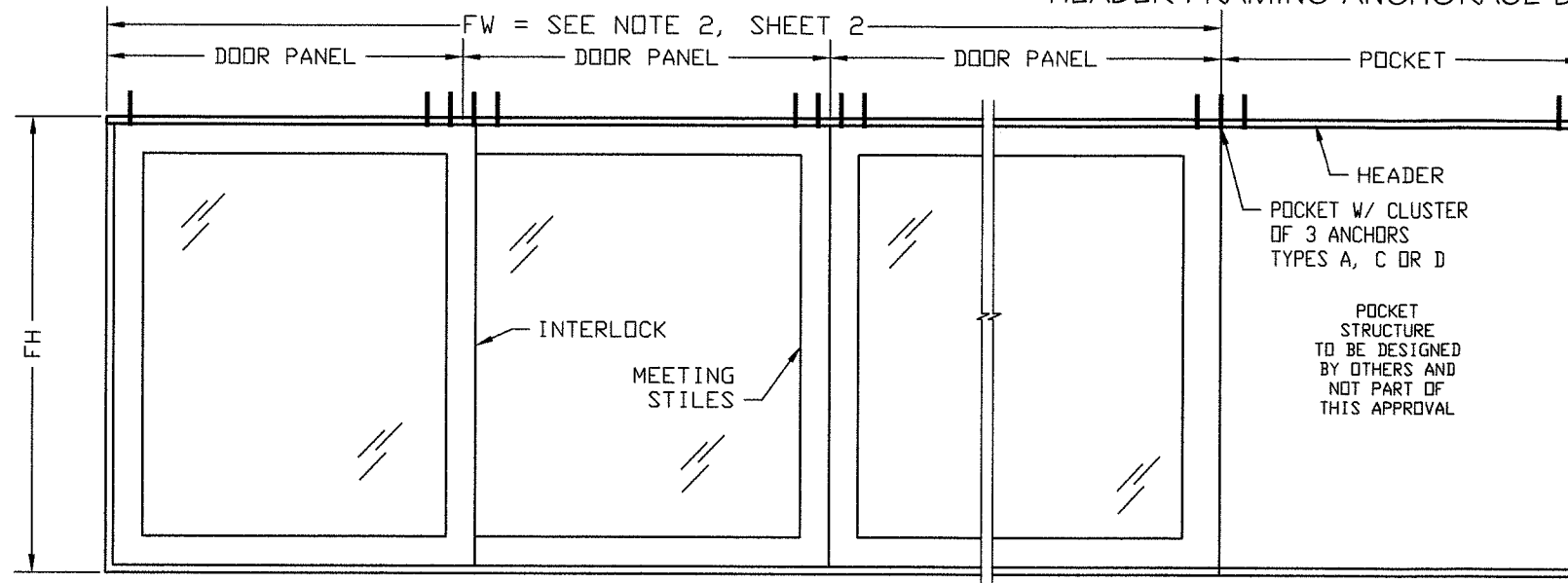
MANUFACTURER: SOUTHEASTERN

Manufacturers of Impact Resistant Sliding Glass Doors
1505 COMMERCE LANE, JUPITER, FL. 33458
PHONE: (561) 748-5493 - FAX: (561) 575-1826

SCALE: NA
DATE: 01/28/18
DRAWING #: 18-052 SM
SHEET 5 OF 11

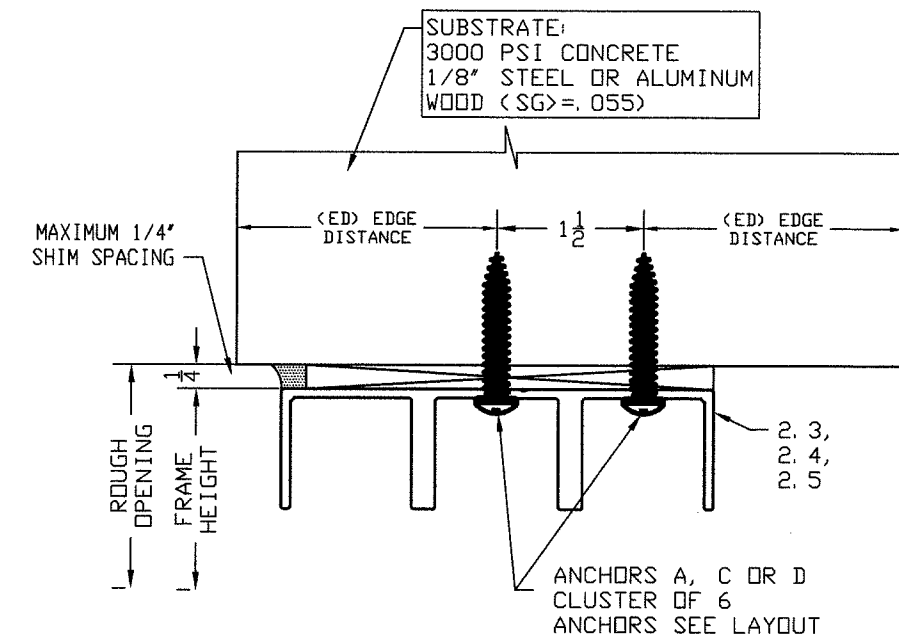
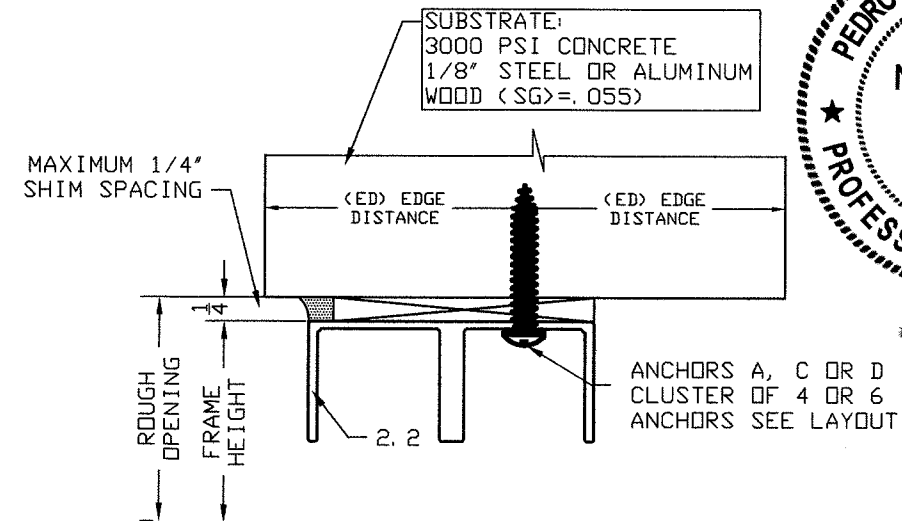
PRODUCT REVISED
to comply with the Florida
Building Code
Acceptance No. 18-0201-13
Expiration Date 8/17/22
By: [Signature]
Initial Date, Product Control

HEADER FRAMING ANCHORAGE DETAILS



NOTE: FOR 2 & 3 TRACKS, ANCHORS CAN BE PLACED IN ANY SECTION OF THE TRACK AS LONG AS THE EDGE DISTANCE IS MAINTAINED

FOR 4 & 5 TRACKS, ANCHORS TO BE PLACED DISTRIBUTED AMONG INNER MOST AND MIDDLE TRACKS. IF EDGE DISTANCE IS BELOW THAN REQUIRED, AVOID ANCHORAGE AT THE OUTERMOST TRACK. (SEE ILLUSTRATION).



FOR INSTALLATION WITH 1X & 2X WOOD BUCK
WOOD BUCKS TO BE PROVIDED BY OTHERS AND TO BE PROPERLY
ENGINEERED AND SECURED TO TRANSFER IMPOSED LOADS.

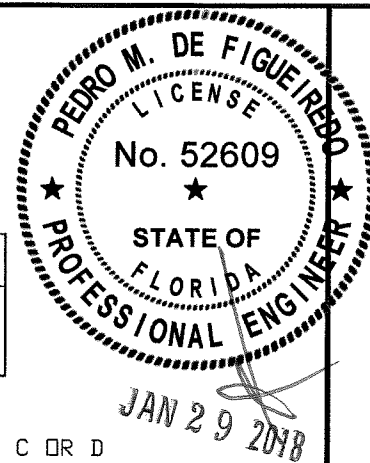
3 TRACK SYSTEMS
ANCHORS TYPE
A, C OR D
(SEE NOTE FOR 4 & 5 TRACKS)

ANCHOR SCHEDULE

TYPE	DESCRIPTION	EMBEDMENT	SUBSTRATE	ED
A	1/4" TAPCON BY ITW	1 3/4" MIN.	3000 psi CONCRETE	3"
C	1/4" TAPCON BY ITW	1 1/2" MIN.	PT WOOD (SG = .55)	3/4"
D	1/4-14 GR 5 SMS	MIN. 3 THREADS	METAL STRUCTURES	3/4"

NOTES:

- 1- MINIMUM EMBEDMENT ARE BEYOND WALL DRESSING.
- 2- METAL STRUCTURES ARE TO BE ASTM A36 STEEL OR 6063-T6 ALUMINUM (MIN. 1/8" THICK)
- 3- ANCHOR TYPE D MUST HAVE A MINIMUM 3 THREADS EMBEDMENT PASS SUBSTRATE
- 4- ANCHORS A AND C: YIELD STRENGTH $F_y = 100$ KSI, ULTIMATE STRENGTH $F_u = 125$ KSI
- 5- ANCHORS D: YIELD STRENGTH $F_y = 92$ KSI, ULTIMATE STRENGTH $F_u = 120$ KSI



ENGINEERING SERVICES - CA 32459
9715 W. BROWARD BLVD.
PLANTATION, FL 33324
PPMF@AOL.COM
ENGINEER SEAL
PEDRO DE FIGUEIREDO
PE 52609



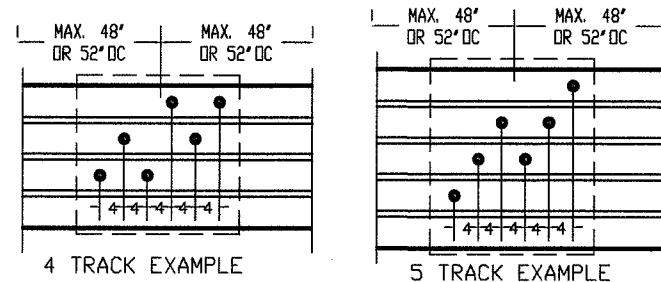
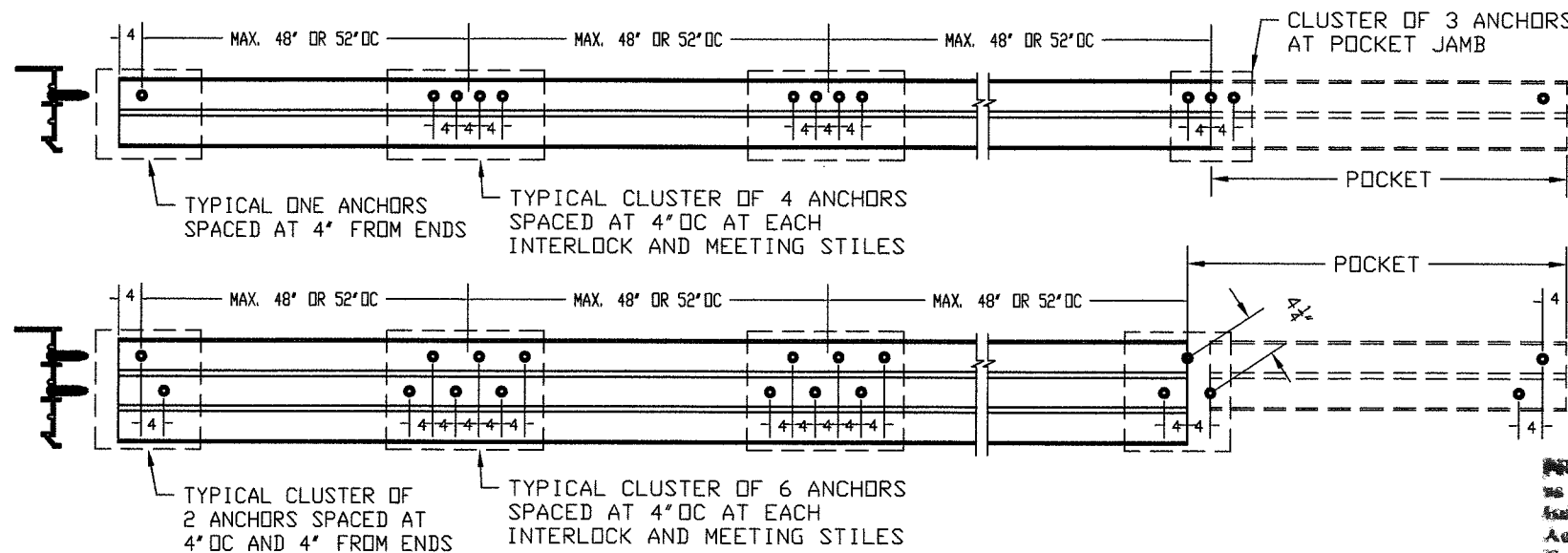
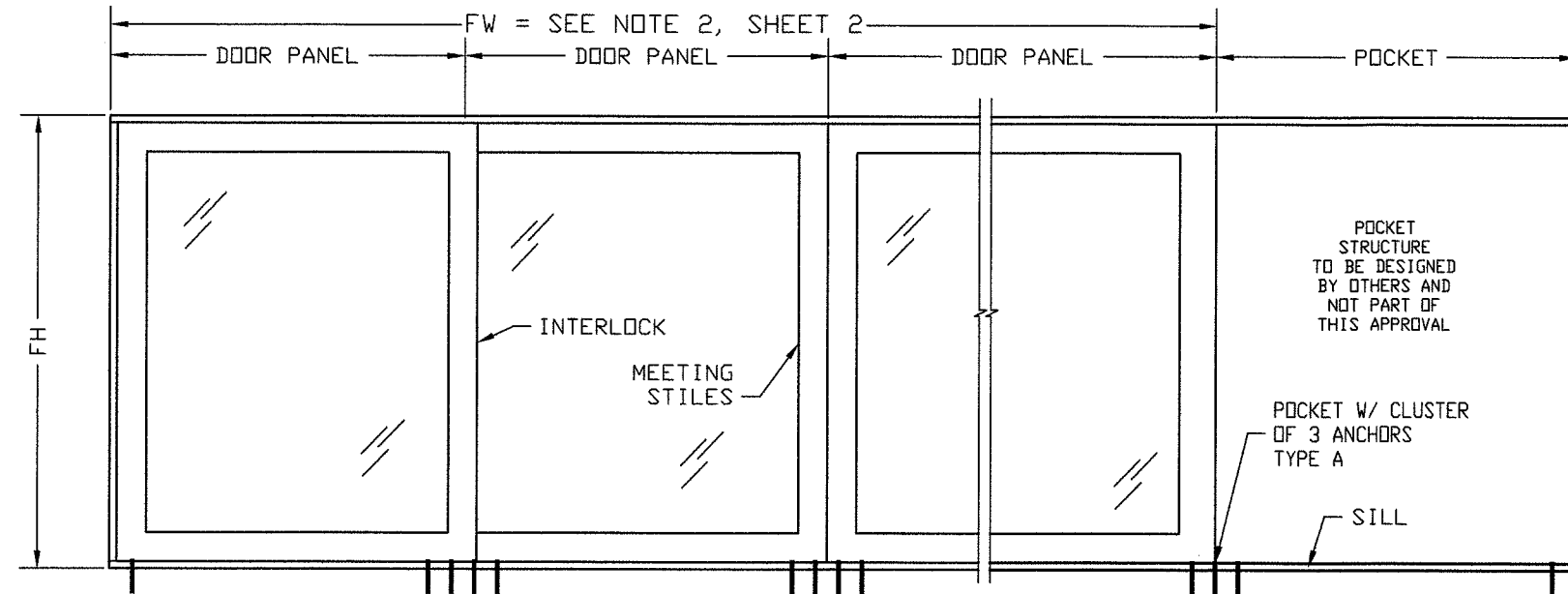
PRODUCT:
SLIDING GLASS DOOR
SMALL MISSILE IMPACT RATED

MANUFACTURER:
SOUTHEASTERN
Manufacturers of Impact Resistant Sliding Glass Doors
1505 COMMERCE LANE, JUPITER, FL 33458
PHONE: (561) 746-5493 - FAX: (561) 575-1826

SCALE:
NA
DATE:
01/28/18
DRAWING #
18-052 SM
SHEET
6 OF 11

PRODUCT REVISED
as complying with the Florida
Building Code
Acceptance No. 18-02613
Expiration Date 8/17/22
By: [Signature]
Min. Prod. Control

SILL FRAMING ANCHORAGE DETAILS



NOTE: FOR 2 & 3 TRACKS, ANCHORS CAN BE PLACED IN ANY SECTION OF THE TRACK AS LONG AS THE EDGE DISTANCE IS MAINTAINED.
FOR 4 & 5 TRACKS, ANCHORS TO BE PLACED DISTRIBUTED AMONG INNER MOST AND MIDDLE TRACKS. IF EDGE DISTANCE IS BELOW THAN REQUIRED, AVOID ANCHORAGE AT THE OUTERMOST TRACK. (SEE ILLUSTRATION).

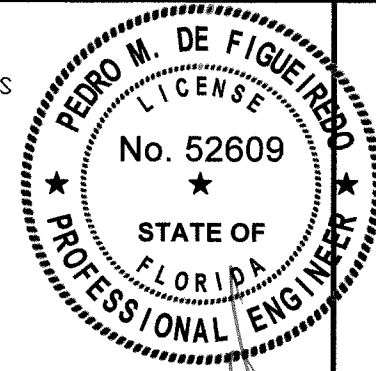
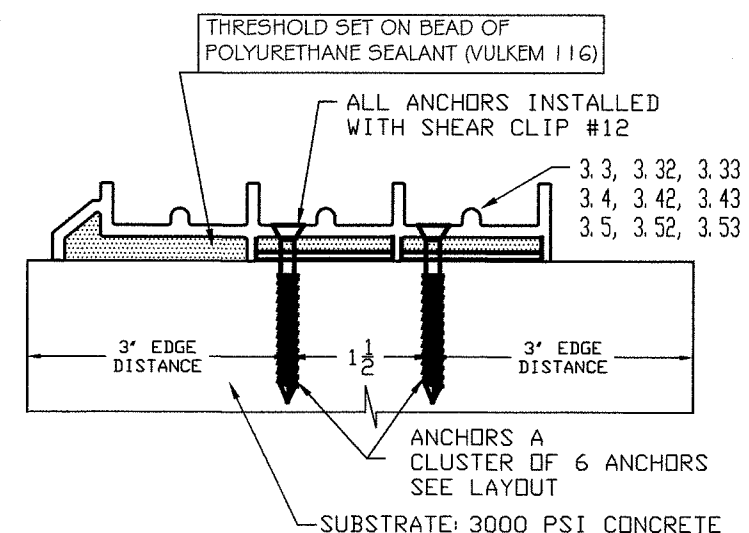
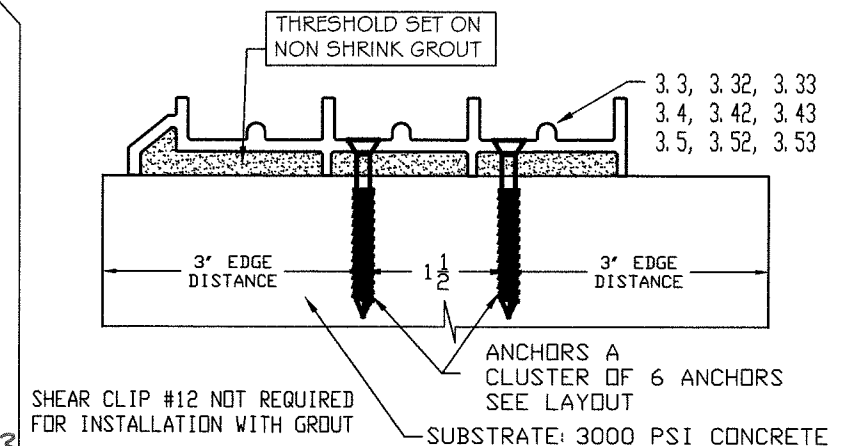
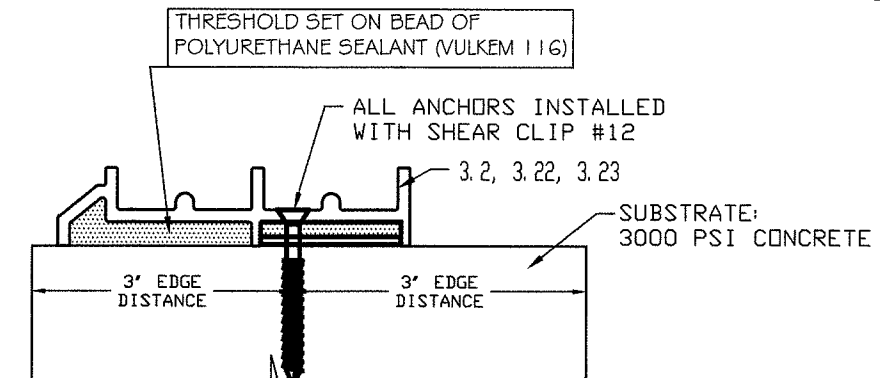
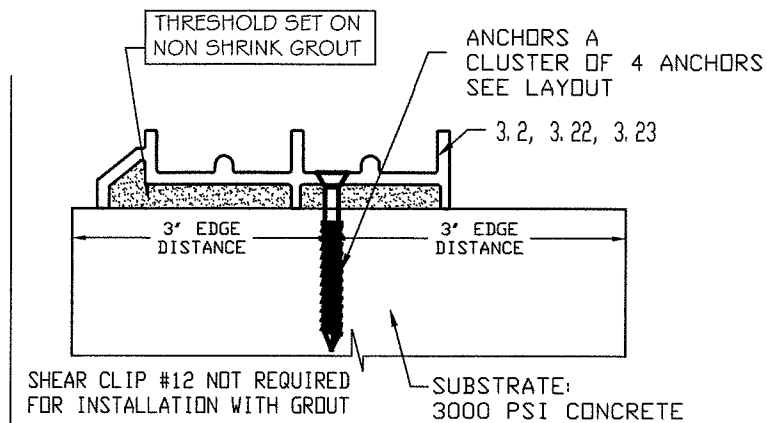
ANCHOR SCHEDULE

TYPE	DESCRIPTION	EMBEDMENT	SUBSTRATE	ED
A	1/4" TAPCON BY ITW	1 3/4" MIN.	3000 psi CONCRETE	3"

NOTES:

- 1- MINIMUM EMBEDMENT ARE BEYOND WALL DRESSING.
- 2- ANCHORS A: YIELD STRENGTH $F_y = 100$ KSI, ULTIMATE STRENGTH $F_u = 125$ KSI

FOR INSTALLATION WITH 1X & 2X WOOD BUCK
WOOD BUCKS TO BE PROVIDED BY OTHERS AND TO BE PROPERLY
ENGINEERED AND SECURED TO TRANSFER IMPOSED LOADS.



JAN 29 2018



PRODUCT: SLIDING GLASS DOOR

SMALL MISSILE IMPACT RATED

MANUFACTURER: SOUTHEASTERN

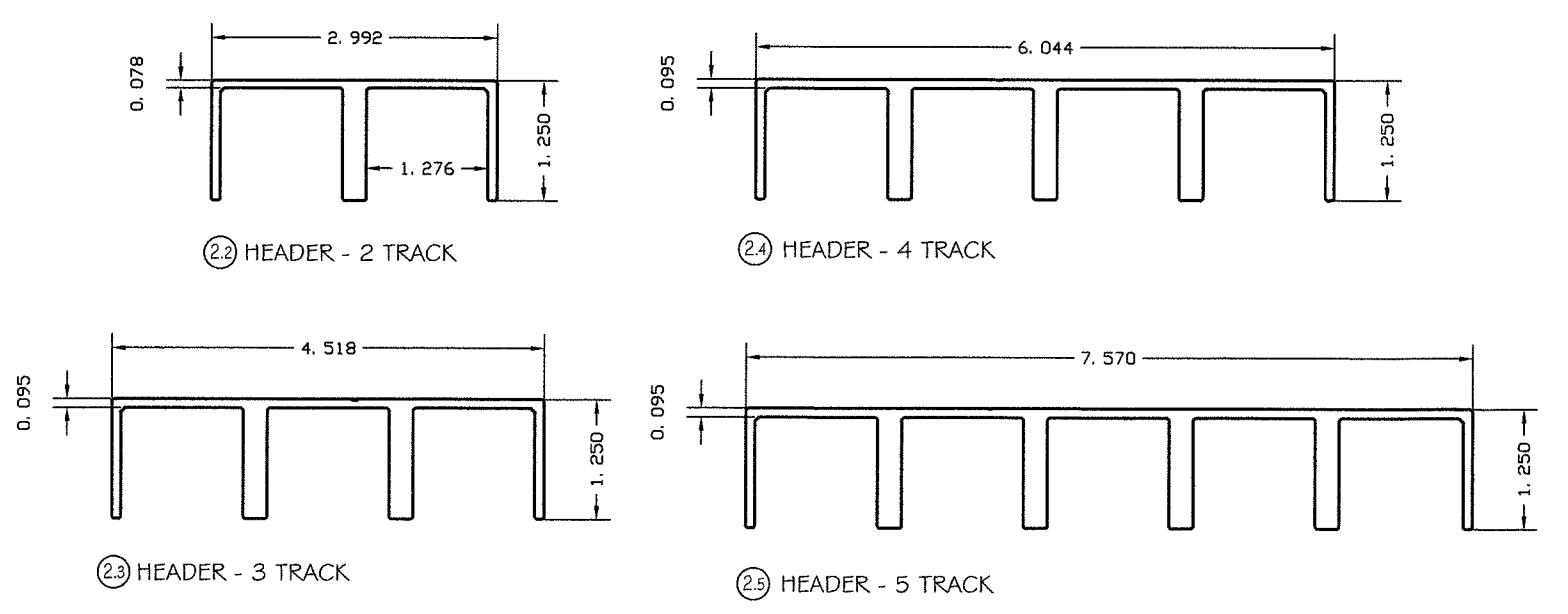
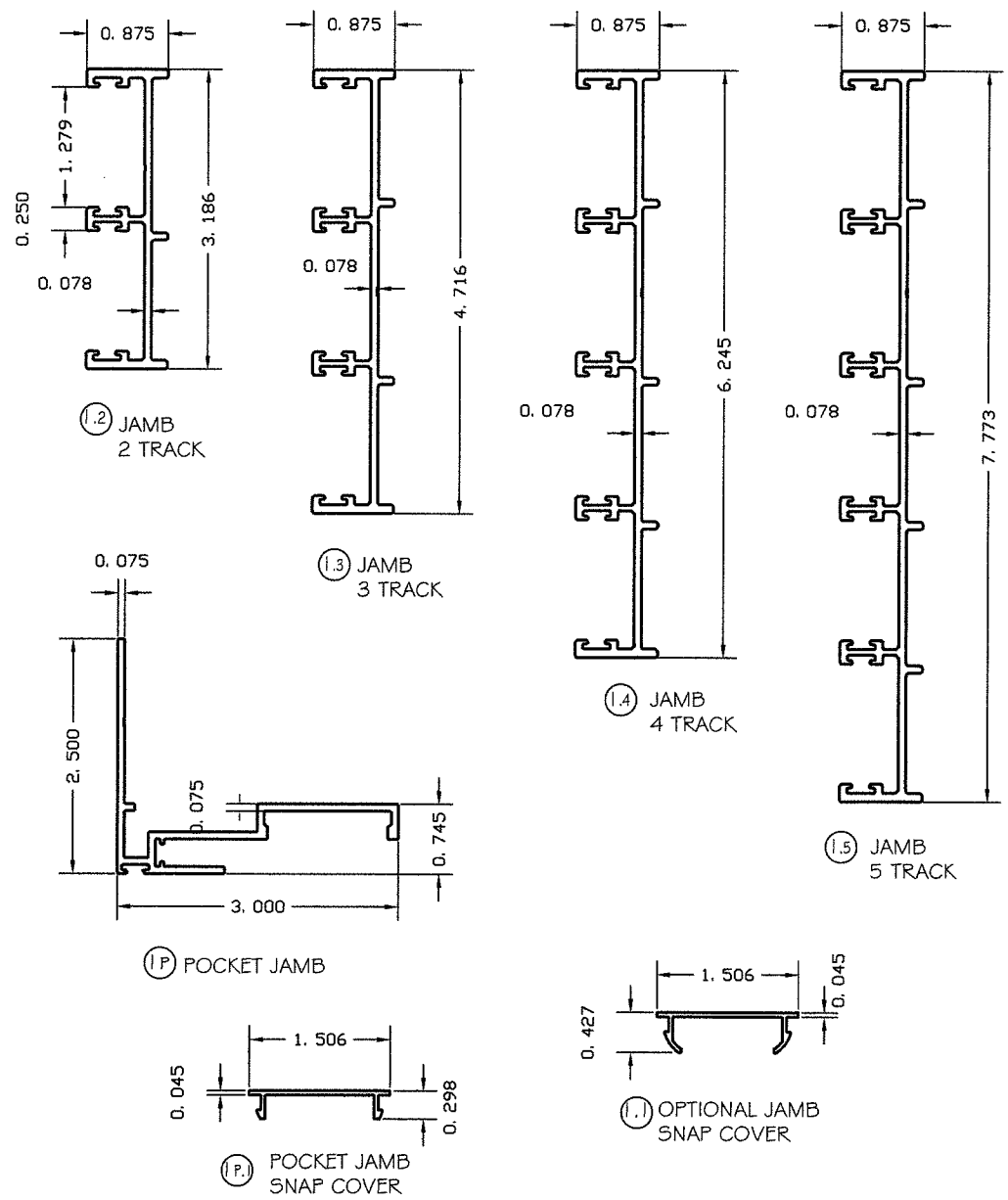
Manufacturers of Impact Resistant Sliding Glass Doors
1505 COMMERCE LANE, JUPITER, FL 33458
PHONE: (561) 746-5493 - FAX: (561) 575-1826

SCALE: NA

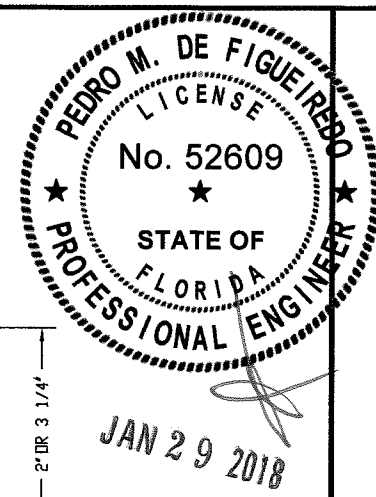
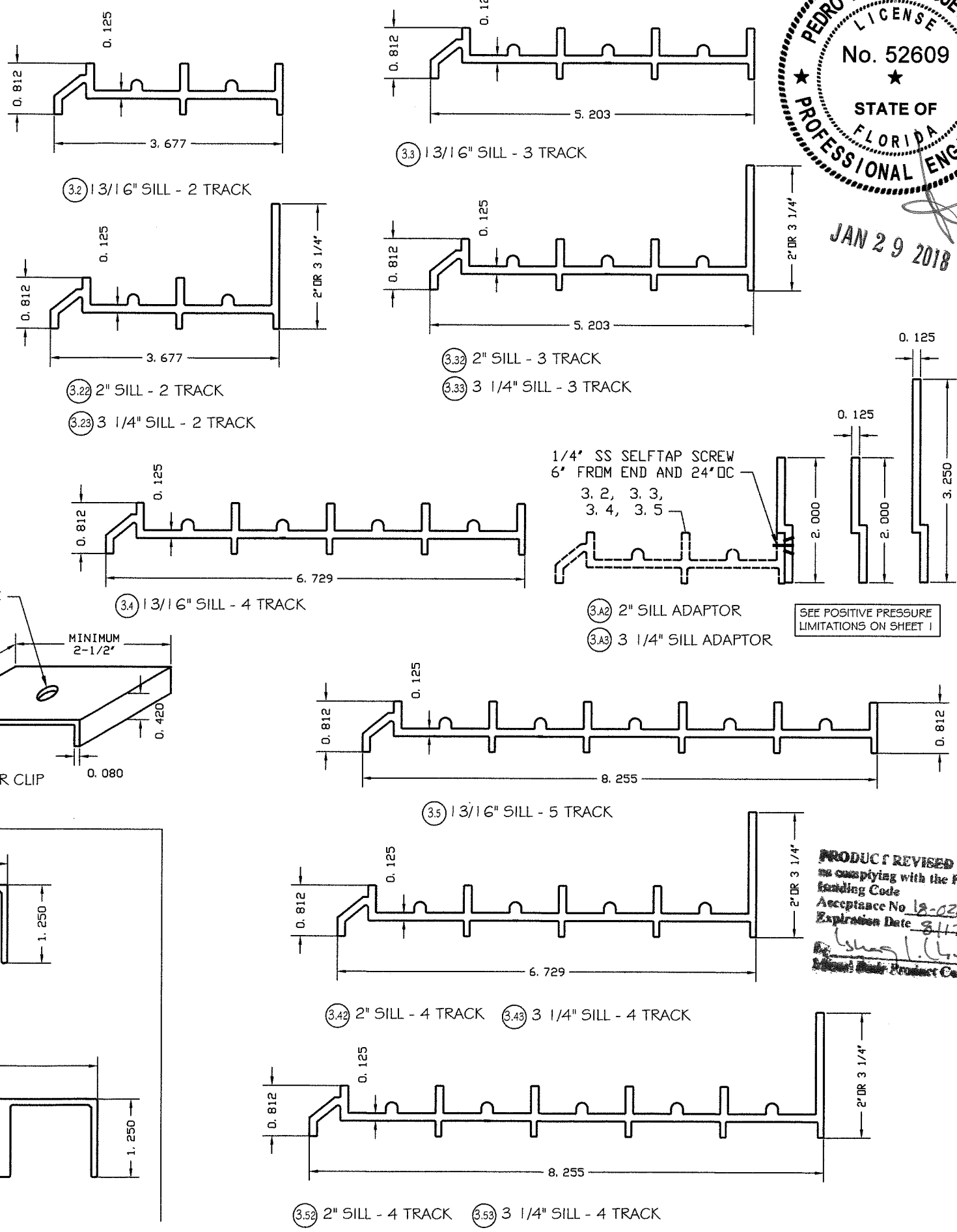
DATE: 01/28/18

DRAWING # 18-052 SM

SHEET 7 OF 11



FRAME COMPONENTS

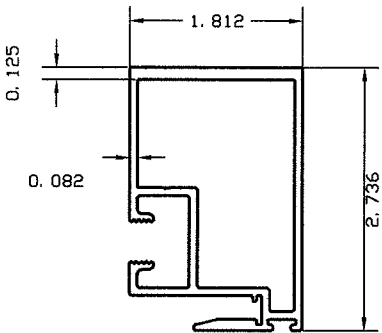


PRODUCT: SLIDING GLASS DOOR
SMALL MISSILE IMPACT RATED

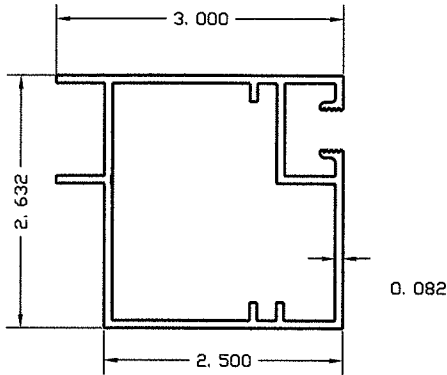
MANUFACTURER: SOUTHEASTERN
Manufacturers of Impact Resistant Sliding Glass Doors
1505 COMMERCE LANE, JUPITER, FL 33458
PHONE: (561) 746-5493 - FAX: (561) 575-1826

SCALE: NA
DATE: 01/28/18
DRAWING #: 18-052 SM
SHEET 8 OF 11

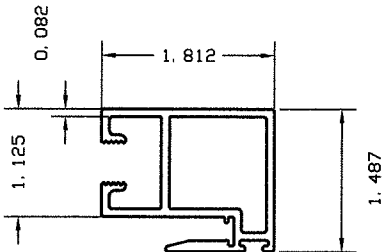
PANEL COMPONENTS



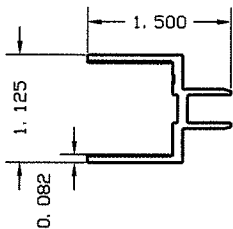
④ ATLAS INTERLOCK



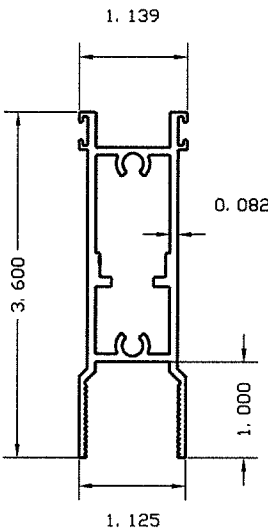
⑥ ATLAS DOOR END RAIL



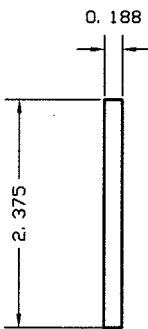
⑤ ATLAS NARROW INTERLOCK STILE



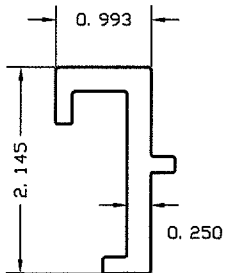
⑧ GLAZING ADAPTER



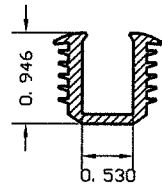
⑨ ATLAS DOOR TOP / BOTTOM RAIL



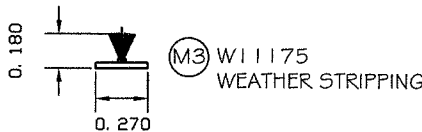
⑩ DOOR END RAIL REINFORCEMENT
LENGT=PH-2 1/16



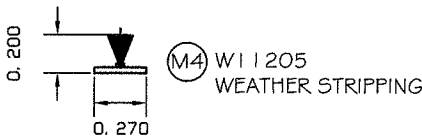
⑪ INTERLOCK REINFORCEMENT
LENGT=PH-2 1/16



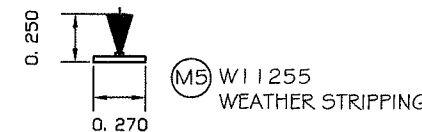
(M1) 1/2" GLAZING CHANNEL



(M3) W11175 WEATHER STRIPPING



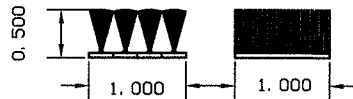
(M4) W11205 WEATHER STRIPPING



(M5) W11255 WEATHER STRIPPING

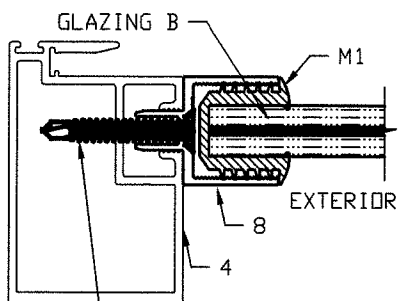
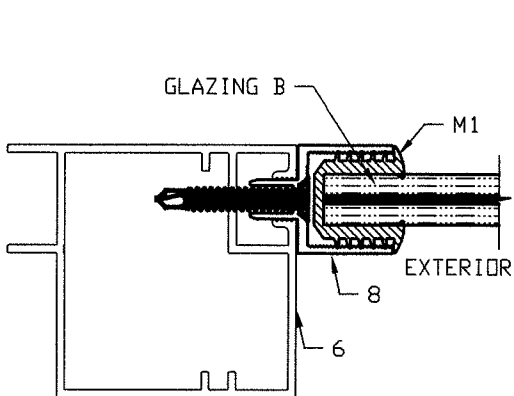


(M6) BULB VINYL

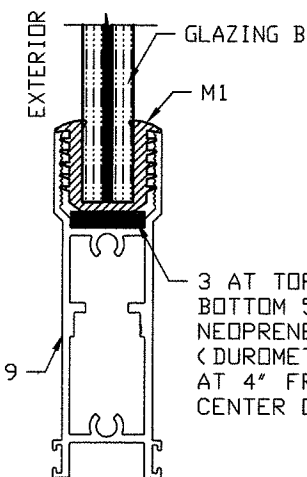


(M7) 1"X1" DUST PLUG

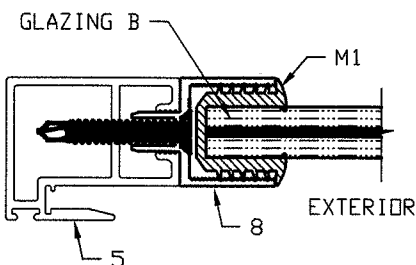
GLAZING CONFIGURATIONS



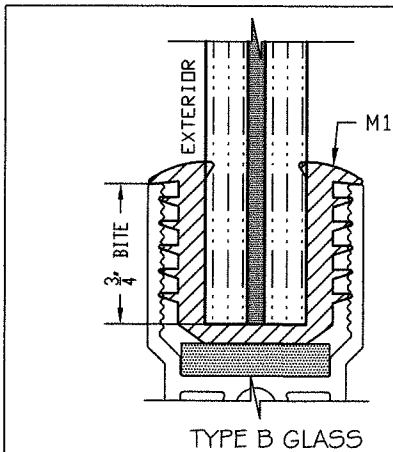
TYPICAL GLAZING ADAPTOR (#8)
ATTACHMENT TO VERTICAL RAILS WITH
#10 X 1 1/2" SS STFH SCREWS
LOCATED 1" FROM THE ENDS AND 24" OC



3 AT TOP AND 3 AT
BOTTOM 5/32 X 3/4" X 5"
NEOPRENE SETTING BLOCK
(DUROMETER 85) LOCATED
AT 4" FROM ENDS AND AT
CENTER OF EACH PANEL



PRODUCT REVISED
to comply with the Florida
Building Code
Acceptance No. 18-0201.13
Expiration Date 8/17/22
By [Signature] / [Signature]
Product Control



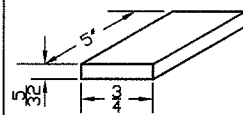
"B" GLAZING

PRESSURE: +65 PSF, -75 PSF
MAXIMUM DLO: 46 5/8" X 94 1/16"

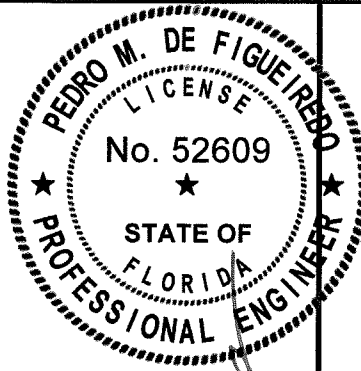
PRESSURE: +50 PSF, -50 PSF
MAXIMUM DLO: 42 5/8" X 111 9/16"

TYPE B GLASS: SMALL MISSILE IMPACT

9/16" LAMINATED HS CONFIGURED:
EXTERIOR LITE: 1/4" HS
INTERLAYER: 0.035" SENTRYGLAS INTERLAYER BY KURARAY
INTERIOR LITE: 1/4" HS



SETTING BLOCK: 3 PER PANEL
NEOPRENE, DUROMETER 85 AT 4" FROM ENDS AND AT CENTER OF EACH PANEL



PRODUCT: SLIDING GLASS DOOR

MANUFACTURER: SOUTHEASTERN
Manufacturers of Impact Resistant Sliding Glass Doors

SCALE: NA

DATE: 01/28/18

DRAWING # 18-052 SM

SHEET 9 OF 11

1505 COMMERCE LANE, JUPITER, FL 33458
PHONE: (561) 746-5493 - FAX: (561) 575-1826

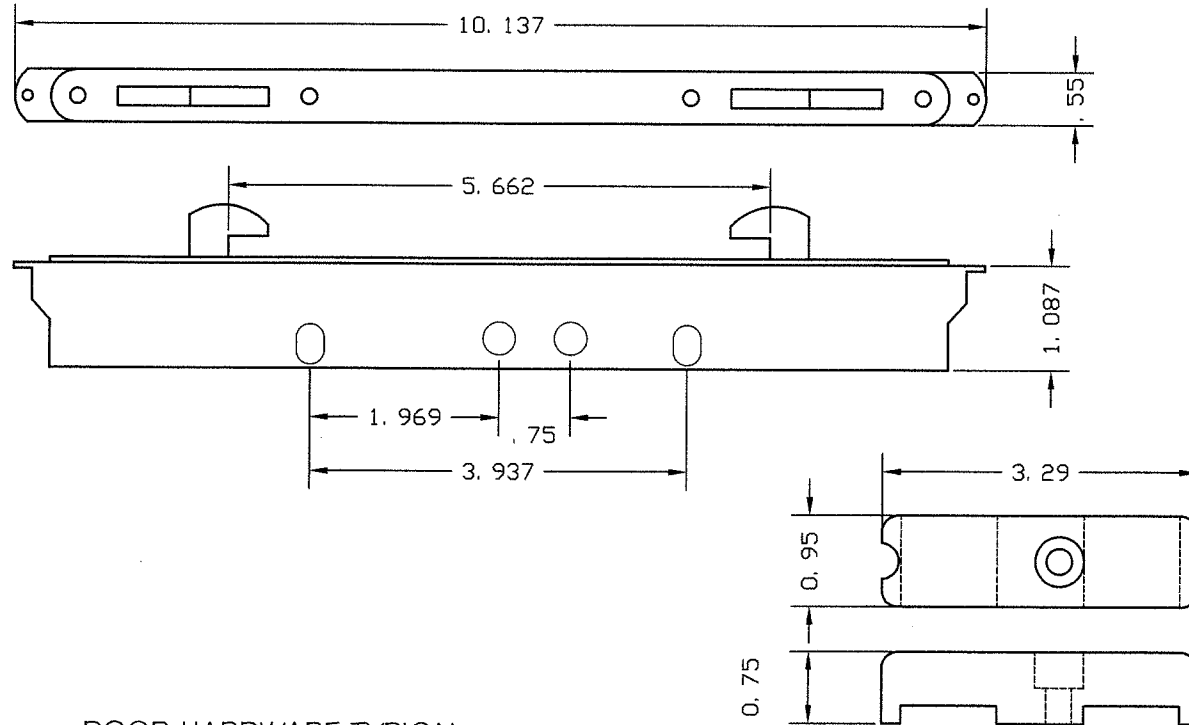
SMALL MISSILE IMPACT RATED

ENGINEERING SERVICES - CA 32459
9715 W. BROWARD BLVD.
PLANTATION, FL 33324
PPMF@AOL.COM
ENGINEER SEAL
PEDRO DE FIGUEIREDO
PE 52609

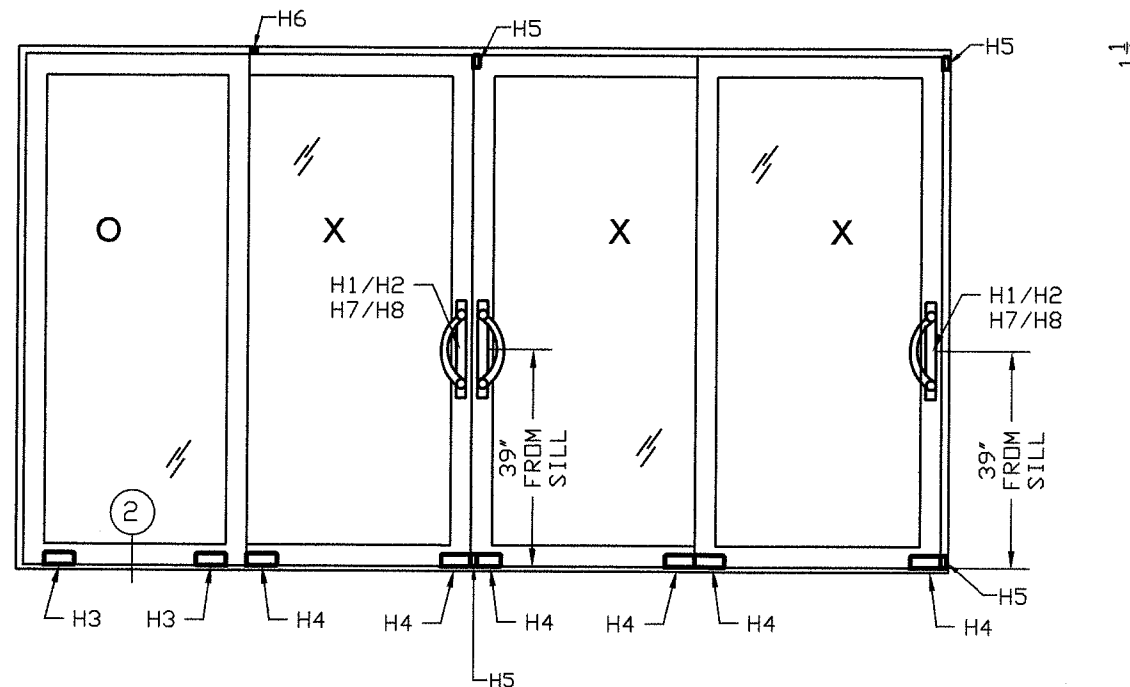
PANEL HARDWARE

(H1) 2 POINT DEAD LOCK

1 MULTIPoint MORTISE LOCK PER LOCK MEETING STILE
HARDWARE SUPPLIER: AMESBURY
PART #2815-84
ATTACHED TO THE DOOR WITH (2) #6X 1/4" SS FLAT HEAD SCREWS.



DOOR HARDWARE TYPICAL

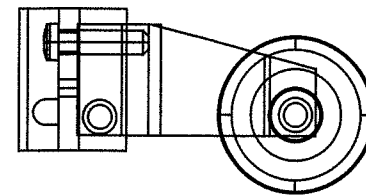
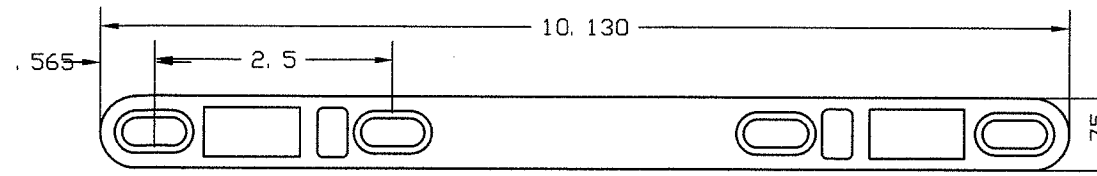


H5- ACTIVE DOOR STILE BUMPER
2 PER EACH LOCKING STILE SECURED TO THE TOP AND BOTTOM OF THE VERTICAL LOCKING STILE WITH (1) 1/4" SMS

H6- 1/8-1X1 FIXED PANEL HOLD CLIP
1 PER EACH FIXED PANEL SECURED ONLY TO THE TOP HEADER WITH (1) #8 SMS.

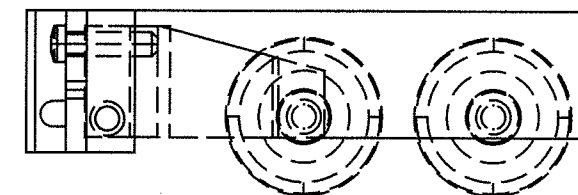
(H2) 2 POINT DEAD LOCK STRIKE PLATE

1 KEEPER PER MEETING STILE OR JAMB
HARDWARE SUPPLIER: AMESBURY
PART #2470-84
ATTACHED AT JAMB OR ASTRAGAL RAIL
USING FOUR W/ #10-16X 1-1/2" PHSMS.



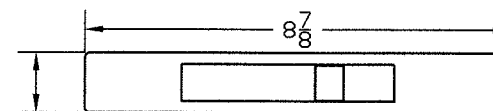
(H3) SINGLE WHEEL ASSEMBLY

2 PER FIXED DOOR PANEL
HARDWARE SUPPLIER: AMESBURY
PART #1966-7000-12
ADJUSTABLE 1 11/16" DIAMETER NYLON ROLLER
ASSEMBLY WITH ALUMINUM HOUSING ATTACHED TO
THE BOTTOM RAIL USING ONE 1/4"X1 SS ROD.

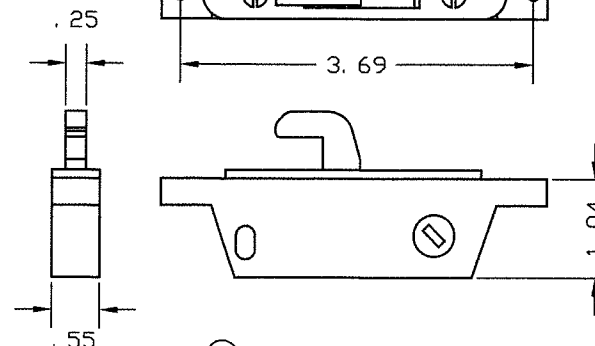
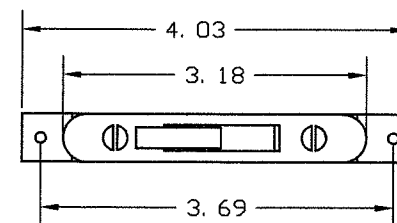


(H4) TANDEM WHEEL ASSEMBLY

2 PER OPERABLE DOOR PANEL
HARDWARE SUPPLIER: AMESBURY
PART #1966-7501-14
ADJUSTABLE 1 11/16" DIAMETER NYLON ROLLER
ASSEMBLY WITH ALUMINUM HOUSING ATTACHED TO
THE BOTTOM RAIL USING ONE 1/4"X1 SS ROD.



(H9) RECESSED PULL HANDLE ADAMS RITE 4431

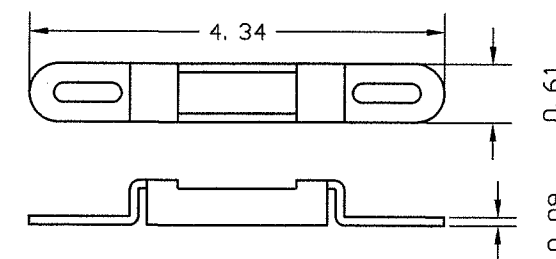


(H7) SINGLE DEAD LOCK

1 LOCK PER LOCK MEETING STILE
HARDWARE SUPPLIER: AMESBURY
PART #537-84
ATTACHED TO THE DOOR WITH
(2) #6X 1/4" SS FLAT HEAD SCREWS.

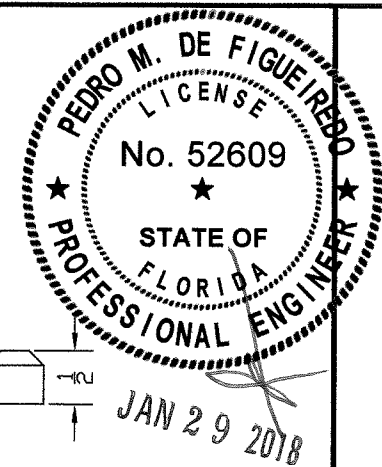
(1) #8X1/2 SMS SECURING
CLIP TO HEADER

(H6) FIXED PANEL HOLD CLIP 6063-T6 1/8" THICK ALUMINUM ANGLE



(H8) SINGLE DEAD LOCK STRIKE PLATE

1 PLATE PER LOCK
HARDWARE SUPPLIER: AMESBURY
PART #537-84
ATTACHED TO THE DOOR WITH (2) #10-16" SS FH SMS



ENGINEERING SERVICES - CA 32459
9715 W. BROWARD BLVD.
PLANTATION, FL 33324
PPMF@AOL.COM
ENGINEER SEAL
PEDRO DE FIGUEIREDO
PE 52609



PRODUCT: SLIDING GLASS DOOR

SMALL MISSILE IMPACT RATED

MANUFACTURER: SOUTHEASTERN
Manufacturers of Impact Resistant Sliding Glass Doors

1505 COMMERCE LANE, JUPITER, FL. 33458
PHONE: (561) 746-5493 - FAX: (561) 575-1826

SCALE:
NA

DATE:
01/28/18

DRAWING #
18-052 SM

SHEET
10 OF 11

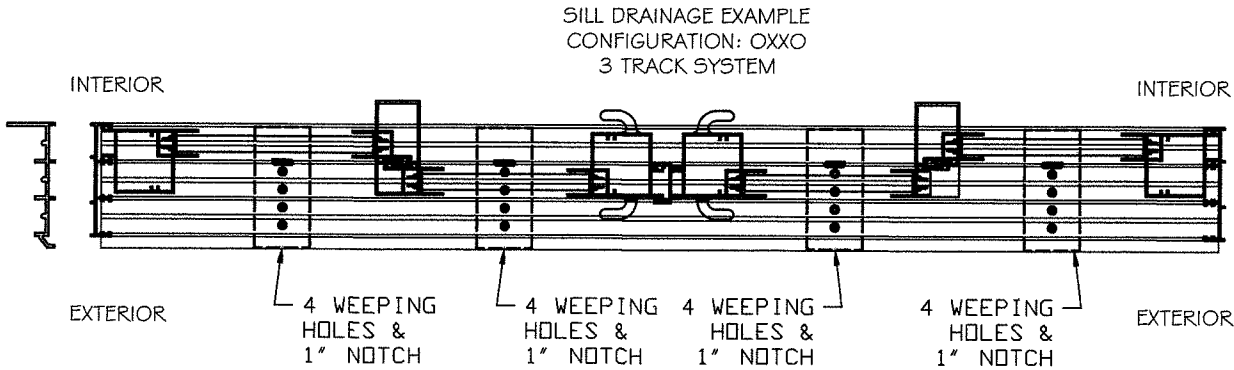
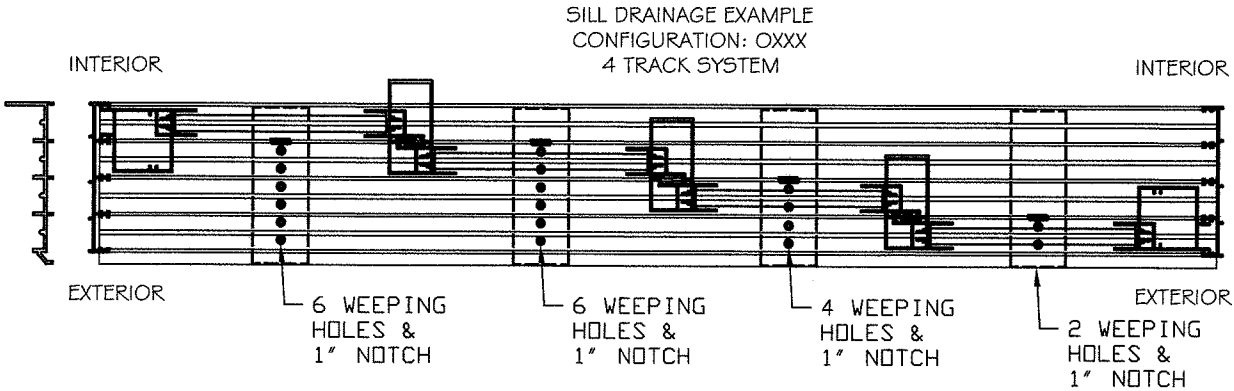
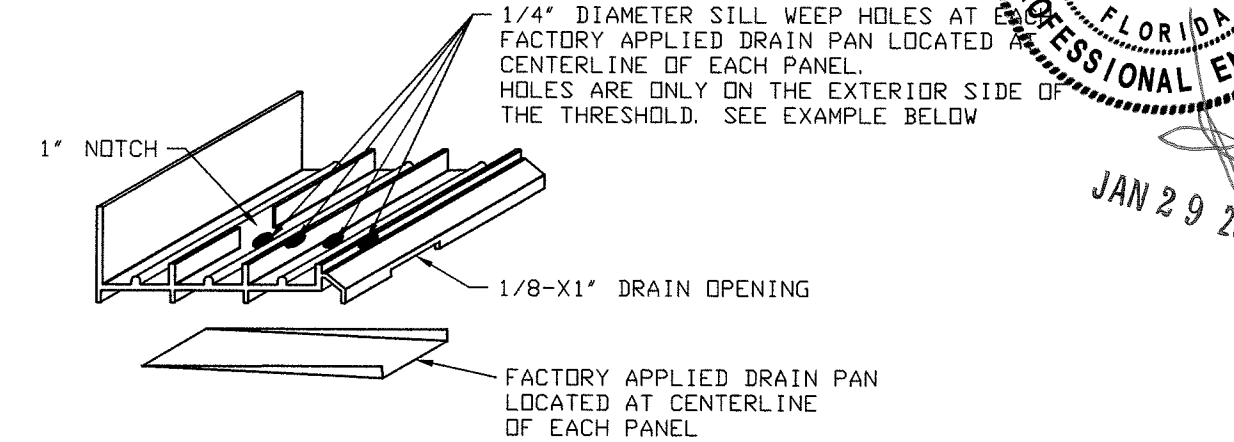
LIST OF COMPONENTS

ITEM	DESCRIPTION	MATERIAL	SUPPLIER
1	JAMB FRAMING & ACCESSORIES		
1.1	OPTIONAL JAMB SNAP COVER	6063-T5 ALUMINUM	SOUTHEASTERN DOOR COMPANY
1.2	2 TRACK - JAMB FRAME	6063-T6 ALUMINUM	SOUTHEASTERN DOOR COMPANY
1.3	3 TRACK - JAMB FRAME	6063-T6 ALUMINUM	SOUTHEASTERN DOOR COMPANY
1.4	4 TRACK - JAMB FRAME	6063-T6 ALUMINUM	SOUTHEASTERN DOOR COMPANY
1.5	5 TRACK - JAMB FRAME	6063-T6 ALUMINUM	SOUTHEASTERN DOOR COMPANY
1P	POCKET JAMB	6063-T6 ALUMINUM	SOUTHEASTERN DOOR COMPANY
1P.1	POCKET JAMB SNAP COVER	6063-T5 ALUMINUM	SOUTHEASTERN DOOR COMPANY
2	HEADER FRAMING		
2.2	2 TRACK - HEADER FRAME	6063-T6 ALUMINUM	SOUTHEASTERN DOOR COMPANY
2.3	3 TRACK - HEADER FRAME	6063-T6 ALUMINUM	SOUTHEASTERN DOOR COMPANY
2.4	4 TRACK - HEADER FRAME	6063-T6 ALUMINUM	SOUTHEASTERN DOOR COMPANY
2.5	5 TRACK - HEADER FRAME	6063-T6 ALUMINUM	SOUTHEASTERN DOOR COMPANY
3	SILL FRAMING		
3.2	2 TRACK - 13/16" SILL FRAME	6063-T6 ALUMINUM	SOUTHEASTERN DOOR COMPANY
3.22	2 TRACK - 2" SILL FRAME	6063-T6 ALUMINUM	SOUTHEASTERN DOOR COMPANY
3.23	2 TRACK - 3 1/4" SILL FRAME	6063-T6 ALUMINUM	SOUTHEASTERN DOOR COMPANY
3.3	3 TRACK - 13/16" SILL FRAME	6063-T6 ALUMINUM	SOUTHEASTERN DOOR COMPANY
3.32	3 TRACK - 2" SILL FRAME	6063-T6 ALUMINUM	SOUTHEASTERN DOOR COMPANY
3.33	3 TRACK - 3 1/4" SILL FRAME	6063-T6 ALUMINUM	SOUTHEASTERN DOOR COMPANY
3.4	4 TRACK - 13/16" SILL FRAME	6063-T6 ALUMINUM	SOUTHEASTERN DOOR COMPANY
3.42	4 TRACK - 2" SILL FRAME	6063-T6 ALUMINUM	SOUTHEASTERN DOOR COMPANY
3.43	4 TRACK - 3 1/4" SILL FRAME	6063-T6 ALUMINUM	SOUTHEASTERN DOOR COMPANY
3.5	5 TRACK - 13/16" SILL FRAME	6063-T6 ALUMINUM	SOUTHEASTERN DOOR COMPANY
3.52	5 TRACK - 2" SILL FRAME	6063-T6 ALUMINUM	SOUTHEASTERN DOOR COMPANY
3.53	5 TRACK - 3 1/4" SILL FRAME	6063-T6 ALUMINUM	SOUTHEASTERN DOOR COMPANY
3.A2	2" SILL ADAPTOR	6063-T6 ALUMINUM	SOUTHEASTERN DOOR COMPANY
3.A3	3 1/4" SILL ADAPTOR	6063-T6 ALUMINUM	SOUTHEASTERN DOOR COMPANY
4	ATLAS INTERLOCK STILE	6063-T6 ALUMINUM	SOUTHEASTERN DOOR COMPANY
5	ATLAS NARROW INTERLOCK STILE	6063-T6 ALUMINUM	SOUTHEASTERN DOOR COMPANY
6	ATLAS DOOR END RAIL	6063-T6 ALUMINUM	SOUTHEASTERN DOOR COMPANY
7	ATLAS DOOR ASTRAGAL	6063-T6 ALUMINUM	SOUTHEASTERN DOOR COMPANY
8	GLAZING ADAPTOR	6063-T6 ALUMINUM	SOUTHEASTERN DOOR COMPANY
9	ATLAS DOOR TOP / BOTTOM RAIL	6063-T6 ALUMINUM	SOUTHEASTERN DOOR COMPANY
10	END RAIL REINFORCEMENT	6063-T6 ALUMINUM	SOUTHEASTERN DOOR COMPANY
11	INTERLOCK REINFORCEMENT	6063-T6 ALUMINUM	SOUTHEASTERN DOOR COMPANY
12	SILL SHEAR CLIP	6063-T6 ALUMINUM	SOUTHEASTERN DOOR COMPANY

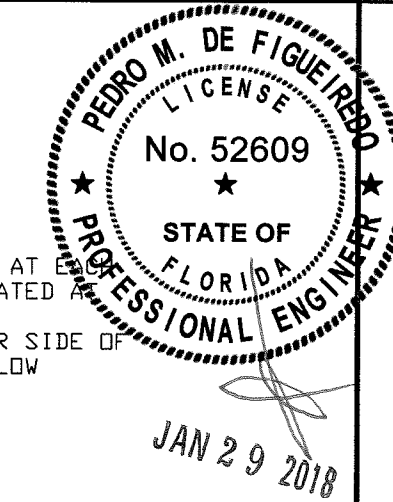
ITEM	DESCRIPTION	MATERIAL	SUPPLIER
M1	1/2" GLAZING GASKET	PVC	TEAM PLASTICS INC
M2	-----	---	-----
M3	W11175 PILE WEATHER STRIPPING		ULTRAFAB
M4	W11205 PILE WEATHER STRIPPING		ULTRAFAB
M5	W11255 PILE WEATHER STRIPPING		ULTRAFAB
M6	BULB VINYL	NEOPRENE	ULTRAFAB
M7	DUST PLUG		ULTRAFAB

ITEM	DESCRIPTION	MATERIAL	SUPPLIER
H1	2 POINT DEAD LOCK	STAINLESS STEEL	AMESBURY
H2	2 POINT LOCK STRIKE PLATE	STAINLESS STEEL	AMESBURY
H3	SINGLE WHEEL ASSEMBLY	ALUM. / NYLON	AMESBURY
H4	TANDEM WHEEL ASSEMBLY	ALUM. / NYLON	AMESBURY
H5	DOOR BUMPER	80 SHORE A NBR.	FRANK LOWE RUBBER & GASKER CO.
H6	FIXED PANEL HOLD CLIP W/ #8 SCREW	6063-T5 ALUMINUM	SOUTHEASTERN DOOR COMPANY
H7	SINGLE DEAD LOCK	STAINLESS STEEL	AMESBURY
H8	SINGLE STRIKE PLATE	STAINLESS STEEL	AMESBURY
H9	RECESSED PULL HANDLE	CAST ALUMINUM	ADAMS RITE

SILL DRAINAGE



DRAINAGE NOTE:
WEEP HOLES ARE INSTALLED UNDER ALL PANELS EXCEPT IN THE INNER TRACK



ENGINEERING SERVICES - CA 32459
9715 W. BROWARD BLVD.
PLANTATION, FL 33324
PPMF@AOL.COM
ENGINEER SEAL
PEDRO DE FIGUEIREDO
PE 52609



PRODUCT:
SLIDING GLASS DOOR
SMALL MISSILE IMPACT RATED

MANUFACTURER:
SOUTHEASTERN
Manufacturers of Impact Resistant Sliding Glass Doors
1505 COMMERCE LANE, JUPITER, FL. 33458
PHONE: (561) 746-5493 - FAX: (561) 575-1826

SCALE:
NA
DATE:
01/28/18
DRAWING #
18-052 SM
SHEET
11 OF 11

PRODUCT REVISED
as complying with the Florida
Building Code
Acceptance No. 18-0201-13
Expiration Date AUG 17, 2022
Ismael L. Llanos
Senior Project Engineer