



DEPARTMENT OF REGULATORY AND ECONOMIC RESOURCES (RER)  
BOARD AND CODE ADMINISTRATION DIVISION

## NOTICE OF ACCEPTANCE (NOA)

MIAMI-DADE COUNTY  
PRODUCT CONTROL SECTION  
11805 SW 26 Street, Room 208  
Miami, Florida 33175-2474  
T (786) 315-2590 F (786) 315-2599  
[www.miamidade.gov/economy](http://www.miamidade.gov/economy)

Jupiter Glass specialties Inc., dba  
South Eastern Door Company  
1505 Commerce Lane P.O. Box 794  
Jupiter, FL 33458

### SCOPE:

This NOA is being issued under the applicable rules and regulations governing the use of construction materials. The documentation submitted has been reviewed and accepted by Miami-Dade County RER -Product Control Section to be used in Miami Dade County and other areas where allowed by the Authority Having Jurisdiction (AHJ).

This NOA shall not be valid after the expiration date stated below. The Miami-Dade County Product Control Section (In Miami Dade County) and/or the AHJ (in areas other than Miami Dade County) reserve the right to have this product or material tested for quality assurance purposes. If this product or material fails to perform in the accepted manner, the manufacturer will incur the expense of such testing and the AHJ may immediately revoke, modify, or suspend the use of such product or material within their jurisdiction. RER reserves the right to revoke this acceptance, if it is determined by Miami-Dade County Product Control Section that this product or material fails to meet the requirements of the applicable building code.

This product is approved as described herein, and has been designed to comply with the Florida Building Code, including the High Velocity Hurricane Zone.

**DESCRIPTION: Series Atlas HP Aluminum Sliding Glass Door w/wo reinforcements -LMI**

**APPROVAL DOCUMENT:** Drawing No. **18-052** (former **16-093**), titled "Sliding Glass Door", sheets 1 through 11 of 11, prepared by PPMF Inc., dated JAN 29, 2018, signed and sealed by Pedro De Figueiredo, P.E., bearing the Miami-Dade County Product Control Revision stamp with the Notice of Acceptance number and expiration date by the Miami-Dade County Product Control Section.

**MISSILE IMPACT RATING: Large and Small Missile Impact Resistant**

### Limitations:

1. See Design Pressure (DP) Rating, +ve DP and max frame size limitation in sheet **1** and in note 2 in sheet **2**. See glass capacity DP and DLO limitation in sheet **2**. Lower design pressure shall control.
2. See reinforcement requirements in sheet **4**.
3. Pocket structure, under separate approval to be reviewed by Building officials.

**LABELING:** Each unit shall bear a permanent label with the manufacturer's name or logo, city, state and series and following statement: "Miami-Dade County Product Control Approved", noted herein.

**RENEWAL** of this NOA shall be considered after a renewal application has been filed and there has been no change in the applicable building code negatively affecting the performance of this product.

**TERMINATION** of this NOA will occur after the expiration date or if there has been a revision or change in the materials, use, and/or manufacture of the product or process. Misuse of this NOA as an endorsement of any product, for sales, advertising or any other purposes shall automatically terminate this NOA. Failure to comply with any section of this NOA shall be cause for termination and removal of NOA.

**ADVERTISEMENT:** The NOA number preceded by the words Miami-Dade County, Florida, and followed by the expiration date may be displayed in advertising literature. If any portion of the NOA is displayed, then it shall be done in its entirety.

**INSPECTION:** A copy of this entire NOA shall be provided to the user by the manufacturer or its distributors and shall be available for inspection at the job site at the request of the Building Official.

This NOA **revises # 17-0214.03** consists of this page 1 and evidence pages E-1 & E-2, as well as approval document mentioned above.

The submitted documentation was reviewed by **Ishaq I. Chanda, P.E.**



NOA No. 18-0201.12  
Expiration Date: June 08, 2022  
Approval Date: March 22, 2018  
Page 1

3/13/18

**Jupiter Glass specialties Inc., dba**  
**South Eastern Door Company**

**NOTICE OF ACCEPTANCE: EVIDENCE SUBMITTED**

**1. Evidence submitted under previous approvals**

**A. DRAWINGS**

1. Manufacturer's die drawings and sections.
2. Drawing No. **16-093**, titled "Sliding Glass Door", sheets 1 through 11 of 11, prepared by EngCo. Inc., dated 11/23/16 and last revised on MAY 16, 2017, signed and sealed by Pedro De Figueiredo, P.E.

**B. TESTS (submitted under file #17-0214.03 )**

1. Test reports on: 1) Air Infiltration Test, per FBC, TAS 202-94  
2) Uniform Static Air Pressure Test, Loading per FBC, TAS 202-94  
3) Water Resistance Test, per FBC, TAS 202-94  
4) Small Missile Impact Test per FBC, TAS 201-94  
5) Large Missile Impact Test per FBC, TAS 201-94  
6) Cyclic Wind Pressure Loading per FBC, TAS 203-94  
7) Forced Entry Test, per FBC 2411 3.2.1 and TAS 202-94

along with marked-up drawings and installation diagram of Aluminum Sliding Glass Doors, prepared by Black Water Testing, Inc., Test Report No. **BT-SED-16-001**, dated DEC 23, 2016, signed & sealed by Constantin Bortes , P. E.

Note: This test report is revised by ad addendum letter, issued by Black Water Testing Inc., dated 03/27/17, signed & sealed by Constantin Bortes, P. E.

**C. CALCULATIONS**

1. Anchor verification calculation, complying w/ FBC 2014, prepared by EngCo. Inc., dated FEB 02, 2017, signed and sealed by Pedro De Figueiredo, P.E.
2. Glazing complies with ASTM E-1300-02, -04 & -09.

**D. QUALITY ASSURANCE**

1. Miami Dade Department of Regulatory and Economic Resources (RER).

**E. MATERIAL CERTIFICATIONS**


1. Notice of Acceptance No. **14-0916.11** issued to **Kuraray America, Inc.** (Former E.I. DuPont DeNemours & Co., Inc. for the "**Sentry Glass ® (Clear and White) Glass Interlayers**", expiring on 07/04/18.

**F. STATEMENTS**

1. Statement letter of compliance w/ FBC-2014 and "No financial interest" dated 02/02/17, prepared by EngCo, Inc., signed and sealed by Pedro De Figueiredo, P.E.
2. Active status listing of incorporation with Florida Department of State of Jupiter Glass Specialties, Inc., since 03/17/1980.
3. Active status listing of fictitious name with Florida Department of State of the Southeastern door Company, since 01/01/1991.

**G. OTHER**

1. Test proposal **#16-072**, dated June 22, 2016 approved by RER.

  
\_\_\_\_\_  
**Ishaq I. Chanda, P.E.**  
**Product Control Examiner**  
**NOA No. 18-0201.12**  
**Expiration Date: June 08, 2022**  
**Approval Date: March 22, 2018**

**Jupiter Glass specialties Inc., dba**  
**South Eastern Door Company**

**NOTICE OF ACCEPTANCE: EVIDENCE SUBMITTED**

2. **New Evidence submitted.**

**A. DRAWINGS**

1. Drawing No. **18-052** (former **16-093**), titled "Sliding Glass Door", sheets 1 through 11 of 11, prepared by PPMF Inc., dated JAN 29, 2018, signed and sealed by Pedro De Figueiredo, P.E.

**B. TESTS**

1. None.

**C. CALCULATIONS**

1. None.

**D. QUALITY ASSURANCE**

1. Miami Dade Department of Regulatory and Economic Resources (RER).

**E. MATERIAL CERTIFICATIONS**

1. Notice of Acceptance No. **17-0808.02** issued to Kuraray America, Inc. (former E.I. DuPont DeNemours & Co., Inc.) for the "Kuraray **Sentry Glass ® Interlayer**", expiring on 07/4/23.

**F. STATEMENTS**

1. Statement letter of conformance to FBC 2017(6<sup>th</sup> edition), prepared by PPMF Inc., dated JAN 29, 2018, signed and sealed by Pedro De Figueiredo, P.E.

**G. OTHER**

1. This NOA revises NOA # **17-0214.03**, expiring 06/08/2022.



Ishaq I. Chanda, P.E.  
Product Control Examiner  
NOA No. 18-0201.12  
Expiration Date: June 08, 2022  
Approval Date: March 22, 2018

GENERAL NOTES:

FLORIDA BUILDING CODE 2017 (6th ed) HVHZ  
LARGE & SMALL MISSILE IMPACT RATED

- 1- CODE: THIS PRODUCT HAS BEEN TESTED AND DESIGNED IN ACCORDANCE WITH THE FBC 2017 6TH EDITION INCLUDING THE HIGH VELOCITY HURRICANE ZONE (HVHZ).
- 2- DEFINITION: THIS PRODUCT IS AN ALUMINUM SLIDING GLASS DOOR DESIGNED, CONSTRUCTED AND TESTED PROVIDING PROTECTION FROM HURRICANE FORCE WINDS AND WIND BORNE DEBRIS (LARGE AND SMALL MISSILE) WITHIN THE ALLOWABLE DESIGNED PRESSURES AND LIMITATIONS STATED IN THIS APPROVAL. INSTALLATION OF HURRICANE PROTECTION DEVICES IS NOT REQUIRED.
- 3- POSTING: PRODUCT SHALL BE LABELED AS FOLLOW:

"JUPITER GLASS SPECIALTIES, INC DBA  
SOUTHEASTERN DOOR COMPANY - JUPITER - FLORIDA  
SERIES ATLAS HP SLIDING GLASS DOOR  
LARGE & SMALL MISSILE IMPACT RATED  
MIAMI-DADE PRODUCT CONTROL APPROVED

- 4- LOADS: DESIGNED LOAD CALCULATED BASED ON THE ASCE 7-10 AND PROVIDED BY A PROFESSIONAL ARCHITECT OR ENGINEER FOR EACH SPECIFIC PROJECT. THE CALCULATED DESIGNED PRESSURE MUST NOT EXCEED THE ALLOWABLE PRESSURES HERE IN SPECIFIED. THE DESIGN PRESSURES, AS DETERMINED FROM ASCE 7-10, ARE PERMITTED TO BE MULTIPLE BY 0.6
- 5- MATERIAL: ALL ALUMINUM PARTS TO BE 6063-T6 ALLOY OR AS NOTED AND GLAZING TO BE LAMINATED IMPACT GLASS AS SPECIFIED ON THIS APPROVAL.
- 6- FASTENERS: ASSEMBLY SCREWS AND ANCHORS SHALL BE AS SPECIFIED IN THE CURRENT SET OF DRAWINGS. INSTALLATION AND LOADS AS PER THIS APPROVAL. ANCHOR SPACING AND LOADS MUST NOT EXCEED THE MAXIMUM LIMITS SPECIFIED BY THIS APPROVAL.
- 7- USE: IT SHALL BE THE RESPONSIBILITY OF THE CONTRACTOR, ARCHITECT OR ENGINEER OF RECORD TO VERIFY THE FOLLOWING:
- 7.1- THE STABILITY OF THE STRUCTURE WHERE THE PRODUCT IS TO BE ATTACHED INSURING PROPER ANCHORAGE.
- 7.2- THE SITE SPECIFIC PROJECT CRITERIA, SUCH AS BUT NOT LIMITED TO, LOCAL CODE REQUIREMENTS, DESIGNED PRESSURES ETC.
- 7.3- THAT THIS APPROVAL IS ADEQUATE TO THE SPECIFIC PROJECT.
- 8- DISSIMILAR MATERIALS: WHERE ALUMINUM IS IN CONTACT OR FASTENED TO DISSIMILAR MATERIALS, INCLUDING BUT NOT LIMITED TO STEEL, INSTALLATION SHALL MEET THE REQUIREMENTS OF CHAPTER M.7 OF THE ALUMINUM DESIGN MANUAL 2015.

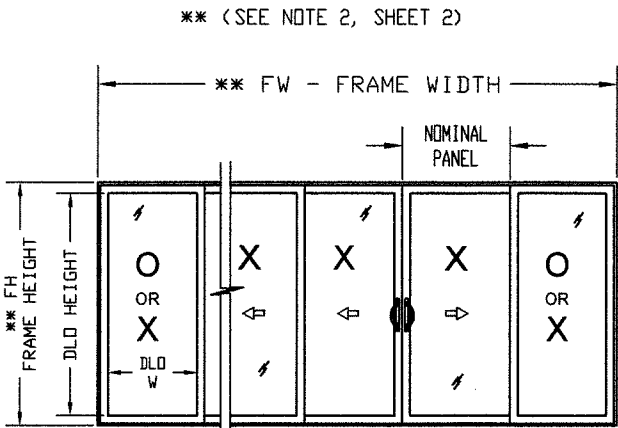
DOOR UNIT SELECTION PROCEDURE AND INSTRUCTIONS TO USE  
THIS DRAWING TO VERIFY DOOR ADEQUACY PRESSURE

- STEP 1 - SHEET 1 GENERAL NOTE 4: DETERMINE PROJECT DESIGNED PRESSURE (DP) AS INDICATED.
- STEP 2 - SHEET 1: COMPARE (DP) WITH PRODUCT DESIGN RATING, FUNCTION OF DOOR SIZES FW x FH AND POSITIVE PRESSURE OF THRESHOLD RISER
- STEP 3 - SHEET 5, 6 & 7: SELECT FRAME ANCHORING IN ACCORDANCE WITH 2, 3, 4 OR 5 TRACK SELECTION.
- STEP 4 - THE PRODUCT DESIGNED RATING MUST BE EQUAL OR GREATER THAN THE CALCULATED PROJECT WIND PRESSURE (PD)

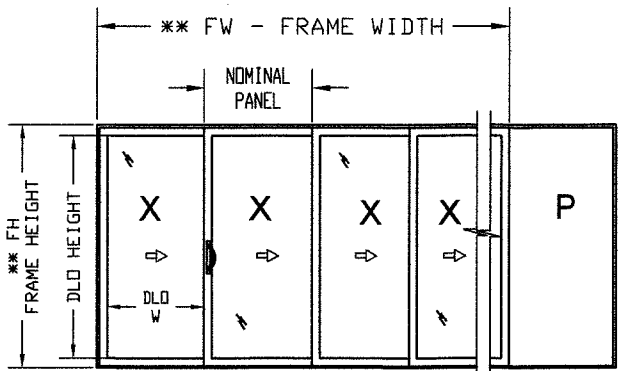
TABLE OF CONTENTS:

SHEET	DESCRIPTION
1	GENERAL NOTES, PRODUCT DESIGN RATING AND QUALIFICATIONS
2	DOOR SAMPLE ELEVATIONS WITH FIXED AND OPERABLE PANELS AND POCKET CONFIGURATION
3	TYPICAL ELEVATION WITH CROSS SECTIONS LOCATOR
4	DOOR SECTIONS DETAILS
5	JAMB FRAMING ANCHORAGE DETAILS
6	HEADER FRAMING ANCHORAGE DETAILS
7	SILL FRAMING ANCHORAGE DETAILS
8	FRAMING DIE COMPONENTS
9	PANEL DIE COMPONENTS, GLAZING CONFIGURATIONS
10	PANEL HARDWARE
11	LIST OF COMPONENTS

PRODUCT DESIGN RATING AND QUALIFICATIONS



NOMINAL PANEL = FW / # OF PANELS



NOMINAL PANEL = FW / # OF PANELS  
NOTE: POCKET IS NOT TO BE INCLUDED IN THE FW

DESIGN PRESSURE RATING	IMPACT RATING	PANEL SIZES	MAX. FW X FH
+65 PSF * -75 PSF	LARGE & SMALL MISSILE IMPACT	52" X 100 1/2" NOMINAL MODULE	468" X 102 1/2"
±50 PSF *	LARGE & SMALL MISSILE IMPACT	48" X 117" NOMINAL MODULE	432" X 120"

\* POSITIVE (EXTERIOR) DP SELECTION

THRESHOLD RISER TYPE	MAXIMUM PRESSURES (PSF)	
	CASE 1	CASE 2
3-1/4"	+65	+65
2"	+65	+50
13/16"	+65	--

NOTES:

- 1- CASE 1: MAXIMUM POSITIVE PRESSURES FOR 3-1/4", 2" OR 13/16" THRESHOLD WITH OVERHANG AS PER ILLUSTRATION "Z".
- 2- CASE 2: MAXIMUM POSITIVE PRESSURES FOR 3-1/4" AND 2" THRESHOLD RISER W/OUT THE OVERHANG.
- 3- THE POSITIVE PRESSURE SHALL BE THE LESSER VALUE FROM THE ABOVE TABLE

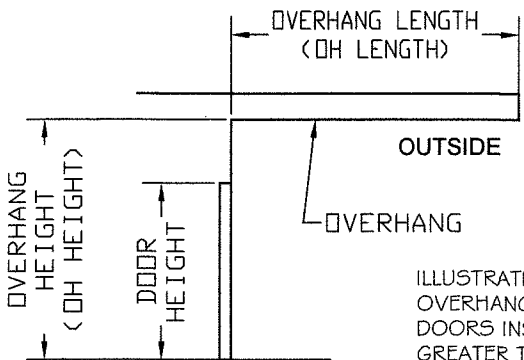
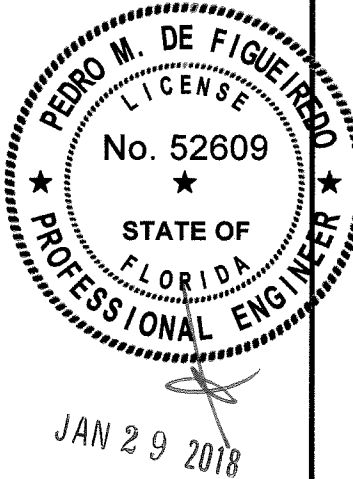


ILLUSTRATION "Z"  
OVERHANG IN COMPLIANCE WITH THE FBC REQUIREMENTS. DOORS INSTALLED WHERE THE OVERHANG (OH) RATIO IS GREATER TO OR MORE THAN 1 NEED NOT TO BE TESTED FOR WATER INFILTRATION. THE OH RATIO SHALL BE CALCULATED BY THE FOLLOWING EQUATION  
OH RATIO = OH LENGTH / OH HEIGHT >= 1.0

PRODUCT REVIEWED  
as complying with the Florida  
Building Code  
Acceptance No. 18-0201-12  
Expiration Date: JUNE 09, 2022  
By: [Signature]  
Miami: Back Product Control

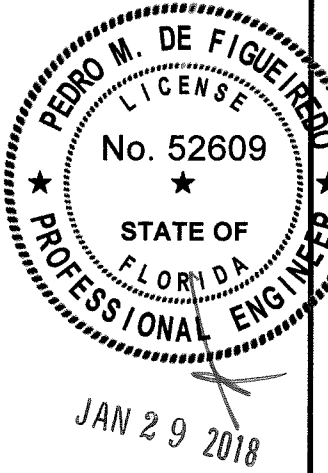


PRODUCT: SLIDING GLASS DOOR  
LARGE & SMALL MISSILE IMPACT RATED

MANUFACTURER: SOUTHEASTERN  
Manufacturers of Impact Resistant Sliding Glass Doors  
1505 COMMERCE LANE, JUPITER, FL 33458  
PHONE: (561) 746-5493 - FAX: (561) 575-1826

SCALE: NA  
DATE: 01/28/18  
DRAWING #: 18-052  
SHEET 1 OF 11

DOORS SAMPLE ELEVATIONS WITH OPERABLE AND FIXED PANELS AND POCKET CONFIGURATIONS



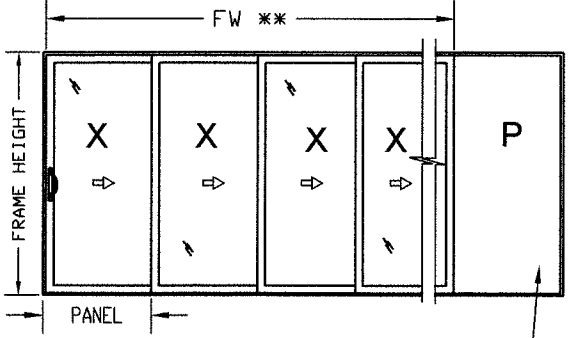
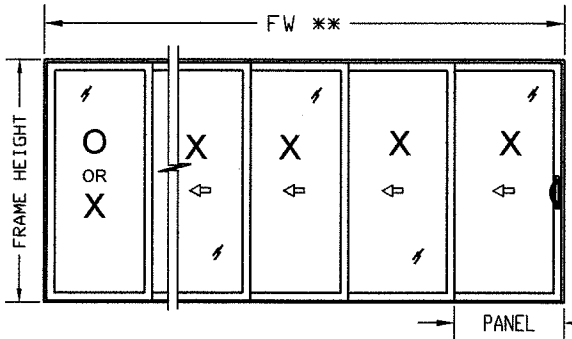
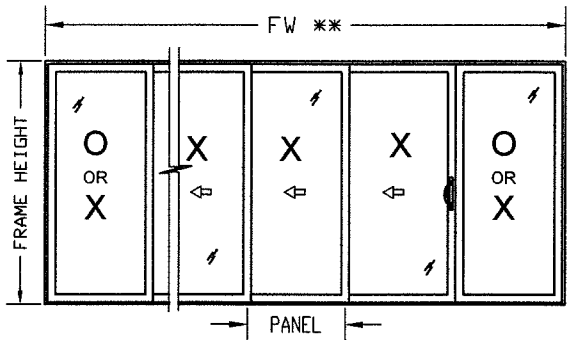
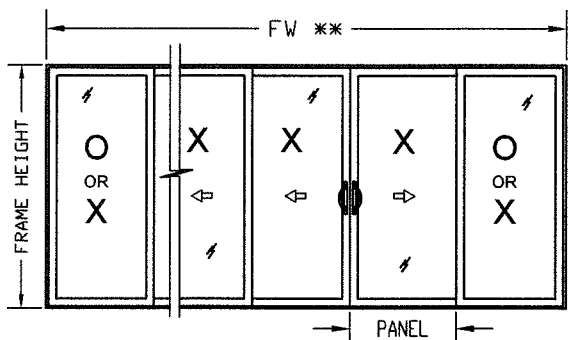
PRODUCT:  
**SLIDING GLASS DOOR**  
LARGE & SMALL MISSILE  
IMPACT RATED

MANUFACTURER:  
**SOUTHEASTERN**  
Manufacturers of Impact Resistant Sliding Glass Doors  
1505 COMMERCE LANE, JUPITER, FL. 33458  
PHONE: (561) 746-5493 - FAX: (561) 575-1826

SCALE:  
NA  
DATE:  
01/28/18  
DRAWING #  
18-052  
SHEET  
2 OF 11

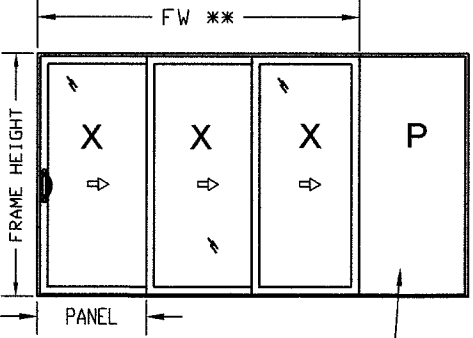
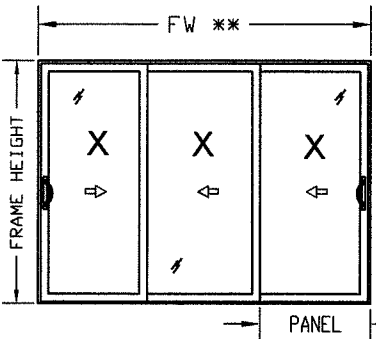
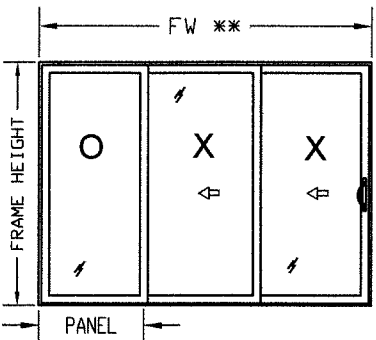
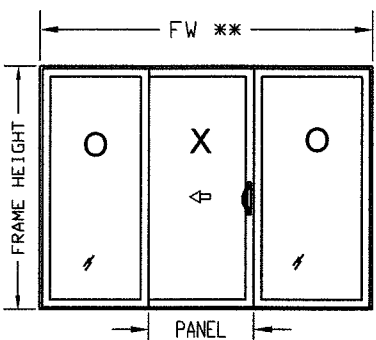
ENGINEERING SERVICES - CA 32459  
9715 W. BROWARD BLVD.  
PLANTATION, FL 33324  
PPMIF@AOL.COM  
ENGINEER SEAL  
PEDRO DE FIGUEIREDO  
PE 52609

4 OR MORE PANELS



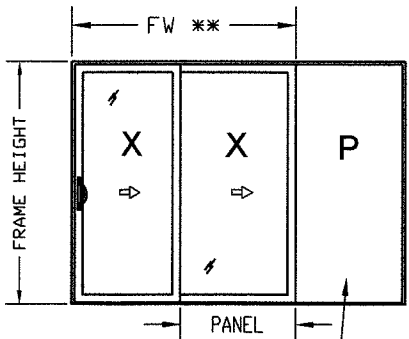
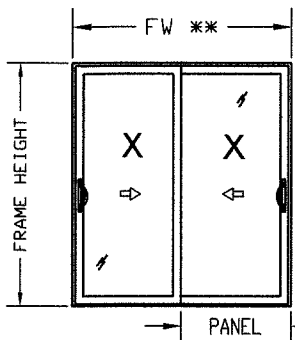
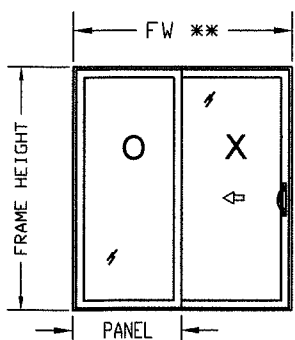
POCKET STRUCTURE  
DESIGN NOT PART  
OF THIS APPROVAL

3 PANELS



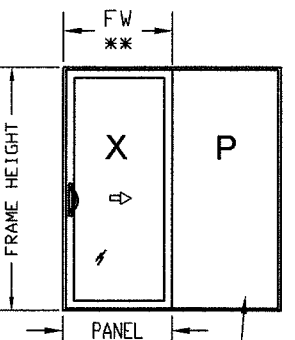
POCKET STRUCTURE  
DESIGN NOT PART  
OF THIS APPROVAL

2 PANELS



POCKET STRUCTURE  
DESIGN NOT PART  
OF THIS APPROVAL

1 PANEL



POCKET STRUCTURE  
DESIGN NOT PART  
OF THIS APPROVAL

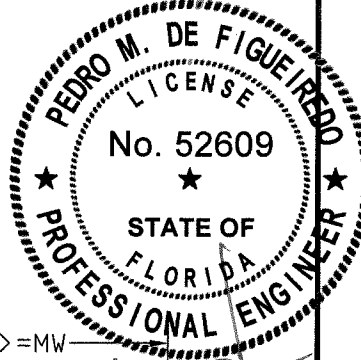
P- POCKET  
X- OPERABLE PANEL  
O- FIXED PANEL  
FW- FRAME WIDTH  
DLO- DAYLIGHT OPENING PANEL  
\*\* (SEE NOTE 2)

NOTES:

- 1- DOOR CAN BE CONFIGURED WITH AS MANY PANELS AS THE TWO, THREE, FOUR OR FIVE TRACK SYSTEM CAN FIT, LIMITED TO THE MAXIMUM TESTED FRAME WIDTH X 1.5 WITH LIMITATIONS AS BELOW:
- 2- MAXIMUM FW=  $312 \times 1.5 = 468"$  FOR  $FH \leq 102 \frac{1}{2}"$   
MAXIMUM FW=  $288 \times 1.5 = 432"$  FOR  $102 \frac{1}{2}" \leq FH \leq 120"$
- 3- MAXIMUM DLO=  $46 \frac{5}{8}" \times 94 \frac{1}{16}"$  FOR  $52" \times 100"$  NOMINAL PANELS  
MAXIMUM DLO=  $42 \frac{5}{8}" \times 111 \frac{9}{16}"$  FOR  $48" \times 117"$  NOMINAL PANELS

PRODUCT REVISED  
as complying with the Florida  
Building Code  
Acceptance No. 18-0201-12  
Expiration Date 6/18/22  
By: [Signature]  
Product Control

TYPICAL ELEVATION AND CROSS SECTION LOCATOR



ENGINEERING SERVICES - CA 32459  
9715 W. BROWARD BLVD.  
PLANTATION, FL 33324  
PPMF@AOL.COM  
ENGINEER SEAL  
PEDRO DE FIGUEIREDO  
PE 52609

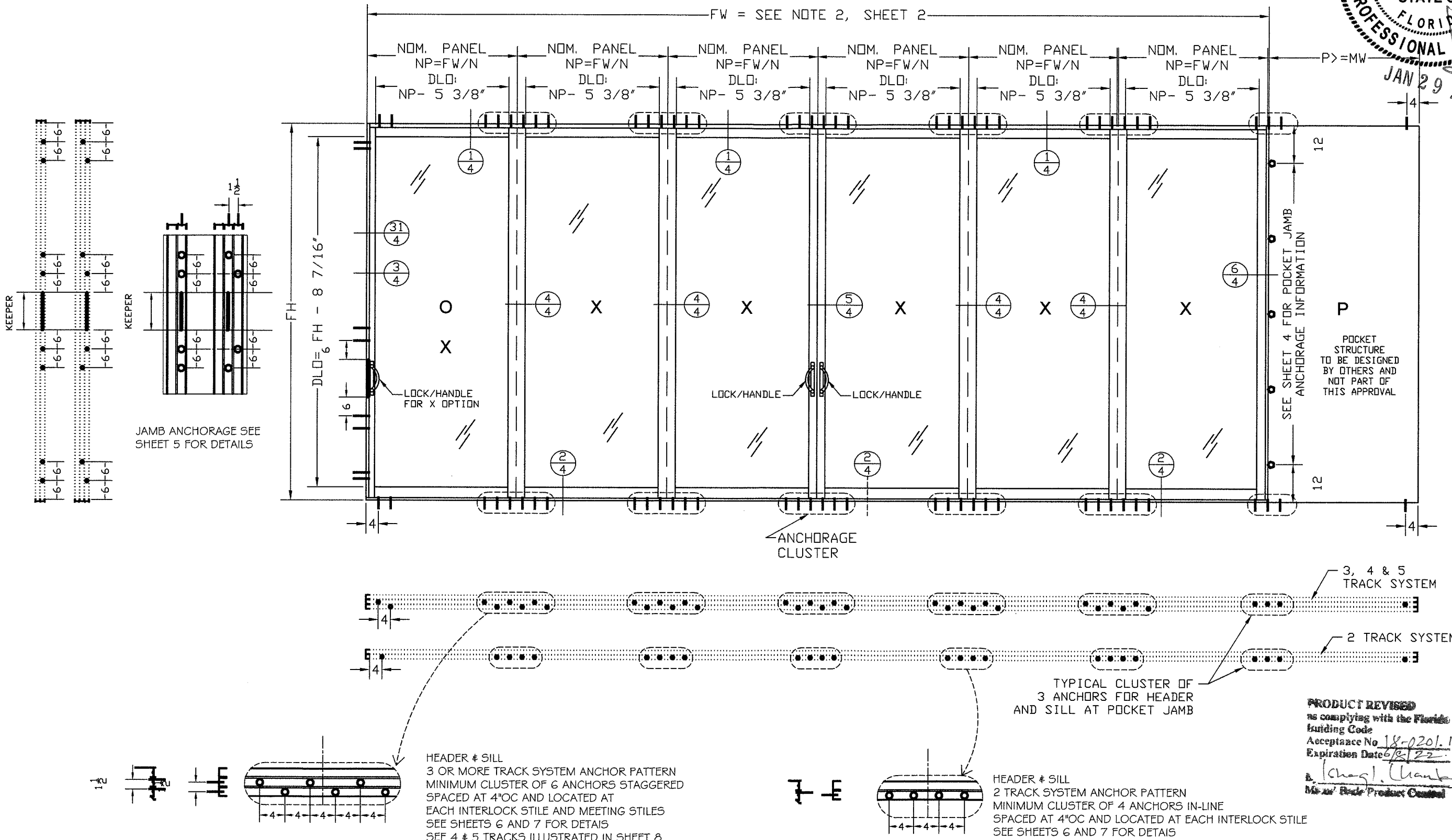


PRODUCT:  
SLIDING GLASS DOOR

LARGE & SMALL MISSILE  
IMPACT RATED

MANUFACTURER:  
**SOUTHEASTERN**  
Manufacturers of Impact Resistant Sliding Glass Doors  
1505 COMMERCE LANE, JUPITER, FL 33458  
PHONE: (561) 746-5493 - FAX: (561) 575-1826

SCALE:  
NA  
DATE:  
01/28/18  
DRAWING #  
18-052  
SHEET  
3 OF 11



# TYPICAL DOOR SECTIONS

## ANCHOR SCHEDULE

TYPE	DESCRIPTION	EMBEDMENT	SUBSTRATE	EDGE DISTANCE
A	1/4" TAPCON BY ITW	1 3/4" MIN.	3000 PSI CONCRETE	3"
B **	1/4" TAPCON BY ITW	1 1/4" MIN.	MASONRY BLOCK	3"
C	1/4" TAPCON BY ITW	1 1/2" MIN.	PT WOOD (SG=.55)	3/4"
D	1/4-14 GR 5 SMS	MIN. 3 THREADS	METAL STRUCTURES	3/4"

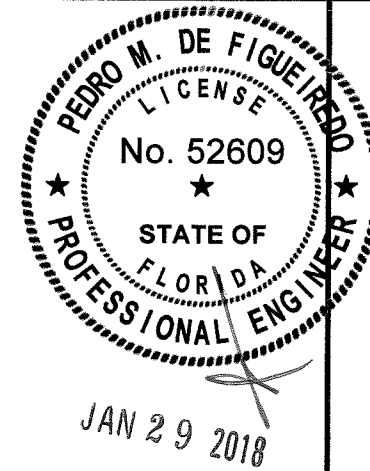
## NOTES:

- 1- MINIMUM EMBEDMENT ARE BEYOND WALL DRESSING.
- 2- METAL STRUCTURES ARE TO BE ASTM A36 STEEL OR 6063-T6 ALUMINUM (1/8" THICK MIN.)
- 3- ANCHOR TYPE D MUST HAVE A MINIMUM 3 THREADS EMBEDMENT PASS SUBSTRATE
- 4- CONCRETE MASONRY UNITS SHALL CONFORM TO ASTM C-90 WITH MINIMUM 2000 PSI
- 5- ANCHORS A, B AND C: YIELD STRENGTH  $F_y=100$  KSI, ULTIMATE STRENGTH  $F_u=125$  KSI
- 6- ANCHORS D: YIELD STRENGTH  $F_y=92$  KSI, ULTIMATE STRENGTH  $F_u=120$  KSI

## POCKET ANCHORS:

FOR LOADS EQUAL OR LESS THAN 50 PSF  
ANCHORS A, C AND D SPACED AT 16" OC  
ANCHORS B SPACED AT 4" OC

FOR LOADS GREATER THAN 50 PSF  
ANCHORS A, C AND D SPACED AT 10" OC  
\*\* ANCHORS B NOT APPLICABLE



ENGINEERING SERVICES - CA 32459  
9715 W. BROWARD BLVD.  
PLANTATION, FL 33324  
PPMF@AOL.COM  
ENGINEER SEAL  
PEDRO DE FIGUEIREDO  
PE 52609



PRODUCT:  
SLIDING GLASS DOOR

LARGE & SMALL MISSILE  
IMPACT RATED

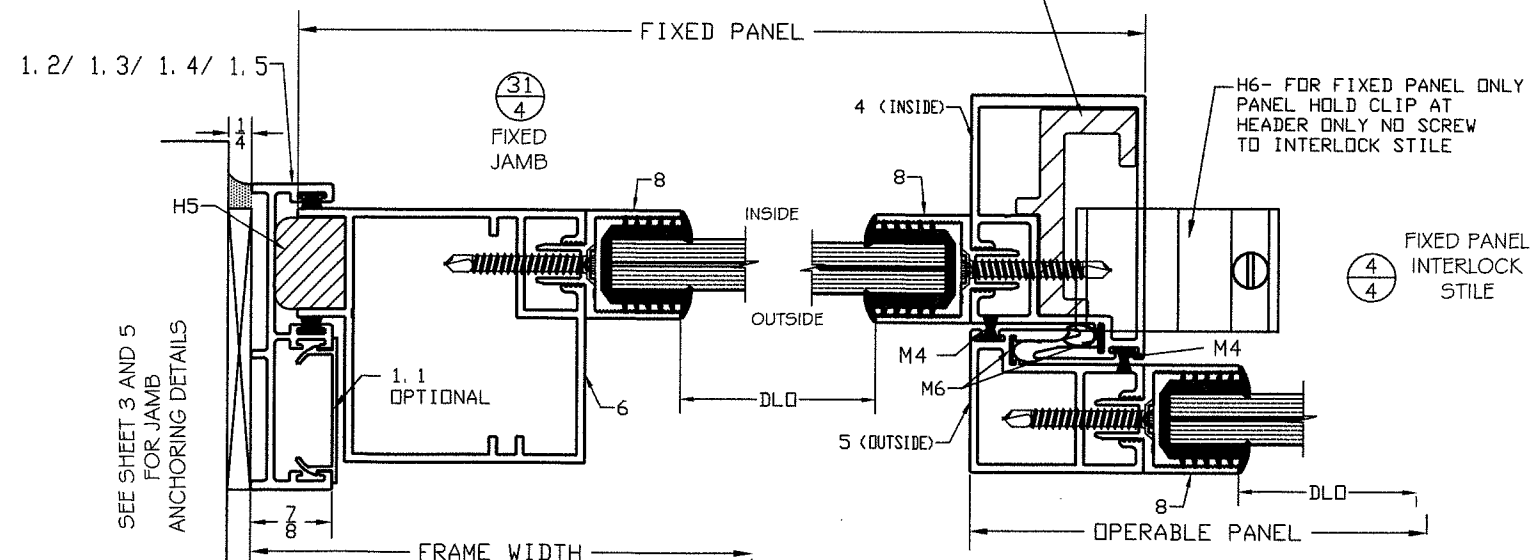
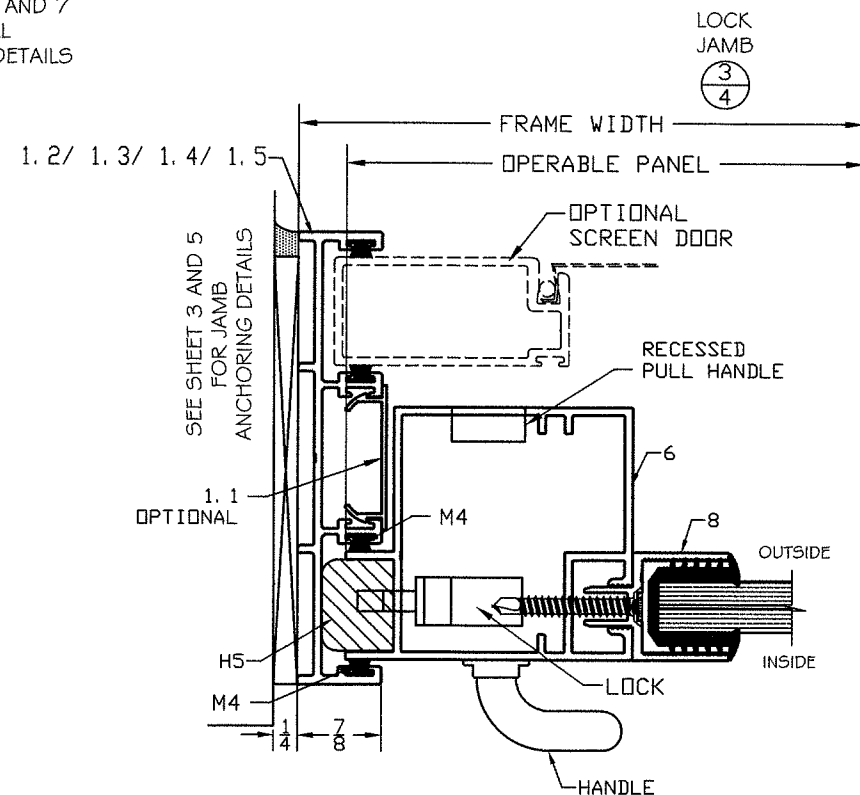
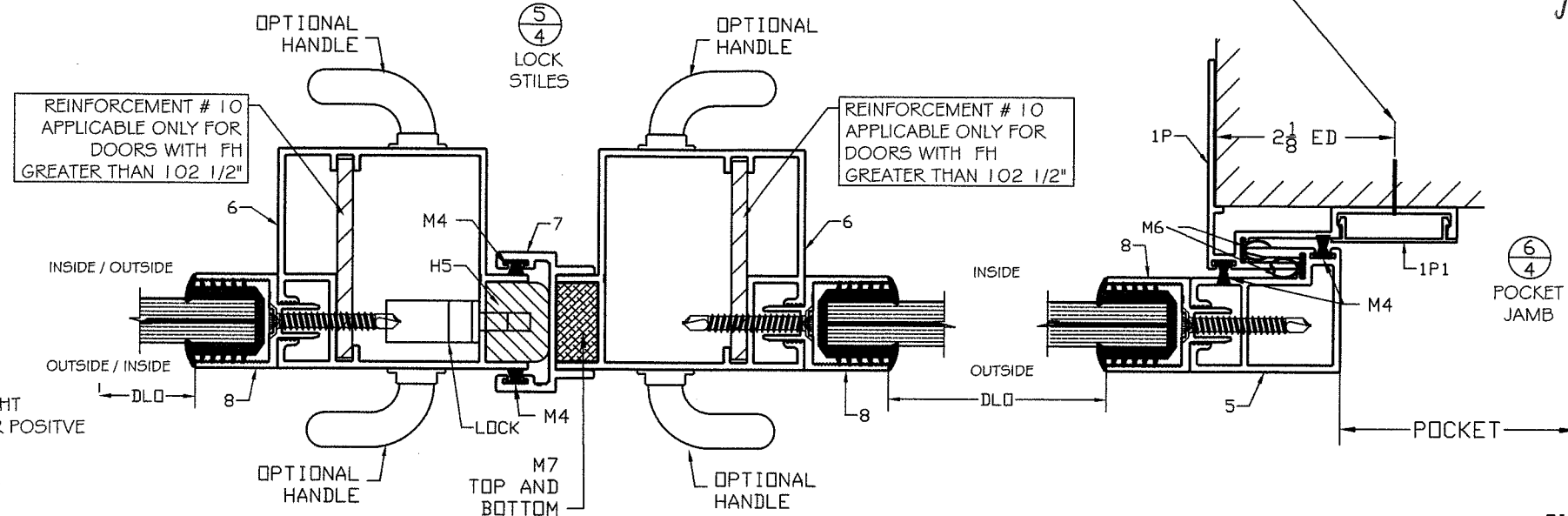
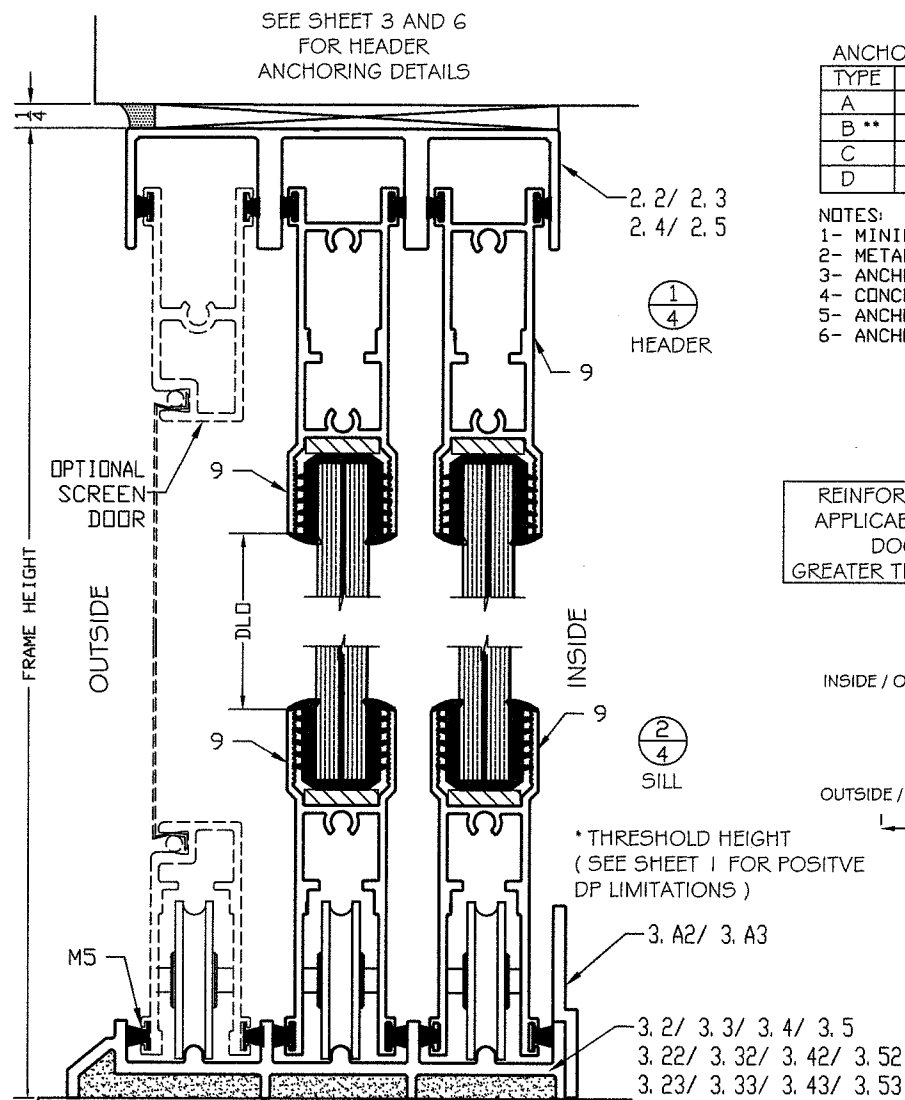
MANUFACTURER:  
**SOUTHEASTERN**  
Manufacturers of Impact Resistant Sliding Glass Doors  
1505 COMMERCE LANE, JUPITER, FL 33458  
PHONE: (561) 748-5493 - FAX: (561) 575-1826

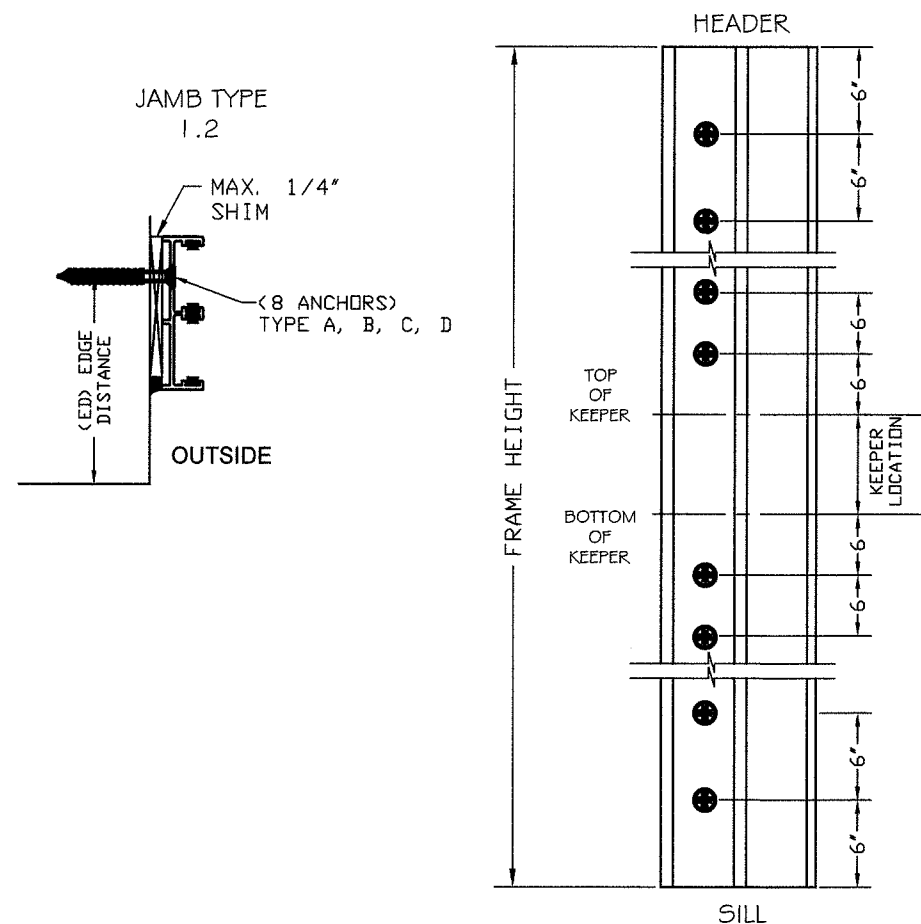
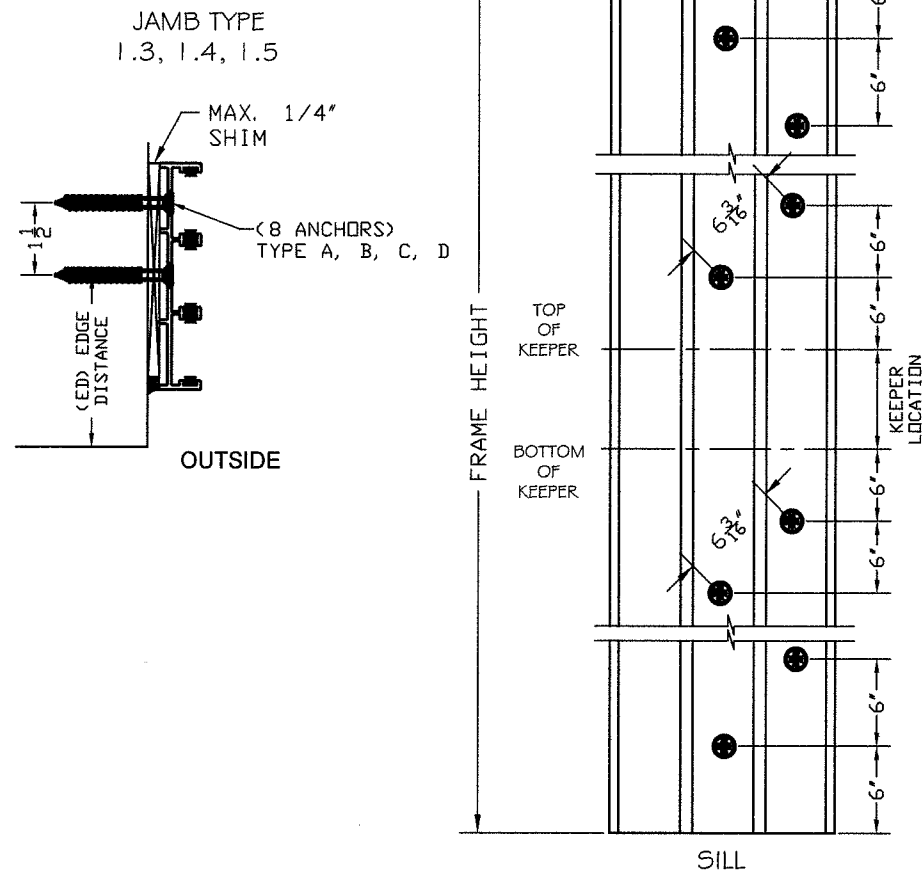
SCALE:  
NA

DATE:  
01/28/18

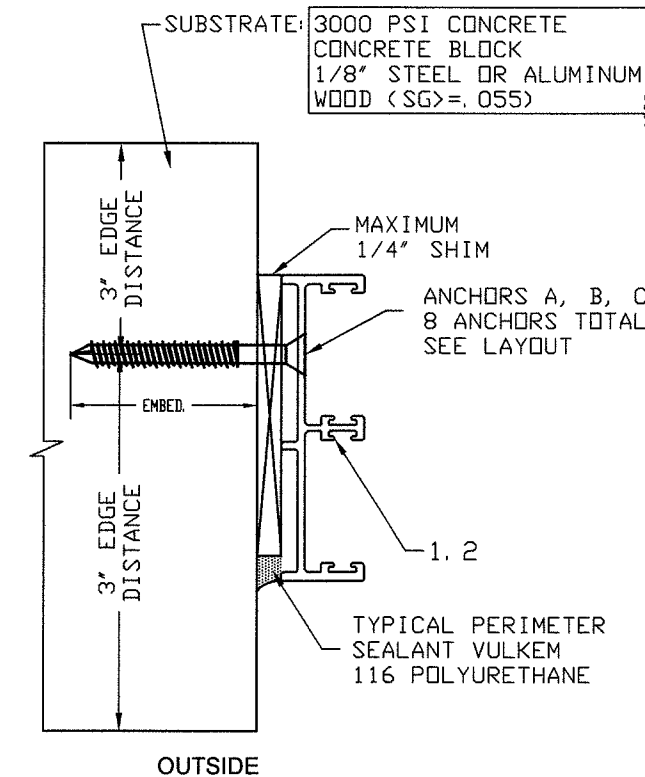
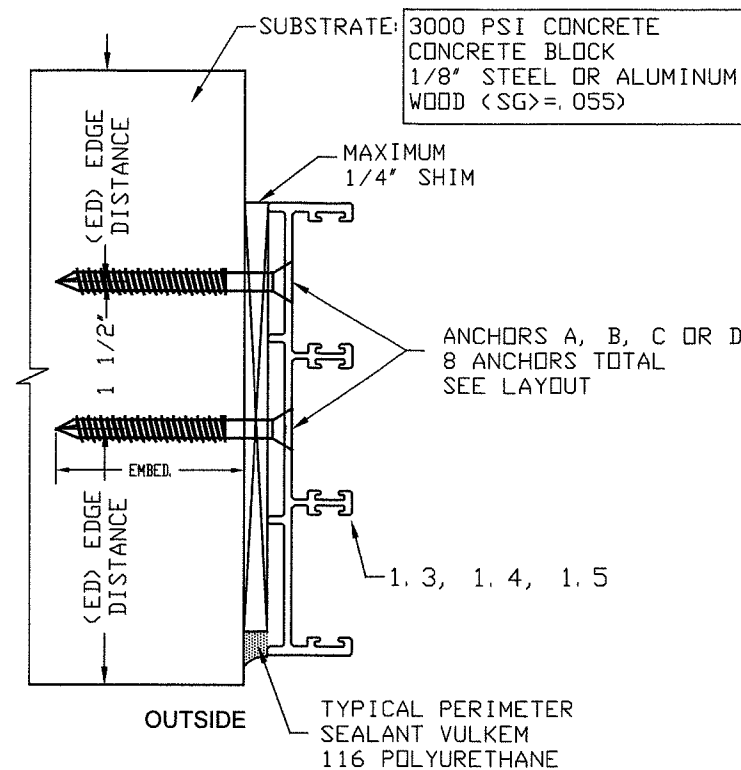
DRAWING #  
18-052

SHEET  
4 OF 11

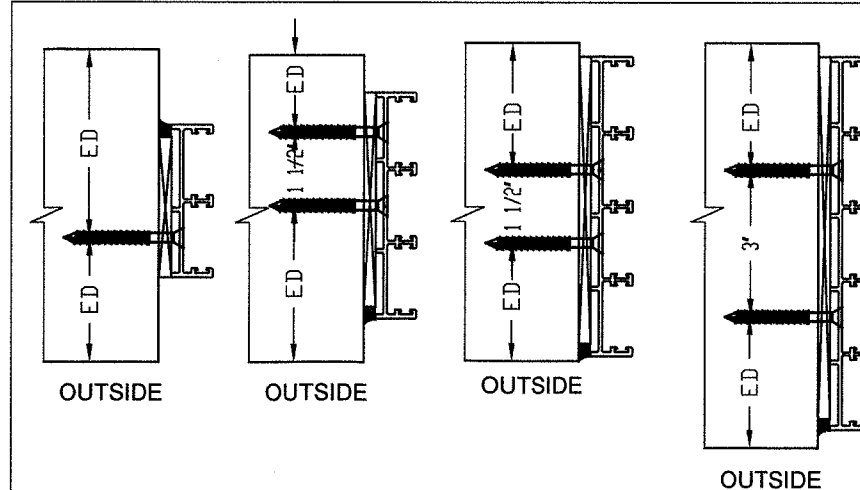




## JAMB FRAMING ANCHORAGE DETAILS



FOR INSTALLATION WITH 1X & 2X WOOD BUCK  
WOOD BUCKS TO BE PROVIDED BY OTHERS AND TO BE PROPERLY  
ENGINEERED AND SECURED TO TRANSFER IMPOSED LOADS.



NOTE:  
FOR 2 & 3 TRACKS, ANCHORS CAN BE PLACED  
IN ANY SECTION OF THE TRACK AS LONG AS  
THE EDGE DISTANCE IS MAINTAINED  
FOR 4 & 5 TRACKS, ANCHORS TO BE  
PLACED DISTRIBUTED AMONG INNER MOST AND  
MIDDLE TRACKS. IF EDGE DISTANCE IS BELOW  
THAN REQUIRED, AVOID ANCHORAGE AT THE  
OUTERMOST TRACK. (SEE ILLUSTRATION).

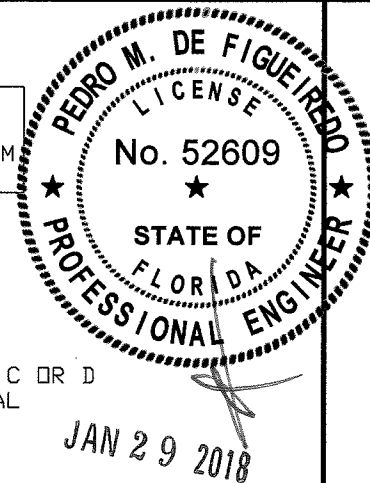
### ANCHOR SCHEDULE

TYPE	DESCRIPTION	EMBEDMENT	SUBSTRATE	EDGE DISTANCE
A	1/4" TAPCON BY ITW	1 3/4" MIN.	3000 PSI CONCRETE	3"
B	1/4" TAPCON BY ITW	1 1/4" MIN.	MASONRY BLOCK	3"
C	1/4" TAPCON BY ITW	1 1/2" MIN.	PT WOOD (SG=.55)	3/4"
D	1/4-14 GR 5 SMS	MIN. 3 THREADS	METAL STRUCTURES	3/4"

### NOTES:

- 1- MINIMUM EMBEDMENT ARE BEYOND WALL DRESSING.
- 2- METAL STRUCTURES ARE TO BE ASTM A36 STEEL OR 6063-T6 ALUMINUM (MIN. 1/8" THICK)
- 3- ANCHOR TYPE D MUST HAVE A MINIMUM 3 THREADS EMBEDMENT PASS SUBSTRATE
- 4- CONCRETE MASONRY UNITS SHALL CONFORM TO ASTM C-90 WITH MINIMUM 2000 PSI
- 5- ANCHORS A, B AND C: YIELD STRENGTH  $F_y = 100$  KSI, ULTIMATE STRENGTH  $F_u = 125$  KSI
- 6- ANCHORS D: YIELD STRENGTH  $F_y = 92$  KSI, ULTIMATE STRENGTH  $F_u = 120$  KSI

PRODUCT REVISED  
as complying with the Florida  
Building Code  
Acceptance No. 18-0201-12  
Expiration Date 6/18/22  
A. Ishug I. Chumb  
Minor Product Changes



PRODUCT:  
SLIDING GLASS DOOR

LARGE & SMALL MISSILE  
IMPACT RATED

MANUFACTURER:  
**SOUTHEASTERN**  
Manufacturers of Impact Resistant Sliding Glass Doors

1505 COMMERCE LANE, JUPITER, FL. 33458  
PHONE: (561) 746-5493 - FAX: (561) 575-1826

SCALE:  
NA

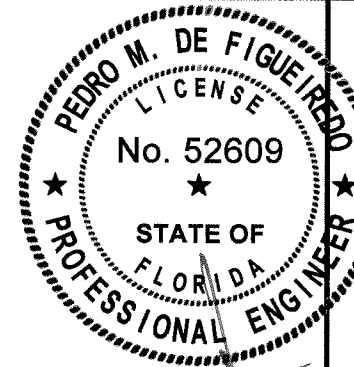
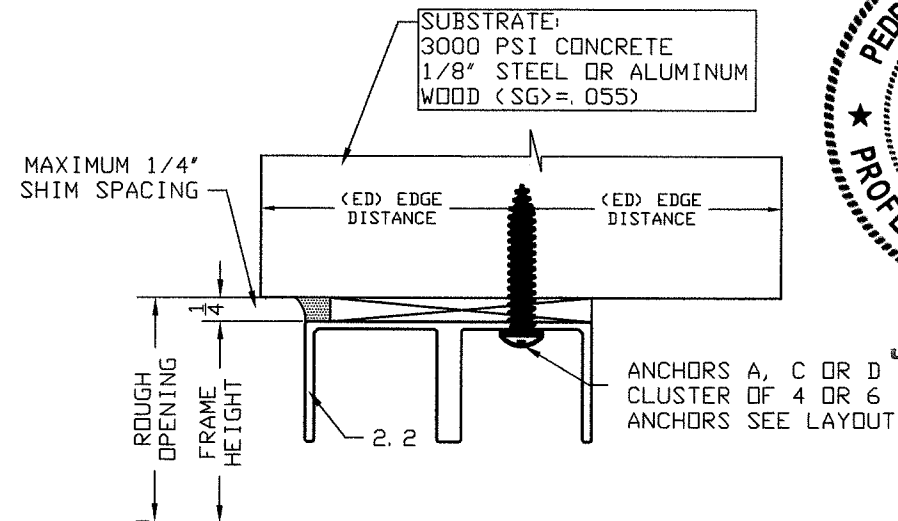
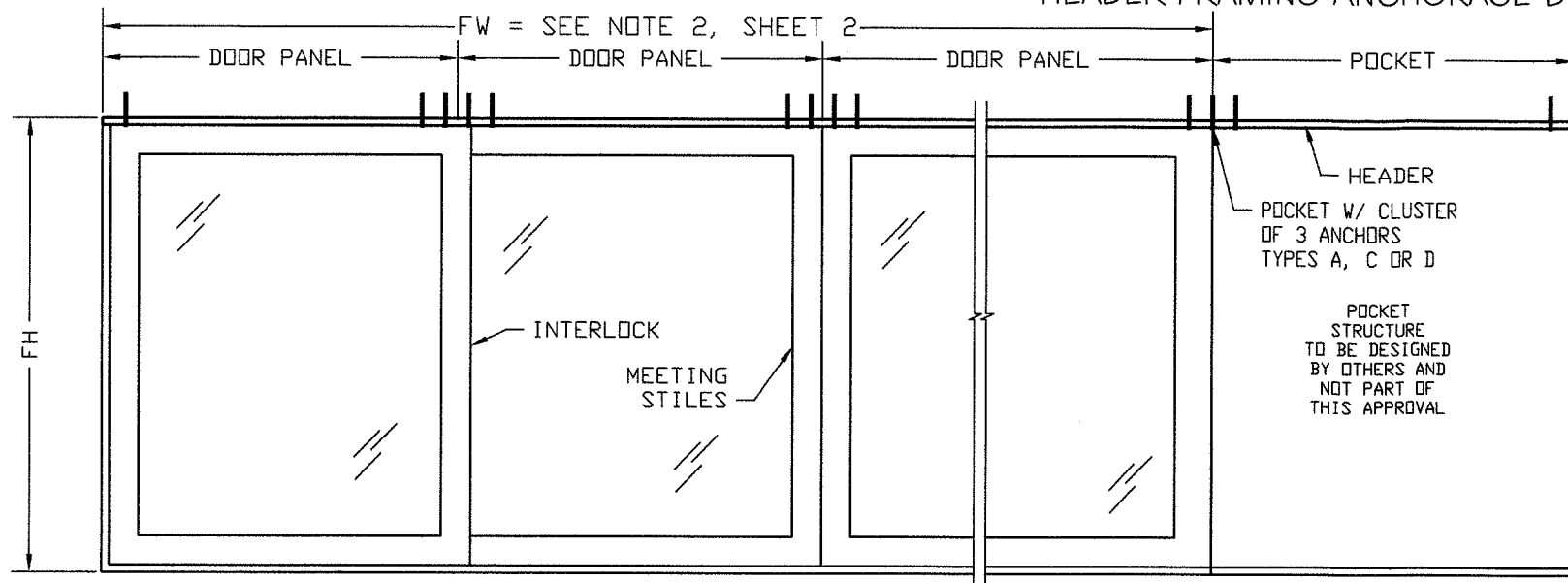
DATE:  
01/28/18

DRAWING #  
18-052

SHEET  
5 OF 11



# HEADER FRAMING ANCHORAGE DETAILS



JAN 29 2018



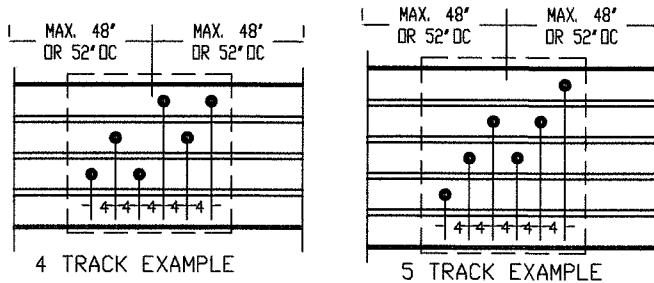
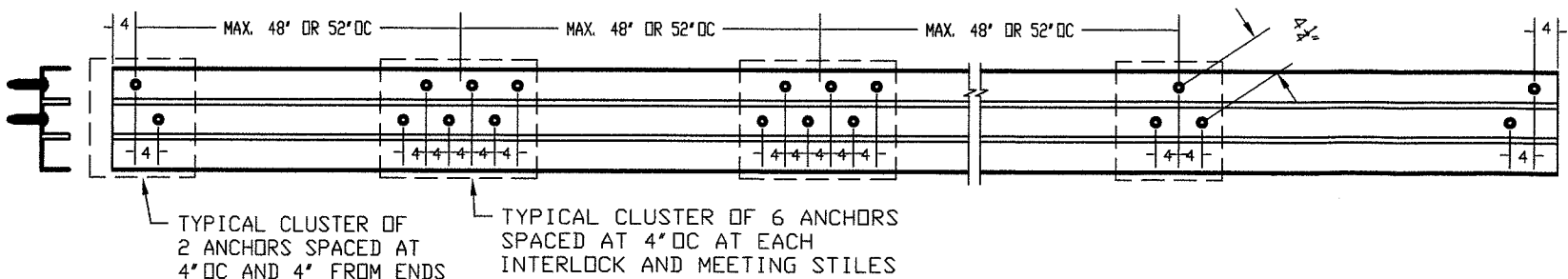
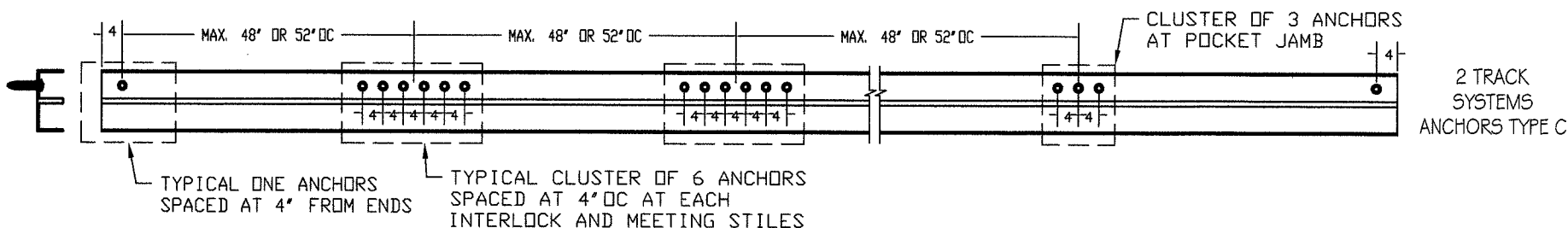
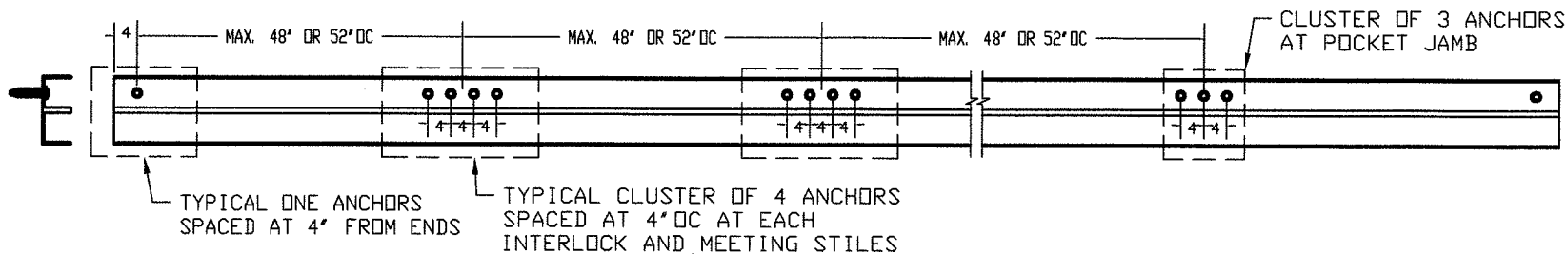
PRODUCT: SLIDING GLASS DOOR

LARGE & SMALL MISSILE  
IMPACT RATED

MANUFACTURER: SOUTHEASTERN  
Manufacturers of Impact Resistant Sliding Glass Doors

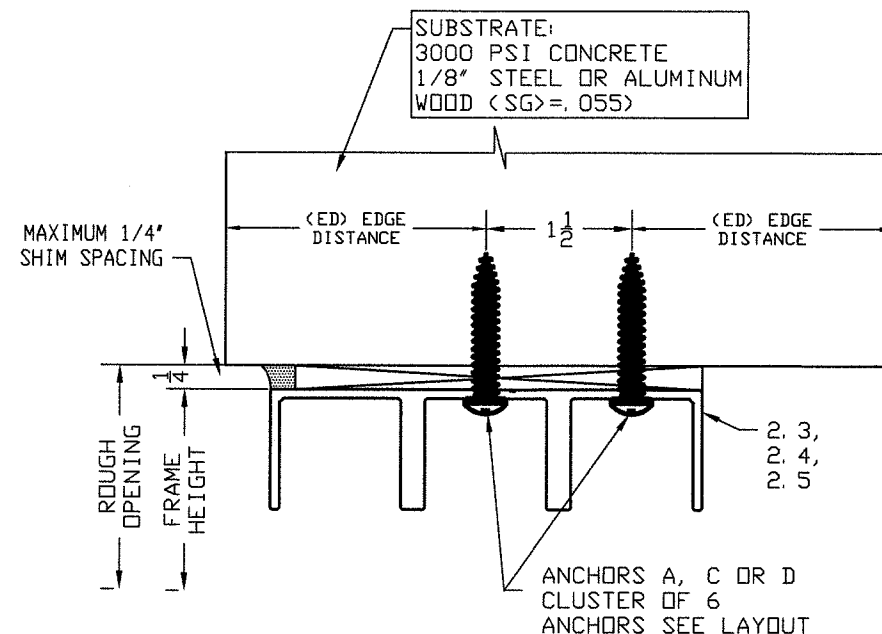
1505 COMMERCE LANE, JUPITER, FL. 33458  
PHONE: (561) 746-5493 - FAX: (561) 575-1826

SCALE: NA  
DATE: 01/28/18  
DRAWING #: 18-052  
SHEET 6 OF 11



NOTE: FOR 2 & 3 TRACKS, ANCHORS CAN BE PLACED IN ANY SECTION OF THE TRACK AS LONG AS THE EDGE DISTANCE IS MAINTAINED

FOR 4 & 5 TRACKS, ANCHORS TO BE PLACED DISTRIBUTED AMONG INNER MOST AND MIDDLE TRACKS. IF EDGE DISTANCE IS BELOW THAN REQUIRED, AVOID ANCHORAGE AT THE OUTERMOST TRACK. (SEE ILLUSTRATION).



FOR INSTALLATION WITH 1X & 2X WOOD BUCK  
WOOD BUCKS TO BE PROVIDED BY OTHERS AND TO BE PROPERLY  
ENGINEERED AND SECURED TO TRANSFER IMPOSED LOADS.

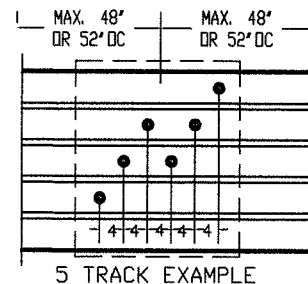
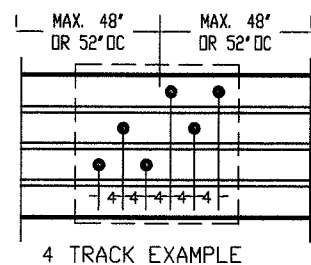
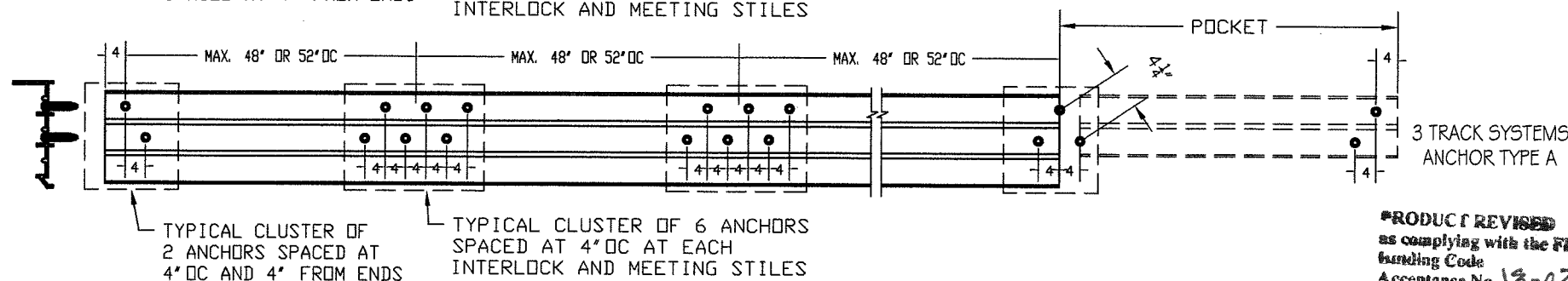
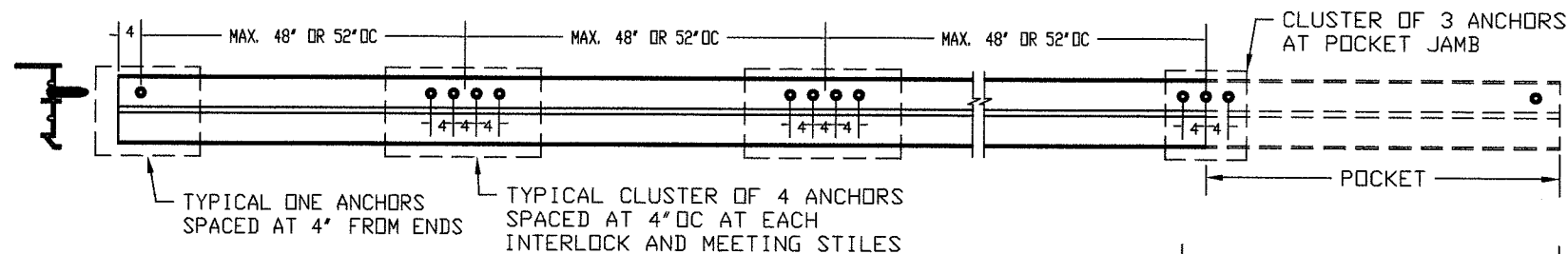
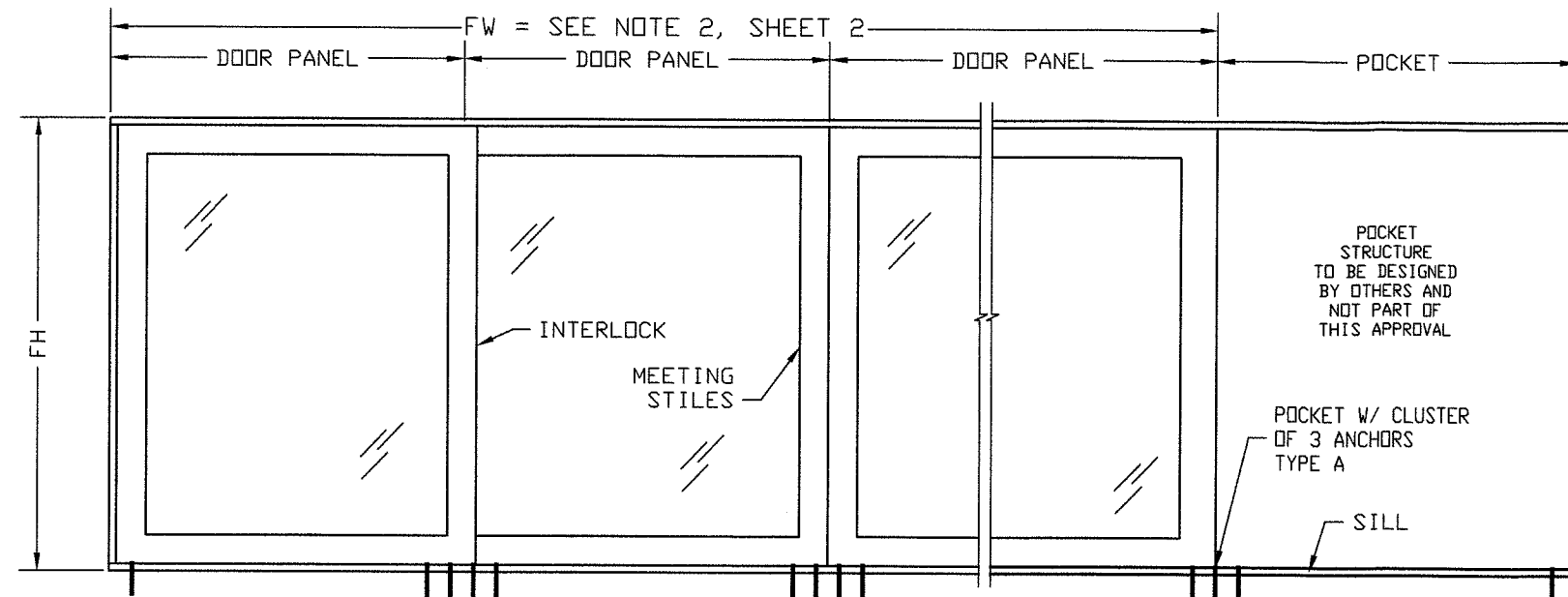
PRODUCT REVISED  
as complying with the Florida  
Building Code  
Acceptance No. 18-0201.12  
Expiration Date 6/8/22  
By: [Signature]  
Title: [Signature]

## ANCHOR SCHEDULE

TYPE	DESCRIPTION	EMBEDMENT	SUBSTRATE	ED
A	1/4" TAPCON BY ITW	1 3/4" MIN.	3000 psi CONCRETE	3"
C	1/4" TAPCON BY ITW	1 1/2" MIN.	PT WOOD (SG=.55)	3/4"
D	1/4"-14 GR 5 SMS	MIN. 3 THREADS	METAL STRUCTURES	3/4"

- NOTES:
- 1- MINIMUM EMBEDMENT ARE BEYOND WALL DRESSING.
  - 2- METAL STRUCTURES ARE TO BE ASTM A36 STEEL OR 6063-T6 ALUMINUM (MIN. 1/8" THICK)
  - 3- ANCHOR TYPE D MUST HAVE A MINIMUM 3 THREADS EMBEDMENT PASS SUBSTRATE
  - 4- ANCHORS A AND C: YIELD STRENGTH  $F_y=100$  KSI, ULTIMATE STRENGTH  $F_u=125$  KSI
  - 5- ANCHORS D: YIELD STRENGTH  $F_y=92$  KSI, ULTIMATE STRENGTH  $F_u=120$  KSI

# SILL FRAMING ANCHORAGE DETAILS



NOTE: FOR 2 & 3 TRACKS, ANCHORS CAN BE PLACED IN ANY SECTION OF THE TRACK AS LONG AS THE EDGE DISTANCE IS MAINTAINED

FOR 4 & 5 TRACKS, ANCHORS TO BE PLACED DISTRIBUTED AMONG INNER MOST AND MIDDLE TRACKS. IF EDGE DISTANCE IS BELOW THAN REQUIRED, AVOID ANCHORAGE AT THE OUTERMOST TRACK. (SEE ILLUSTRATION).

## ANCHOR SCHEDULE

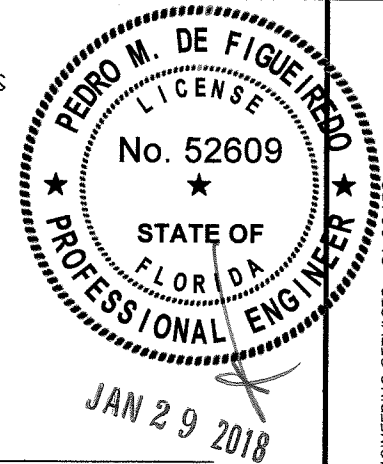
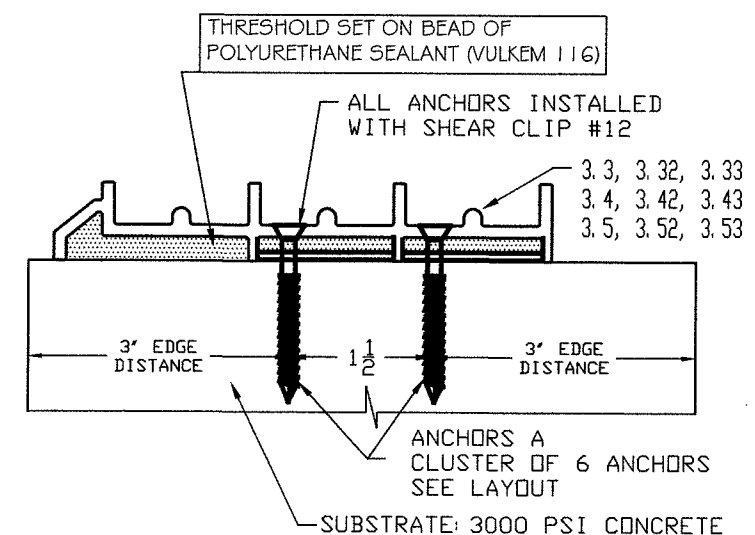
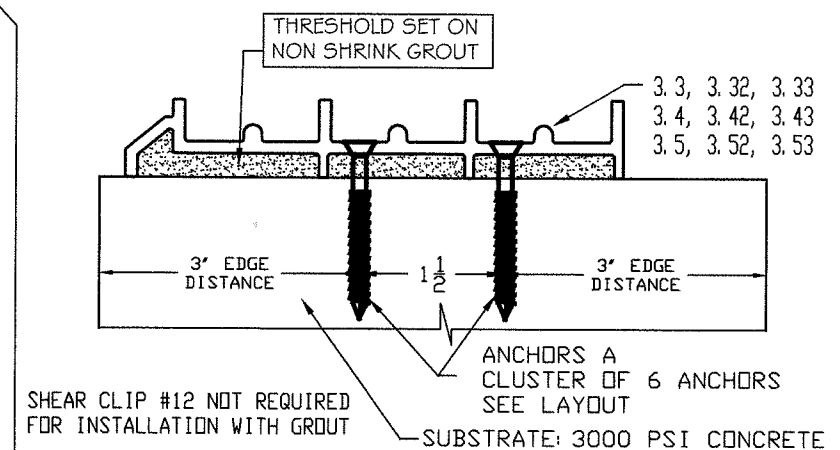
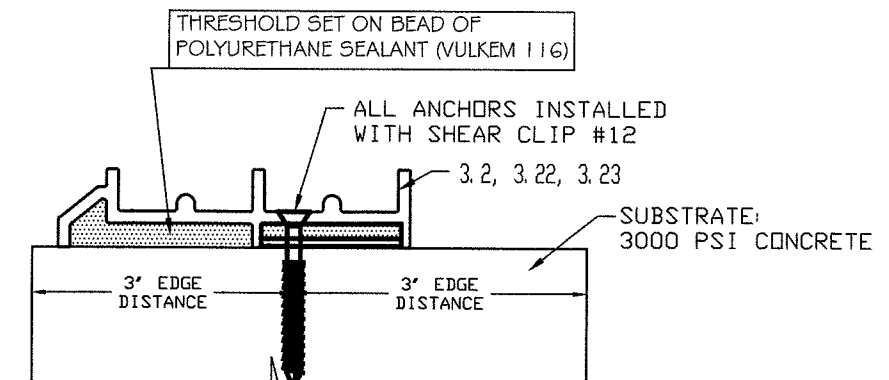
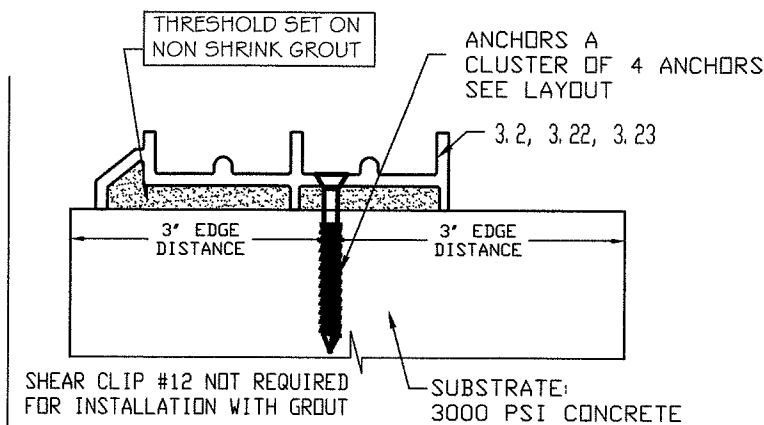
TYPE	DESCRIPTION	EMBEDMENT	SUBSTRATE	ED
A	1/4" TAPCON BY ITW	1 3/4" MIN.	3000 psi CONCRETE	3"

## NOTES:

1- MINIMUM EMBEDMENT ARE BEYOND WALL DRESSING.

2- ANCHORS A: YIELD STRENGTH  $F_y = 100$  KSI, ULTIMATE STRENGTH  $F_u = 125$  KSI

FOR INSTALLATION WITH 1X # 2X WOOD BUCK  
WOOD BUCKS TO BE PROVIDED BY OTHERS AND TO BE PROPERLY  
ENGINEERED AND SECURED TO TRANSFER IMPOSED LOADS.



ENGINEERING SERVICES - CA 32459  
9715 W. BROWARD BLVD.  
PLANTATION, FL 33324  
PPMF@AOL.COM  
ENGINEER SEAL  
PEDRO DE FIGUEIREDO  
PE 52609



PRODUCT: SLIDING GLASS DOOR

LARGE & SMALL MISSILE  
IMPACT RATED

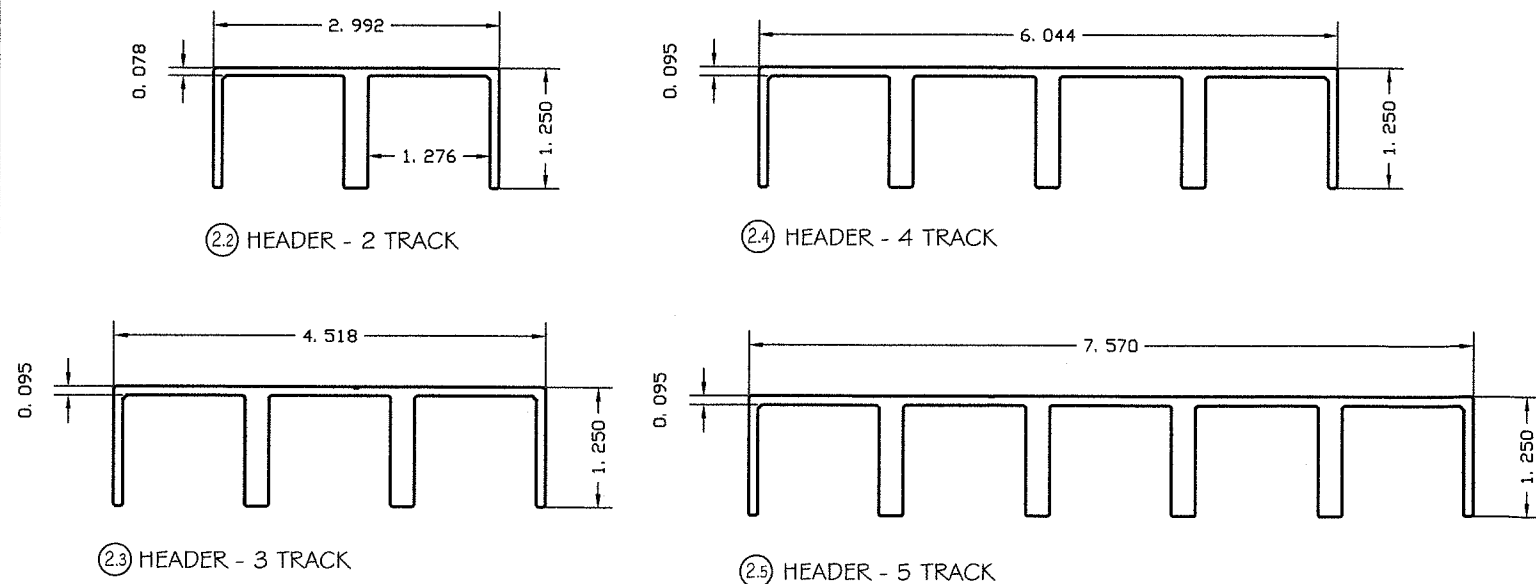
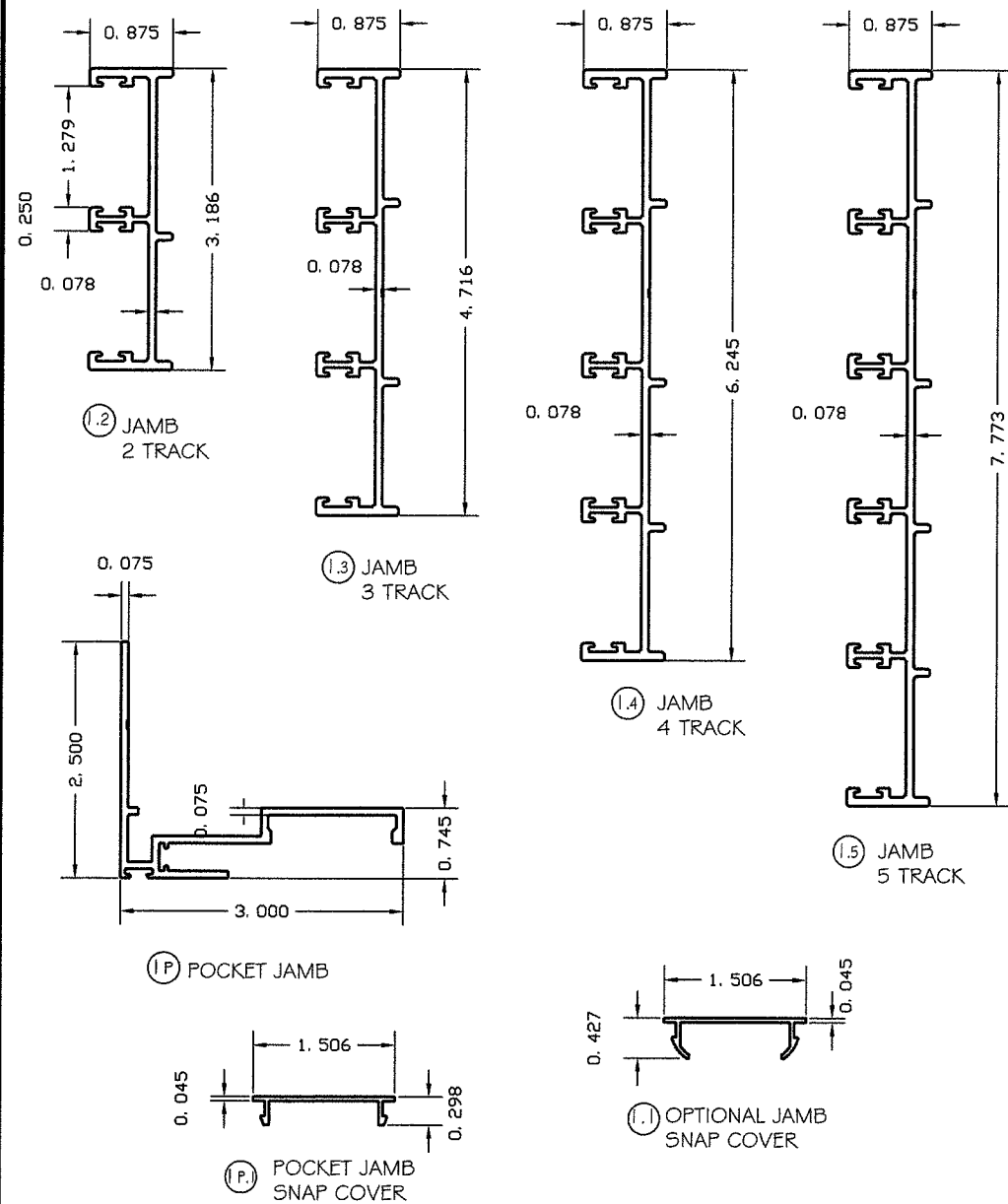
MANUFACTURER: SOUTHEASTERN  
Manufacturers of Impact Resistant Sliding Glass Doors  
1505 COMMERCE LANE, JUPITER, FL 33458  
PHONE: (561) 746-5493 - FAX: (561) 575-1826

SCALE:  
NA

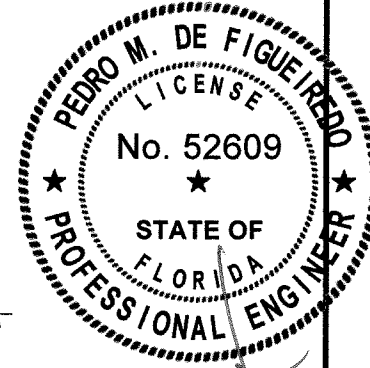
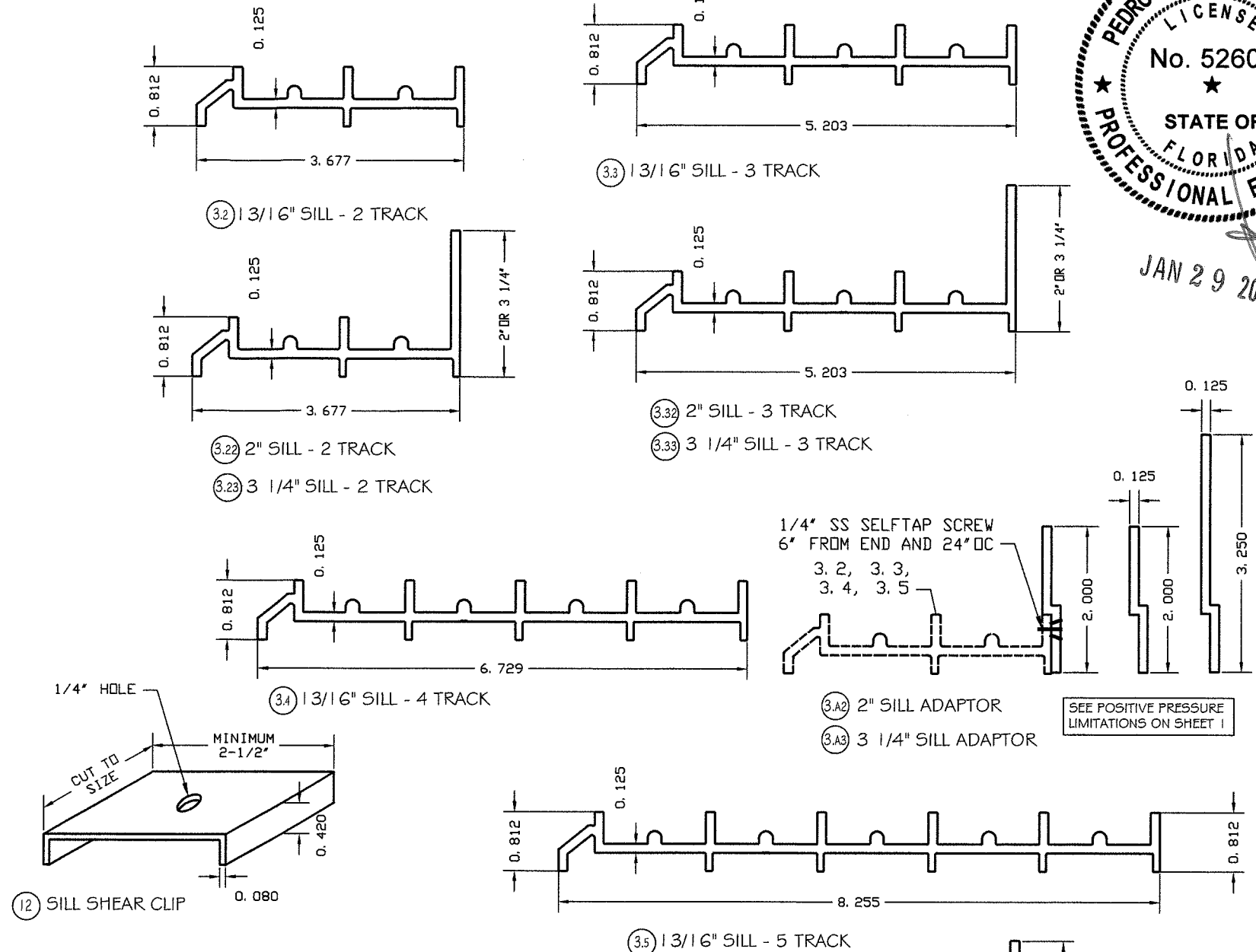
DATE:  
01/28/18

DRAWING #  
18-052

SHEET  
7 OF 11



## FRAME COMPONENTS



JAN 29 2018



PRODUCT:  
SLIDING GLASS DOOR

LARGE & SMALL MISSILE  
IMPACT RATED

MANUFACTURER:  
**SOUTHEASTERN**  
Manufacturers of Impact Resistant Sliding Glass Doors

1505 COMMERCE LANE, JUPITER, FL 33458  
PHONE: (561) 746-5493 - FAX: (561) 575-1826

SCALE:  
NA

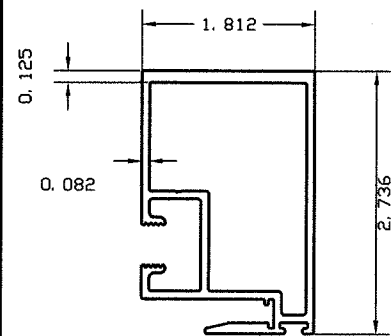
DATE:  
01/28/18

DRAWING #  
18-052

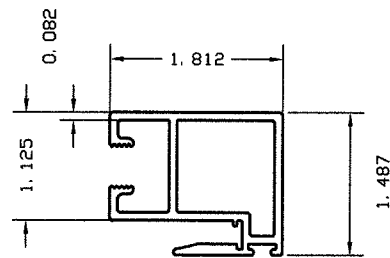
SHEET  
8 OF 11

\*PRODUCT REVISED  
as complying with the Florida  
Building Code  
Acceptance No. 15-0201.12  
Expiration Date 6/18/23  
A. Ishaghi, Chaudhry  
Product Control

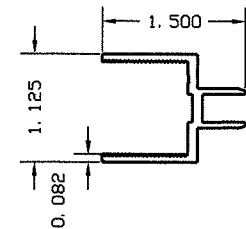
## PANEL COMPONENTS



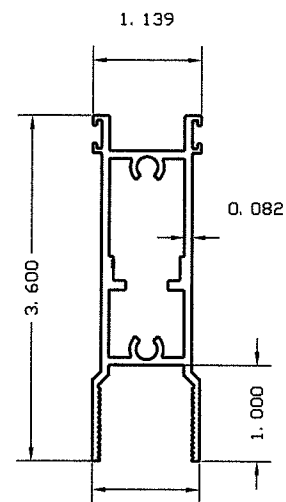
④ ATLAS INTERLOCK



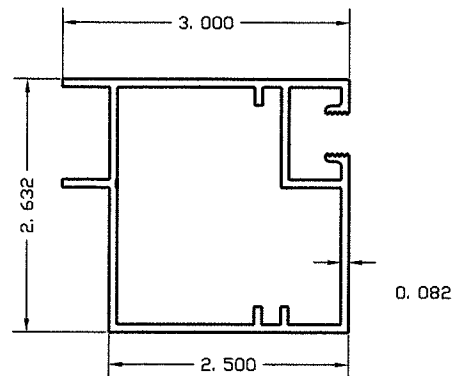
⑤ ATLAS NARROW INTERLOCK STILE



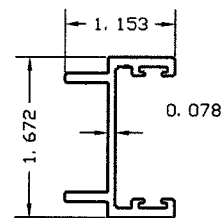
⑧ GLAZING ADAPTER



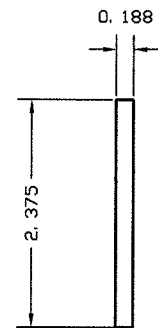
⑨ ATLAS DOOR TOP / BOTTOM RAIL



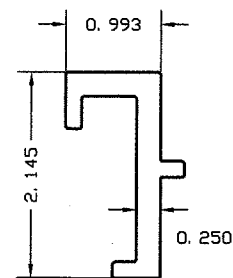
⑥ ATLAS DOOR END RAIL



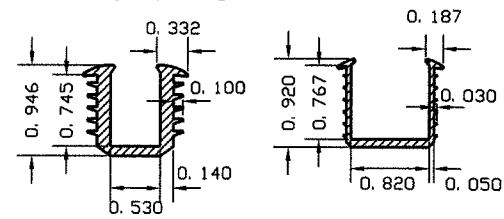
⑦ ATLAS DOOR ASTRAGAL  
(4) #10X1 1/2" SS SMS  
SECURING ASTRAGAL TO  
DOOR END RAIL 6" FROM  
TOP AND BOTTOM AND 6"  
FROM KEEPER



⑩ DOOR END RAIL  
REINFORCEMENT  
LENGT=FM-2 1/16

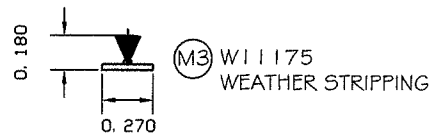


⑪ INTERLOCK  
REINFORCEMENT  
LENGT=FM-2 1/16

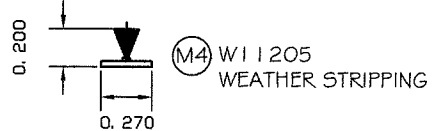


① 1/2" GLAZING CHANNEL

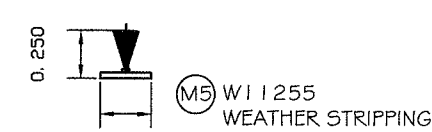
② 13/16" GLAZING CHANNEL



③ W11175 WEATHER STRIPPING



④ W11205 WEATHER STRIPPING



⑤ W11255 WEATHER STRIPPING

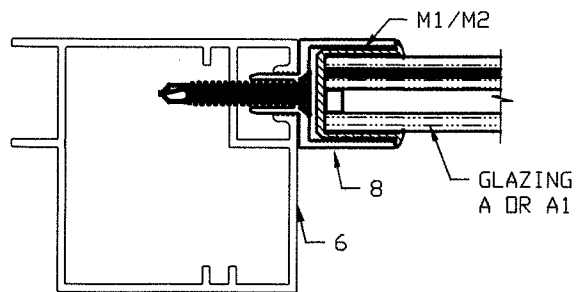


⑥ BULB VINYL

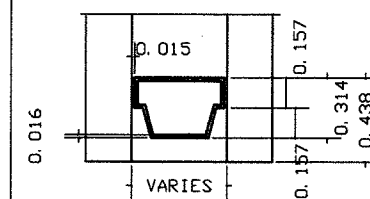
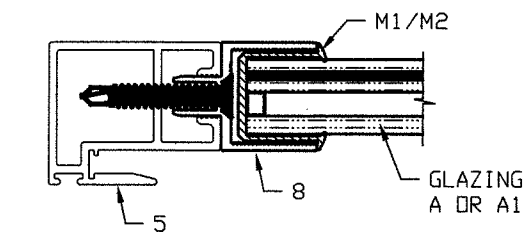
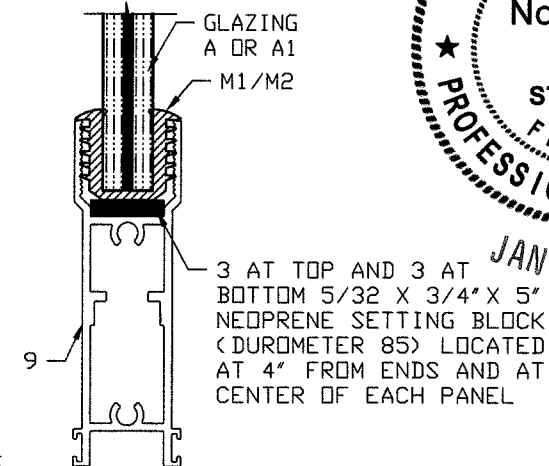
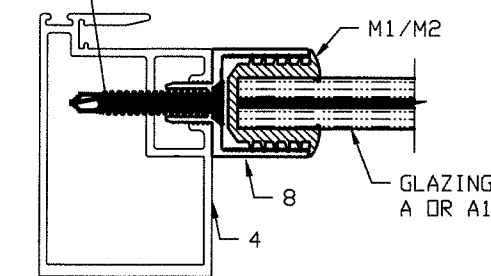


⑦ 1"X1" DUST PLUG

## GLAZING CONFIGURATIONS



TYPICAL GLAZING ADAPTOR (#8)  
ATTACHMENT TO VERTICAL RAILS WITH  
#10 X 1 1/2" SS STFH SCREWS  
LOCATED 1" FROM THE ENDS AND 24" OC



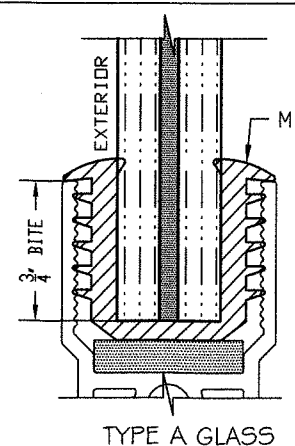
INSULATED GLAZING PANELS WITH ANODIZED ALUMINUM  
SPACER WITH DESICCANT LOOSE FILL SETTING ON AND  
LINED WITH BUTYL RUBBER SEALANT

### TYPE A GLASS: LARGE MISSILE IMPACT

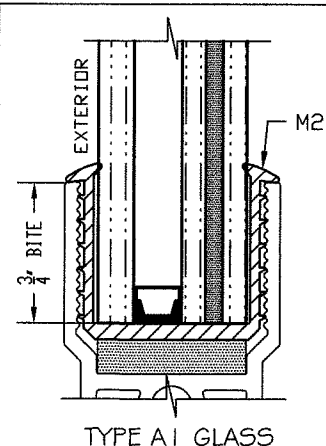
9/16" LAMINATED HS CONFIGURED:  
EXTERIOR LITE: 1/4" HS  
INTERLAYER: 0.090" SGP INTERLAYER BY KURARAY  
INTERIOR LITE: 1/4" HS

### TYPE A1 GLASS: LARGE MISSILE IMPACT

3/4" INSULATED GLASS CONFIGURED:  
EXTERIOR LITE: 3/16" FT  
AIR SPACE: 1/4"  
2ND LITE: 1/8" HS  
INTERLAYER: 0.090" SGP INTERLAYER BY KURARAY  
INTERIOR LITE: 1/8" HS



TYPE A GLASS

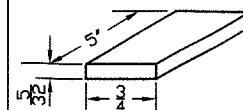


TYPE A1 GLASS

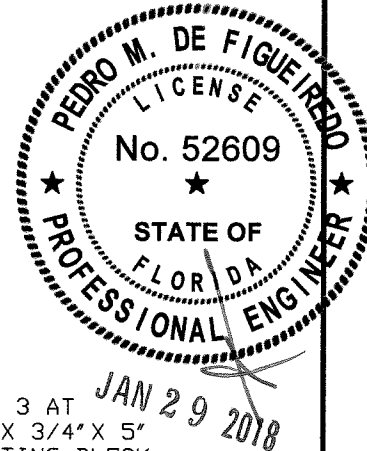
"A & A1" GLAZING  
PRESSURE: +65 PSF, -75 PSF  
MAXIMUM DLO: 46 5/8" X 94 1/16"

"A" GLAZING  
PRESSURE: +50 PSF, -50 PSF  
MAXIMUM DLO: 42 5/8" X 111 9/16"

PRODUCT REVIEWED  
as complying with the Florida  
Building Code  
Acceptance No. 18-0201-12  
Expiration Date 6/8/22  
A. Shugart  
Manufacturer Product Control



SETTING BLOCK: 3 PER PANEL  
NEOPRENE, DUROMETER 85 AT 4" FROM ENDS AND AT CENTER OF EACH PANEL



ENGINEERING SERVICES - CA 32459  
9715 W. BROWARD BLVD.  
PLANTATION, FL 33324  
PPMF@AOL.COM  
ENGINEER SEAL  
PEDRO DE FIGUEIREDO  
PE 52609



PRODUCT:  
SLIDING GLASS DOOR

LARGE & SMALL MISSILE  
IMPACT RATED

MANUFACTURER:  
**SOUTHEASTERN**  
Manufacturers of Impact Resistant Sliding Glass Doors

1505 COMMERCE LANE, JUPITER, FL 33458  
PHONE: (561) 746-5493 - FAX: (561) 575-1826

SCALE:  
NA

DATE:  
01/28/18

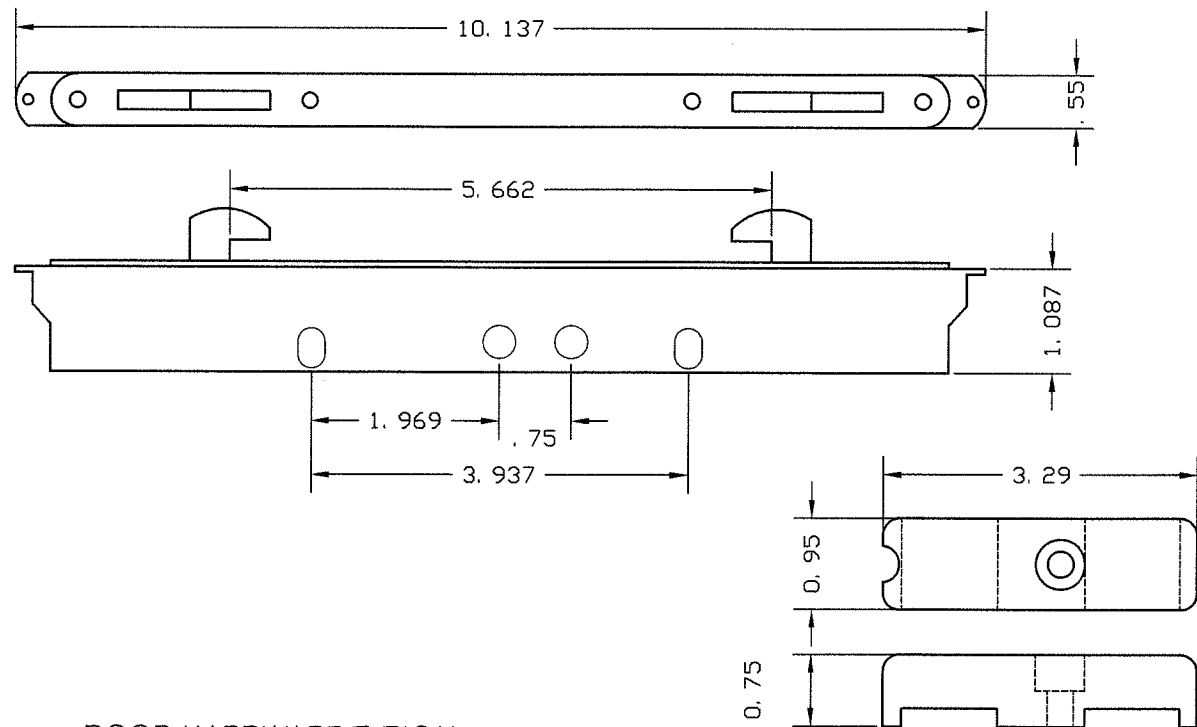
DRAWING #  
18-052

SHEET  
9 OF 11

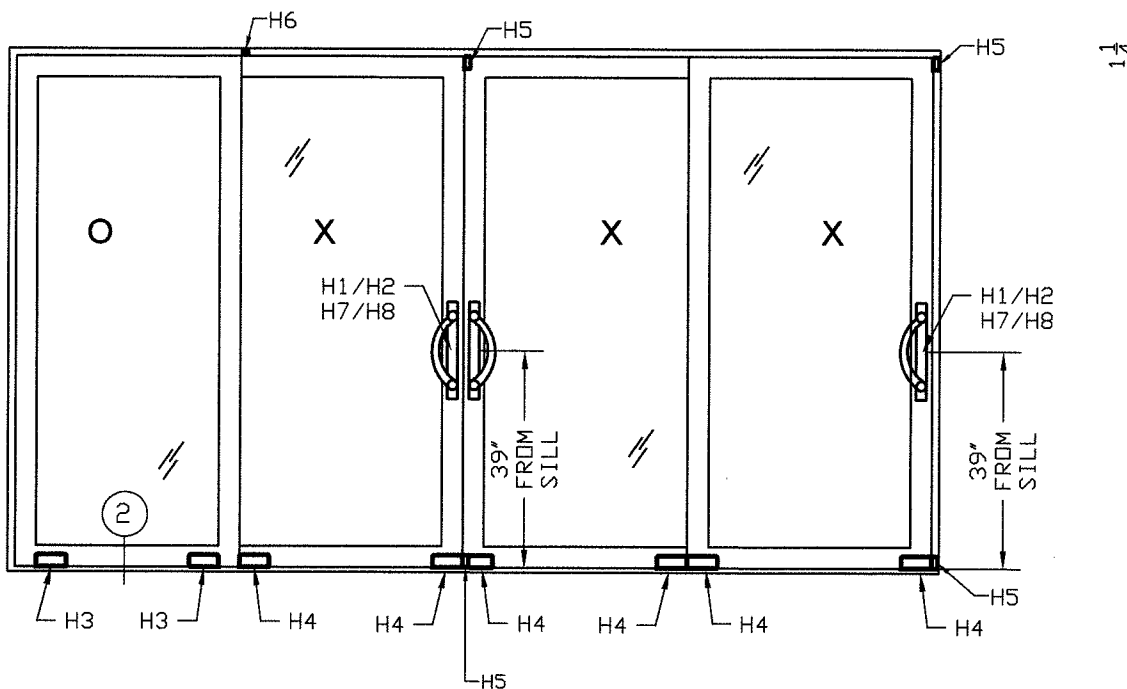
# PANEL HARDWARE

## (H1) 2 POINT DEAD LOCK

1 MULTIPoint MORTISE (18-8 SS) LOCK PER LOCK MEETING STILE  
HARDWARE SUPPLIER: AMESBURY  
PART #2815-84  
ATTACHED TO THE DOOR WITH (2) #6X 1/4" SS FLAT HEAD SCREWS.



DOOR HARDWARE TYPICAL

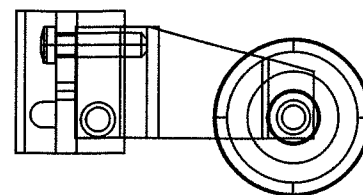
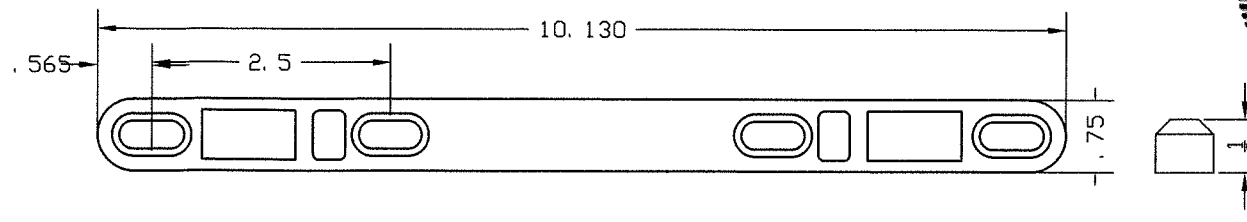


H5- ACTIVE DOOR STILE BUMPER  
2 PER EACH LOCKING STILE SECURED TO THE TOP AND BOTTOM OF THE VERTICAL LOCKING STILE WITH (1) 1/4" SMS

H6- 1/8-1X1 FIXED PANEL HOLD CLIP  
1 PER EACH FIXED PANEL SECURED ONLY TO THE TOP HEADER WITH (1) #8 SMS.

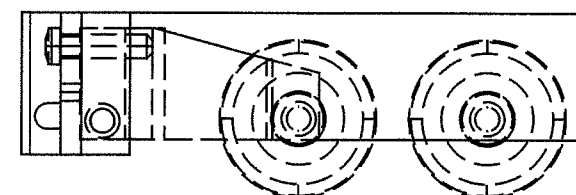
## (H2) 2 POINT DEAD LOCK STRIKE PLATE

1 KEEPER PER MEETING STILE OR JAMB  
HARDWARE SUPPLIER: AMESBURY  
PART #2470-84  
ATTACHED AT JAMB OR ASTRAGAL RAIL  
USING FOUR W/ #10-16X 1-1/2" PHSMS.



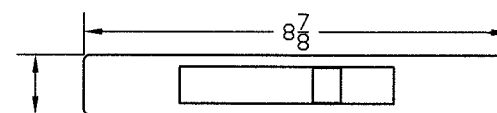
## (H3) SINGLE WHEEL ASSEMBLY

2 PER FIXED DOOR PANEL  
HARDWARE SUPPLIER: AMESBURY  
PART #1966-7000-12  
ADJUSTABLE 1 11/16" DIAMETER NYLON ROLLER  
ASSEMBLY WITH ALUMINUM HOUSING ATTACHED TO  
THE BOTTOM RAIL USING ONE 1/4"X1 SS ROD.

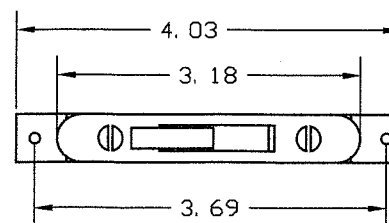


## (H4) TANDEM WHEEL ASSEMBLY

2 PER OPERABLE DOOR PANEL  
HARDWARE SUPPLIER: AMESBURY  
PART #1966-7501-14  
ADJUSTABLE 1 11/16" DIAMETER NYLON ROLLER  
ASSEMBLY WITH ALUMINUM HOUSING ATTACHED TO  
THE BOTTOM RAIL USING ONE 1/4"X1 SS ROD.

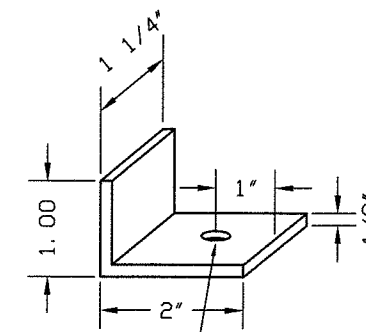
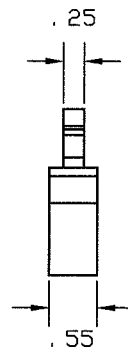


## (H9) RECESSED PULL HANDLE ADAMS RITE 4431



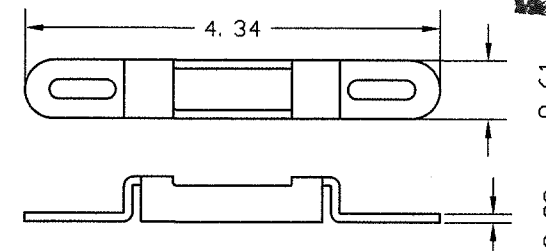
## (H7) SINGLE DEAD LOCK (SS)

1 LOCK PER LOCK MEETING STILE  
HARDWARE SUPPLIER: AMESBURY  
PART #537-84  
ATTACHED TO THE DOOR WITH  
(2) #6X 1/4" SS FLAT HEAD SCREWS.



(1) #8X1/2 SMS SECURING  
CLIP TO HEADER

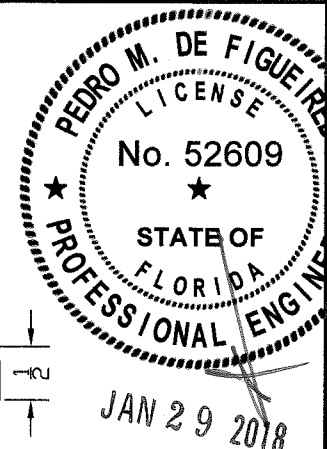
## (H6) FIXED PANEL HOLD CLIP 6063-T6 1/8" THICK ALUMINUM ANGLE



## (H8) SINGLE DEAD LOCK STRIKE PLATE (SS)

1 PLATE PER LOCK  
HARDWARE SUPPLIER: AMESBURY  
PART #537-84  
ATTACHED TO THE DOOR WITH (2) #10-16" SS FH SMS

PRODUCT REVISION  
as complying with the Florida  
Building Code  
Acceptance No. 18-020112  
Expiration Date 6/8/22  
Ishag J. Chant  
Manufacture Date Product Control



PRODUCT:  
SLIDING GLASS DOOR

LARGE & SMALL MISSILE  
IMPACT RATED

MANUFACTURER:  
**SOUTHEASTERN**  
Manufacturers of Impact Resistant Sliding Glass Doors

1505 COMMERCE LANE, JUPITER, FL. 33458  
PHONE: (561) 746-5493 - FAX: (561) 575-1826

SCALE:  
NA

DATE:  
01/28/18

DRAWING #  
18-052

SHEET  
10 OF 11



ENGINEERING SERVICES - CA 32459  
9715 W. BROWARD BLVD.  
PLANTATION, FL 33324  
PPMF@AOL.COM  
ENGINEER SEAL  
PEDRO DE FIGUEIREDO  
PE 52609

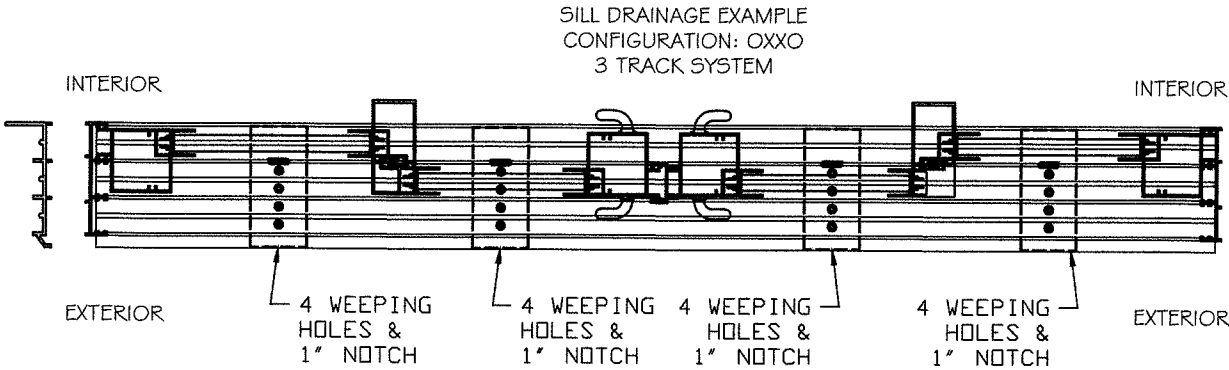
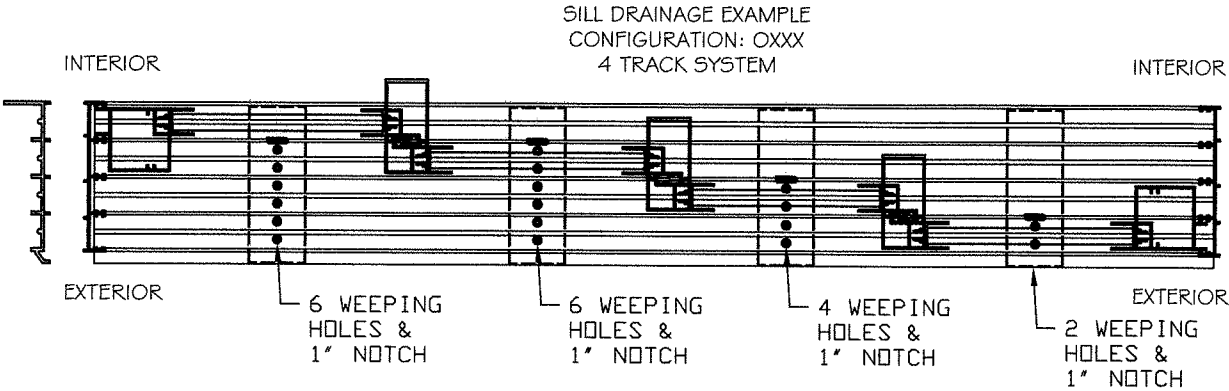
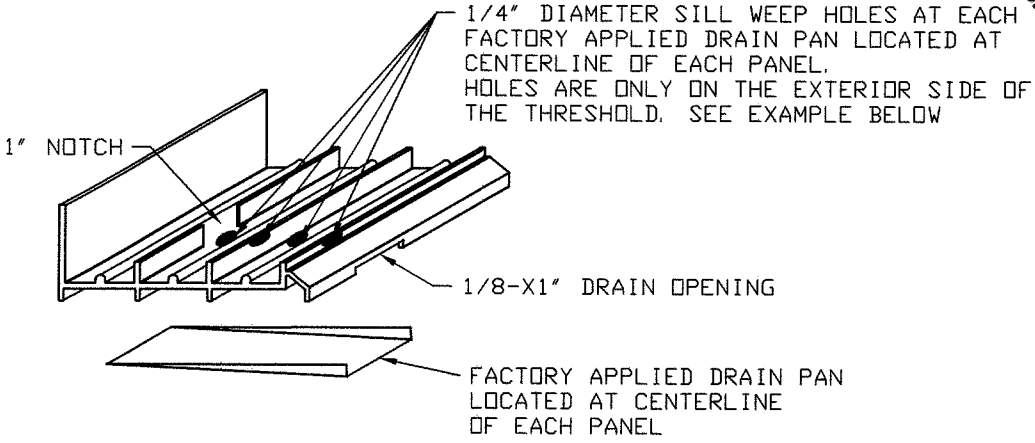
LIST OF COMPONENTS

ITEM	DESCRIPTION	MATERIAL	SUPPLIER
1	JAMB FRAMING & ACCESSORIES		
1.1	OPTIONAL JAMB SNAP COVER	6063-T5 ALUMINUM	SOUTHEASTERN DOOR COMPANY
1.2	2 TRACK - JAMB FRAME	6063-T6 ALUMINUM	SOUTHEASTERN DOOR COMPANY
1.3	3 TRACK - JAMB FRAME	6063-T6 ALUMINUM	SOUTHEASTERN DOOR COMPANY
1.4	4 TRACK - JAMB FRAME	6063-T6 ALUMINUM	SOUTHEASTERN DOOR COMPANY
1.5	5 TRACK - JAMB FRAME	6063-T6 ALUMINUM	SOUTHEASTERN DOOR COMPANY
1P	POCKET JAMB	6063-T6 ALUMINUM	SOUTHEASTERN DOOR COMPANY
1P.1	POCKET JAMB SNAP COVER	6063-T5 ALUMINUM	SOUTHEASTERN DOOR COMPANY
2	HEADER FRAMING		
2.2	2 TRACK - HEADER FRAME	6063-T6 ALUMINUM	SOUTHEASTERN DOOR COMPANY
2.3	3 TRACK - HEADER FRAME	6063-T6 ALUMINUM	SOUTHEASTERN DOOR COMPANY
2.4	4 TRACK - HEADER FRAME	6063-T6 ALUMINUM	SOUTHEASTERN DOOR COMPANY
2.5	5 TRACK - HEADER FRAME	6063-T6 ALUMINUM	SOUTHEASTERN DOOR COMPANY
3	SILL FRAMING		
3.2	2 TRACK - 13/16" SILL FRAME	6063-T6 ALUMINUM	SOUTHEASTERN DOOR COMPANY
3.22	2 TRACK - 2" SILL FRAME	6063-T6 ALUMINUM	SOUTHEASTERN DOOR COMPANY
3.23	2 TRACK - 3 1/4" SILL FRAME	6063-T6 ALUMINUM	SOUTHEASTERN DOOR COMPANY
3.3	3 TRACK - 13/16" SILL FRAME	6063-T6 ALUMINUM	SOUTHEASTERN DOOR COMPANY
3.32	3 TRACK - 2" SILL FRAME	6063-T6 ALUMINUM	SOUTHEASTERN DOOR COMPANY
3.33	3 TRACK - 3 1/4" SILL FRAME	6063-T6 ALUMINUM	SOUTHEASTERN DOOR COMPANY
3.4	4 TRACK - 13/16" SILL FRAME	6063-T6 ALUMINUM	SOUTHEASTERN DOOR COMPANY
3.42	4 TRACK - 2" SILL FRAME	6063-T6 ALUMINUM	SOUTHEASTERN DOOR COMPANY
3.43	4 TRACK - 3 1/4" SILL FRAME	6063-T6 ALUMINUM	SOUTHEASTERN DOOR COMPANY
3.5	5 TRACK - 13/16" SILL FRAME	6063-T6 ALUMINUM	SOUTHEASTERN DOOR COMPANY
3.52	5 TRACK - 2" SILL FRAME	6063-T6 ALUMINUM	SOUTHEASTERN DOOR COMPANY
3.53	5 TRACK - 3 1/4" SILL FRAME	6063-T6 ALUMINUM	SOUTHEASTERN DOOR COMPANY
3.A2	2" SILL ADAPTOR	6063-T6 ALUMINUM	SOUTHEASTERN DOOR COMPANY
3.A3	3 1/4" SILL ADAPTOR	6063-T6 ALUMINUM	SOUTHEASTERN DOOR COMPANY
4	ATLAS INTERLOCK STILE	6063-T6 ALUMINUM	SOUTHEASTERN DOOR COMPANY
5	ATLAS NARROW INTERLOCK STILE	6063-T6 ALUMINUM	SOUTHEASTERN DOOR COMPANY
6	ATLAS DOOR END RAIL	6063-T6 ALUMINUM	SOUTHEASTERN DOOR COMPANY
7	ATLAS DOOR ASTRAGAL	6063-T6 ALUMINUM	SOUTHEASTERN DOOR COMPANY
8	GLAZING ADAPTOR	6063-T6 ALUMINUM	SOUTHEASTERN DOOR COMPANY
9	ATLAS DOOR TOP / BOTTOM RAIL	6063-T6 ALUMINUM	SOUTHEASTERN DOOR COMPANY
10	END RAIL REINFORCEMENT	6063-T6 ALUMINUM	SOUTHEASTERN DOOR COMPANY
11	INTERLOCK REINFORCEMENT	6063-T6 ALUMINUM	SOUTHEASTERN DOOR COMPANY
12	SILL SHEAR CLIP	6063-T6 ALUMINUM	SOUTHEASTERN DOOR COMPANY

ITEM	DESCRIPTION	MATERIAL	SUPPLIER
M1	1/2" GLAZING GASKET	PVC	TEAM PLASTICS INC
M2	13/16" GLAZING GASKET	PVC	TEAM PLASTICS INC
M3	W11175 PILE WEATHER STRIPPING		ULTRAFAB
M4	W11205 PILE WEATHER STRIPPING		ULTRAFAB
M5	W11255 PILE WEATHER STRIPPING		ULTRAFAB
M6	BULB VINYL	NEOPRENE	ULTRAFAB
M7	DUST PLUG		ULTRAFAB

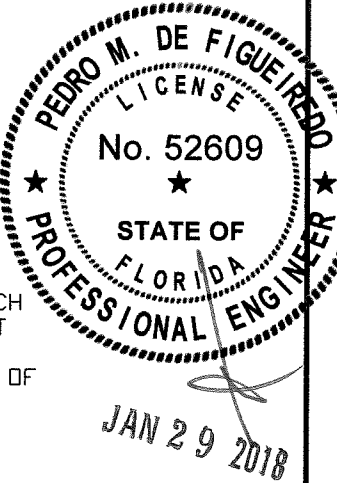
ITEM	DESCRIPTION	MATERIAL	SUPPLIER
H1	2 POINT DEAD LOCK	STAINLESS STEEL	AMESBURY
H2	2 POINT LOCK STRIKE PLATE	STAINLESS STEEL	AMESBURY
H3	SINGLE WHEEL ASSEMBLY	ALUM. / NYLON	AMESBURY
H4	TANDEM WHEEL ASSEMBLY	ALUM. / NYLON	AMESBURY
H5	DOOR BUMPER	80 SHORE A NBR.	FRANK LOWE RUBBER & GASKER CO.
H6	FIXED PANEL HOLD CLIP W/ #8 SCREW	6063-T6 ALUMINUM	SOUTHEASTERN DOOR COMPANY
H7	SINGLE DEAD LOCK	STAINLESS STEEL	AMESBURY
H8	SINGLE STRIKE PLATE	STAINLESS STEEL	AMESBURY
H9	RECESSED PULL HANDLE	CAST ALUMINUM	ADAMS RITE

SILL DRAINAGE



DRAINAGE NOTE:  
WEEP HOLES ARE INSTALLED UNDER ALL PANELS EXCEPT IN THE INNER TRACK

PRODUCT REVIEWED  
as complying with the Florida  
Building Code  
Acceptance No. 18-0201.12  
Expiration Date JUNE 08, 2022  
By: [Signature]  
Title: Single Product Checked



PRODUCT: SLIDING GLASS DOOR

MANUFACTURER: SOUTHEASTERN  
Manufacturers of Impact Resistant Sliding Glass Doors

SCALE: NA  
DATE: 01/28/18  
DRAWING #: 18-052  
SHEET: 11 OF 11

LARGE & SMALL MISSILE  
IMPACT RATED

1505 COMMERCE LANE, JUPITER, FL. 33458  
PHONE: (561) 748-5493 - FAX: (561) 575-1826

ENGINEER SEAL  
PEDRO DE FIGUEIREDO  
PE 52609

ENGINEERING SERVICES - CA 32459  
9715 W. BROWARD BLVD.  
PLANTATION, FL 33324  
PPMF@AOL.COM