

SOUTHEASTERN DOOR COMPANY

Manufacturers of Aluminum Sliding Glass Doors

ATLAS HP IMPACT

SLIDING GLASS DOOR SYSTEM



Satisfaction Guaranteed...



1505 COMMERCE LANE JUPITER, FL 33458 PHONE: (561) 746-5493 FAX: (561) 575-1826

VISIT OUR WEBSITE: www.southeasterndoor.com

Southeastern Door Company is a highly reliable Manufacturer of fine quality Sliding Glass Doors. Our 40 years of experience is what distinguishes us from competitors. Recognizable craftsmanship, visibly appealing design and extreme durability makes us better. Our doors are ideal for luxury homes and condominium replacement markets.

ENERGY EFFICIENCY

Our 9/16" Impact door meets Florida Energy Code SHGC requirements using Low-E glass. Impact insulated is available to offer better performing U-value and SHGC. Low-e coatings reduce heat transfer through the glass which is beneficial in warmer climates.



HARDWARE & COMPONENTS

Our doors are assembled with the highest grade of materials available.

Handle options include Allure, Olympus and Signature series offered in a variety of paint or metal finishes. Allure handle is aluminum which makes it ideal for high corrosive environments. Olympus handle has exceptional hand clearance. Signature handle is a contemporary design and available in several decorative finishes.



Tandem Roller

Roller designed to operate with ease while providing long lasting durability. This effortless motion is attributed to a unique combination of high quality tandem Delrin rollers and stainless steel bearings encased in aluminum housing.

FINISHES

Doors offered in White, Bronze and Clear Anodized. High performance powder coat to meet AAMA 2603.

Custom wood grain and two-tone finishes available.



White



Bronze



Anodized

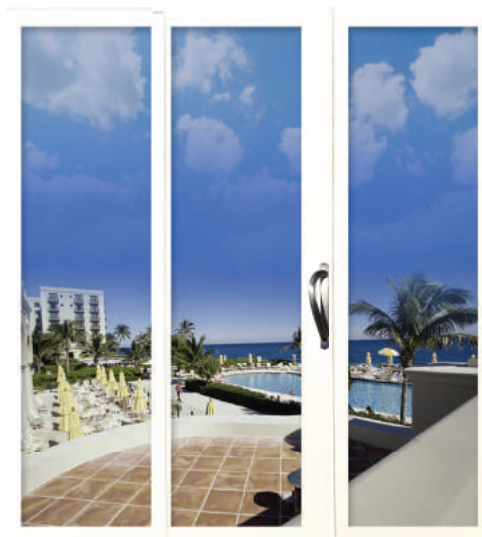


Wood Grain



HURRICANE PROTECTION

Our Hurricane rated Sliding Glass Door exceeds the stringent Florida and Miami-Dade building codes. Other benefits include 99% UV protection, noise reduction, security and effortless storm protection. Senty-Glas outperforms other products with excellent clarity and industry best warranty.



"Our doors allow significantly more glass viewing area than our competitor's unsightly wide door rails"



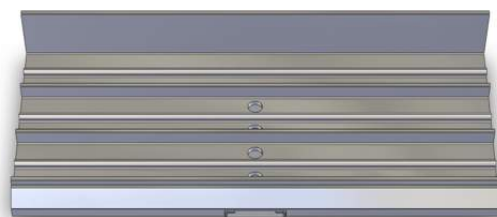
18-0201.12

PRODUCT SERIES

| | |
|--------------------------------|------------|
| Atlas HP- Impact Insulated LMI | 18-0201.12 |
| Atlas HP- 9/16" Impact LMI | 18-0201.12 |
| Atlas HP- 9/16" Impact SMI | 18-0201.13 |
| Atlas HP- Non-Impact Insulated | FL 16271.3 |
| Atlas HP- 1/4" Non-Impact | FL 16271.3 |

FRAME SIZES

| | Head | Jamb | Sill |
|---------|--------|---------|--------|
| 2 Track | 3 5/8" | 3 1/16" | 3 1/4" |
| 3Track | 5 1/4" | 4 1/2" | 4 3/4" |
| 4Track | 6 3/4" | 6 1/16" | 6 1/4" |
| 5Track | 8 1/4" | 7 1/2" | 7 3/4" |



Track w/built
in water drain



Dual Lock

GLASS / TINT AND LOW-E COATINGS



Tint:

Grey
Bronze
Solexia Green
Blue / Green
Solar Cool Grey
Solar Cool Bronze
(OTHER TINTS AVAILABLE UPON REQUEST)

Low-E Coatings:

Solarban 60
Solarban 70*
Solarban 90*
Solarban R100

* MEETS FBC REQUIREMENTS FOR SHGC WITH 9/16" GLASS SURFACE #2

TRACK SILL HEIGHTS

| Track/Add-on | Water Pressure |
|-----------------------|--------------------------------------|
| 3/4" Standard | 7.50psf (refer to NOA overhang req.) |
| 3 1/4" (add-on riser) | 9.75psf |
| 2" Hi-rise | 7.50psf |
| 3 1/4" Hi-rise | 9.75psf |
| 5/16" Flat Interior | (No water rating) |

PRODUCT FEATURES

- Aluminum Allure handle (standard), Olympus (optional) or Signature (optional)
- Aluminum Flush handle operated with a single mortise lock (optional)
- Handles are available in variety of painted or metal finishes
- Single Delrin roller encased in aluminum outer housing (non-impact)
- 9/16" laminated to meet Florida Energy Code for SHGC
- Tandem Delrin roller encased in aluminum outer housing (impact)
- Stainless single mortise lock (standard on non-impact)
- Impact insulated for improved SHGC and U-value
- Stainless dual mortise lock (standard on impact)
- Deluxe Box Screen Door with stainless hardware and flush handle
- Maximum panel size 52"x102 1/2" and 48"x120"
- Built in sill track drain system
- Heavy-duty anodized sill track
- Jamb snap covers to conceal anchors
- High performance powder coat and class II Clear Anodized
- Doors are tested and approved under NFRC for energy efficiency



U-Handle



Allure
Handle



Signature
Handle



Flush
Handle





Manufacturers of Custom Sliding Glass Doors

561.746.5493

www.southeasterndoor.com