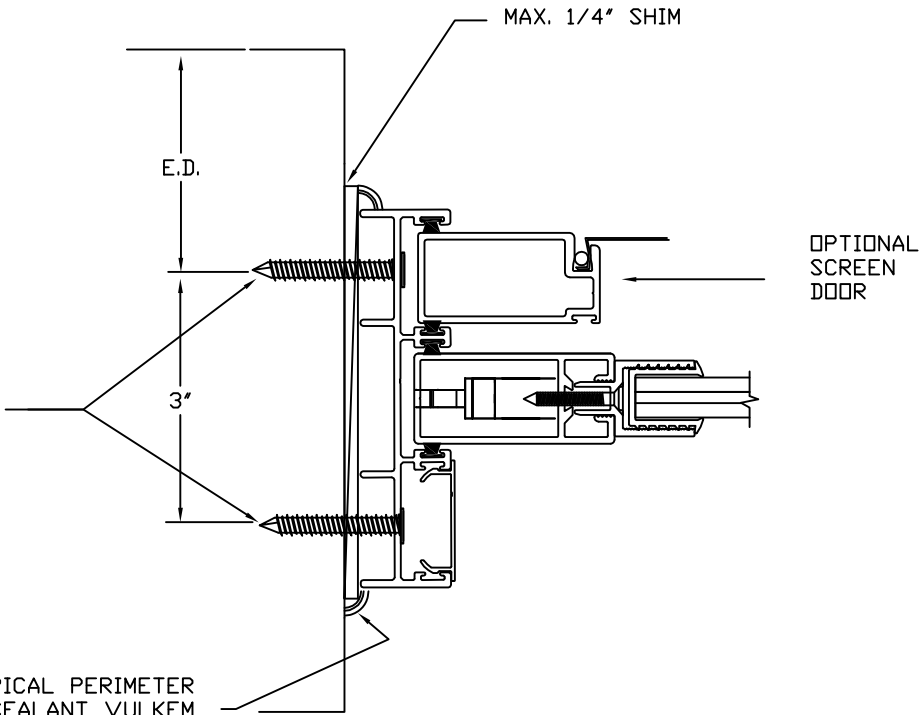


EXTERIOR

TWO ROWS OF ANCHORS TYPE A, B, C
STARTING AT 6" FROM THE ENDS AND
EQUALLY SPACED NOT EXCEEDING 16" OC
(MUST USE #14 FLATHEAD ANCHORS)

TYPICAL PERIMETER
SEALANT VULKEM
116 POLYURETHANE



INTERIOR

ANCHOR TYPES:
 A- 1/4" STAINLESS FH TAPCON BY ITW BUILDEX
 WITH 1 3/4" MIN. EMBED. INTO 3000 psi CONCRETE
 OR BLOCK
 B- 1/4" STAINLESS FH TAPCON BY ITW BUILDEX
 WITH 1 1/4" MIN. EMBED. INTO PT WOOD (SG) = .55)
 C- 1/4-14 SELF DRILLING GRADE 5 SCREWS INTO
 1/8" METAL STRUCTURES

SE SOUTHEASTERN
DOOR COMPANY

Manufacturers of Standard and Custom Sliding Doors
 1505 COMMERCE LANE, P.O. BOX 794
 JUPITER, FLORIDA 33458
 PHONE: (561) 746-5493

DRAWING DESCRIPTION:
 IMPACT JAMB
 CROSS SECTION

DESIGNED BY	DATE	DRAWING No.	REV.
DRAWN BY 8/4/08	DATE		
APPROVED BY	DATE	AUTOCAD FILE NAME NON-IMPACTJAMBDETAIL.DWG	SHEET 1 OF 1